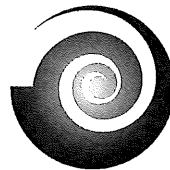
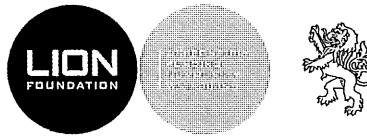




**SQUASH NEW ZEALAND  
2006 Annual Report**

Squash New Zealand wishes to  
acknowledge the following 2006 Sponsors:

**MAJOR SPONSORS**



**ASB Community Trust**

*Te Kaitiaki Putea o Tamaki o Tai Tokerau*

supported by **ASB**



**TRUSTS**

**Perry Foundation**

**Pub Charity**

**South Auckland Charitable Trust**

**The Southern Trust**

**Trillian Trust**

**New Zealand Community Trust**

**Caversham Foundation**

**Scottwood Trust**

**Oxford Sports Trust**

*Front and Back cover images © Steven Line  
2006 Commonwealth Games - Melbourne. New Zealand's  
Sbelly Kitchen on her way to a Bronze medal win over  
current world champion, Malaysia's Nicol David.*



# SQUASH NEW ZEALAND ANNUAL REPORT 2006

## REPORTS

|  |    |
|--|----|
| Squash New Zealand Officials 2005 - 2006           | 2  |
| Squash New Zealand Honours Board 2006              | 4  |
| Chairman's Review                                  | 6  |
| CEO's Report                                       | 8  |
| High Performance Manager's Report                  | 11 |
| National Coach's Report                            | 14 |
| District Development Report                        | 16 |
| Coach Development Report                           | 17 |
| 2006 Season Results                                | 19 |
| Grading and Statistics Report                      | 28 |
| Refereeing Report                                  | 30 |
| Club of the Year - University of Otago Squash Club | 31 |
| Club Kelburn                                       | 32 |
| National Squash Centre                             | 33 |
| Masters Report                                     | 34 |
| 2006 World Junior Mens Championships               | 36 |

## FINANCIALS

|   |    |
|---|----|
| Audit Report                                    | 40 |
| Consolidated Statement of Financial Position    | 41 |
| Consolidated Statement of Financial Performance | 42 |
| Notes to the Financial Accounts                 | 44 |

## MEMBERSHIP RETURNS

|                        |    |
|------------------------|----|
| Northland, Auckland    | 49 |
| Waikato, Bay of Plenty | 50 |
| Eastern, Central       | 51 |
| Wellington             | 52 |
| Canterbury, Midlands   | 53 |
| Otago, Southland       | 54 |

## Squash New Zealand

Office: UNITEC, Gate 3, Carrington Road, Mt Albert, Auckland

Postal: PO Box 21 781, Henderson, Auckland.

Telephone: 64-9 815 0970. Facsimile: 64-9-815 0971

Email: [squashnz@squashnz.co.nz](mailto:squashnz@squashnz.co.nz) Website: [www.squashnz.co.nz](http://www.squashnz.co.nz)



*Hawkes Bay Lawn Tennis & Squash Club F Grade Men - National SuperChamps winners 2006  
L - R, back row; Max Moore, Robin Johnson and Michael Winkey. Front row; Evan Mudgway, Ryan Gittings and Glen Bidlake*



*Pannure B Grade Women - National SuperChamps winners 2006  
Back; Heather Saies, Alison Friery, Sarah Loomb, Paige Benioni. Front; Kaye Hoffman, Ginny Moore.*

## Squash New Zealand Officials 2005-2006

### **PATRON**

Dame Susan Devoy

### **EXECUTIVE COUNCIL**

Gerard DeCourcy (Chairman), Neil McAra, Jim O'Grady, John Sangster, Alastair Snell, Grant Utteridge

### **PROGRAMME DIRECTORS**

Grading & Statistics: Steve Scott; Masters: Judy Cooper; Refereeing: Jan McAra

### **SELECTORS:**

Senior/Junior: Dave Clarke (Convenor), Michel Galloway, Paul Kennett, Nicky Dunlop, Aileen Buscke,  
Masters: Judy Cooper (Convenor), Wayne Seebeck, Sandra Tinkler

### **NATIONAL STATISTICIANS:**

Women: Vivienne Brumby, Men: Willie Bicknell

### **NATIONAL OFFICE**

Chief Executive: Peter Fergusson  
Administration Manager: Vivienne Brumby  
Coach Development Manager: Robbie Wyatt  
High Performance Assistant/Funding: Kerry Torrie  
National Coach: Dave Clarke

High Performance Manager: Brett Reid  
Squash Development Manager: Garry Wood  
Receptionist: Jan Lewis  
Contract Accountant: Hamon & Associates

### **HON.SOLICITOR:**

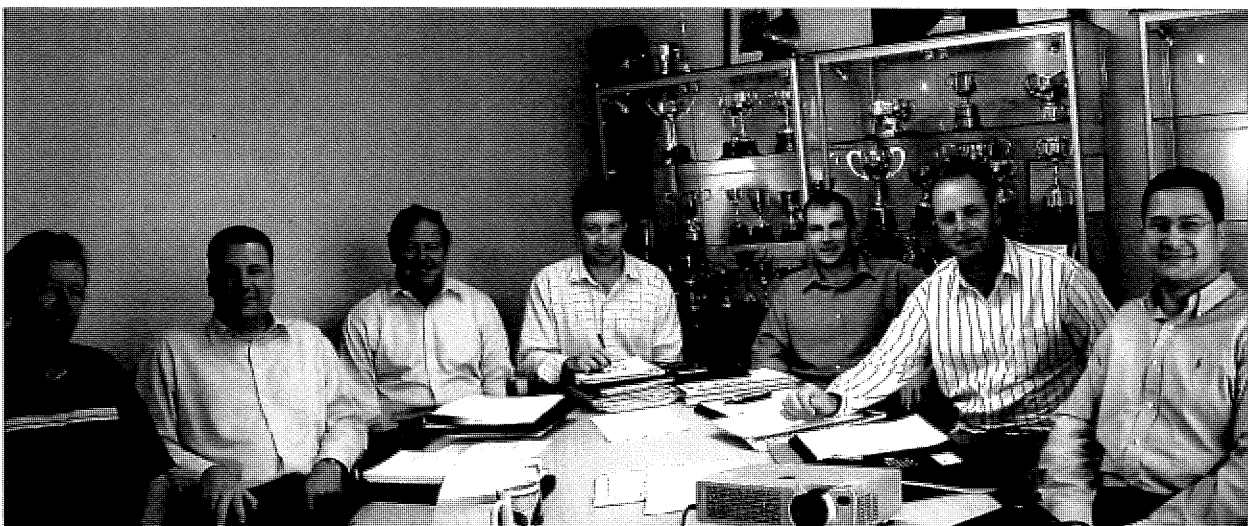
Michael Sumpter

### **AUDITOR**

McGregor, Bailey & Co

### **LIFE MEMBERS**

Neven Barbour, Bryden Clarke, Norman Coe, Murray Day, Dame Susan Devoy, Dardir El Bakary,  
Butch Gifford, Don Green, Bill Murphy, Ross Norman, Susie Simcock, Michael Sumpter



*Squash New Zealand Executive Council; Jim O'Grady, Alastair Snell, John Sangster, Gerard DeCourcy (Chairman), Neil McAra, Grant Utteridge and CEO Peter Fergusson.*

## Squash New Zealand Honours Board 2005-2006

**CLUB OF THE YEAR**

University of Otago Squash Club

**NEW ZEALAND NATIONAL MEN'S SQUASH CHAMPION**

Callum O'Brien Remuera

**NEW ZEALAND NATIONAL WOMEN'S SQUASH CHAMPION**

Shelley Kitchen Browns Bay

**MOST IMPROVED SENIOR PLAYERS**

Female

Joelle King Cambridge

Male

Josh Greenfield Palmerston North

**NEW ZEALAND SENIOR INTER-DISTRICT TEAMS CHAMPIONSHIP**

Women

Auckland

Men

Auckland

**NEW ZEALAND JUNIOR MEN'S SQUASH CHAMPION**

Josh Thom Auckland

**NEW ZEALAND JUNIOR WOMEN'S SQUASH CHAMPION**

Kerry Wickett Auckland

**MOST IMPROVED JUNIOR PLAYERS**

Female

Joelle King Waikato

Male

Evan Williams Wellington

**NEW ZEALAND JUNIOR INTER-DISTRICT TEAMS CHAMPIONSHIP**

Men

Wellington

Women

Auckland

**DEREK COOKE MEMORIAL TROPHY FOR REFEREEING**

Joss Urbahn Palmerston North

**NEW ZEALAND COACH OF THE YEAR**

Tanya Colyer Bay of Plenty

**NEW ZEALAND TEAM COACH OF THE YEAR**

Graham Brownrigg Bay of Plenty

**NEW ZEALAND JUNIOR COACH OF THE YEAR**

Bill Berry

Canterbury

**NEW ZEALAND MASTERS CHAMPIONSHIP**

|     |       |                          |
|-----|-------|--------------------------|
| 35+ | Men   | Willie Bicknell          |
|     | Women | Lisa Cowlard             |
| 40+ | Men   | Danny McQueen            |
|     | Women | Kathryn Austin           |
| 45+ | Men   | Brent Sherman            |
|     | Women | Kay Newman               |
| 50+ | Men   | Brian Barnett            |
|     | Women | Michel Galloway          |
| 55+ | Men   | Richard Purser (55 & 60) |
|     | Women | Francy Stephenson        |
| 60+ | Men   | Richard Purser (55 & 60) |
|     | Women | Kay Glenny               |
| 65+ | Men   | Kelvin Harding           |
| 70+ | Men   | Maurice Peters           |

**NEW ZEALAND MASTERS INTER-DISTRICT  
TEAM CHAMPIONSHIP**

Bay of Plenty

*From the 2006 Prince World Junior Men's Championships hosted in Palmerston North, - World Squash Federation President Jabangir Khan congratulates Individual Champion Egypt's Rany Ashour.*



**Squash New Zealand  
2006 Review & Reports**





## Chairman's Review

High Performance has been a significant focus in 2006. There have been 4 major international events (World Doubles Championships, Commonwealth Games, Junior Men's World Championships and Senior Women's World Championships). New Zealand hosted the World Junior Men's Championships in Palmerston North in July.

Importantly this year involved a review by SPARC of its high performance strategy which has significant funding implications for Squash.

### World Events

The performance of our elite players at the World Doubles Championships and Commonwealth Games was outstanding. New Zealand won 4 medals at the World Doubles Championships. Notably our "young guns" Martin Knight and Campbell Grayson won a bronze medal in the Senior Men's Doubles. This earned them a late place in our Commonwealth Games team.

Considerable emphasis had been placed on preparation for the Commonwealth Games. We expected that performance at the Commonwealth Games would be a significant factor in the SPARC high performance review. Our target was to obtain 2 medals. Shelley Kitchen got us off to a wonderful start winning bronze in the Senior Women's. She defeated the World No. 1, Nicol David from Malaysia in the bronze medal match. This was shown live on New Zealand television.

Our Doubles combinations all performed creditably. Our Senior Women's team of Shelley Kitchen and Tamsyn Leevey won a silver medal. 3 other combinations finished in 4th place. Our targets were reached and squash was one of the few sports to achieve this.

The Commonwealth Games signalled the end of a long and thoroughly planned campaign. Our players did us proud and I offer my congratulations to them.

I must also particularly compliment our National Coach, Dave Clark. We are fortunate to have someone of his calibre within our sport. His level of commitment sets an example in our sport.

Squash Gym in Palmerston North hosted the World Junior Men's Championship in July. The event was a spectacular success. The event immediately followed significant upgrading at the club and it is now one of the best facilities in the country.

The event gave the New Zealand squash public the

opportunity to see world ranked players from other countries and in particular Ramy Ashour (Egypt - World No. 20) who won the event for a second time.

The New Zealand team was young by comparison to our competitors. Most will be available for the next World Junior's in 2 years time. They worked hard and played creditably. Hopefully the players will build on the experience gained.

The New Zealand Women's team played in the World Championships in Edmonton, Canada in September finishing a creditable 5th in a very strong competition.

### SPARC Strategy

When SPARC was formed the board carefully reviewed its strategy. We took the view that "the train was about to leave the station...get on or get left behind".

We got on and thought we had successfully met the expectations of our sport. Between 2002 and 2006 squash has won 15 World Championships and Commonwealth Games medals. Much work has been undertaken to upskill our organisation.

SPARC released its high performance strategy in August 2006. There was a new direction. SPARC's mission now focusses on winning in "...events that matter to New Zealand". In addition to rugby, cricket and netball that involves just 6 sports. It excludes squash and other high profile sports that have enjoyed public support and interest.

Squash is one of 11 sports that are now involved in a contested funding process for a reduced level of financial support. It would be wrong not to record our considerable level of disappointment.

However, that is now the reality of the situation. At the time of writing this report considerable effort was being made to prepare our investment proposal for SPARC. The situation has caused us some considerable uncertainty but we are likely to know the outcome by this year's Annual General Meeting.

### Growth

There are increasing signs that more and more young people are taking up squash. About 900 students took part in the Auckland Secondary Schools competition this year. These competitions are thriving in other centres. 45 teams took part in the National Secondary Schools Finals





2006 New Zealand team medal winners from World Doubles Championships in Melbourne.

Left to Right; Campbell Grayson, Martin Knight, Tamwyn Leevey, Shelley Kitchen, Callum O'Brien, Lara Heta and Louise Crome.

making this competition the biggest squash teams event in the country. Squash New Zealand will strengthen its ties with the secondary schools' organising body.

The numbers entering our Junior tournaments and notably the North and South Island Juniors continue to increase each year.

These are signs that the work undertaken with schools through our development officer network is producing results. It continues to be important to establish a clear link from the schools to our clubs. It is vital that clubs take an active interest in the Junior players and particularly to identify who these players are and include them in the club memberships. We cannot manage what we cannot measure.

Clubs that upgrade their facilities will reap the rewards of doing so. Both Squash Gym Palmerston North and the Christchurch club which hosted this year's Nationals are now outstanding facilities.

The National Squash Centre Trust has purchased an all glass court. This was made possible through the support of the ASB Community Trust and the squash community thanks them for this. This will enable international events to be held at the National Squash Centre but in addition it will provide greater opportunities for the televising of squash and in turn to raise squash's profile.

It was pleasing to see that television cameras were present throughout the Senior National Championships in Christchurch. A one hour highlights package was screened on Television New Zealand in mid September. It was a great advertisement for our sport.

#### Thanks

As I step down from the position of Chairman I wish to offer my thanks to the many committed people within our sport for their support during the last year and my term:

- Firstly our Chief Executive, Peter Fergusson who resigned late this year. He handled a very broad role with considerable skill and has made a significant contribution to Squash in the last 4 years. I have greatly valued his expertise and we wish Peter well with his new venture.
- Our Board who give freely of their time (Jim O'Grady, John Sangster, Neil McAra, Alistair Snell and Grant Utteridge).
- Our National Coach Dave Clarke who has the respect of the entire NZ Squash community as a leading international coach.
- Our High Performance Manager, Brett Reid whose expertise we needed to rely on in handling the issues that arose later in the year for high performance.
- Our Administration staff, Viv Brumby, Kerry Torrie and Jan Lewis. Sport is no 9-5 job.
- Our many "old heads" who continue to show an interest and support for our game but particularly to Neven Barbour and Susie Simcock who don't stop thinking about the game.
- Bruce Davidson and the National Squash Centre Trust perform an important role in managing our National Centre.
- Finally to all the District Presidents, Board Members, Development Officers, Coaches and Club Committees. The future of our sport is very much in your hands and it has been a pleasure working with such a great bunch of people.

#### GERARD DECOURCY

Chairman



## CEO's Report

Once again it has been a tough and busy year – perhaps nothing tougher however than this - my last Report as Chief Executive for Squash New Zealand. There are so many people to thank, proud achievements to recall and so many fantastic memories that are conjured up as I pen this final message.

Some of the more memorable achievements have been produced this year and it has been the challenge of delivering a sizeable number of projects 'on time' and within budget that has been both rewarding and testing of our resources and resolve.

The National Conference and Annual General Meeting will be a time to celebrate many of those achievements – however it is worth mentioning a few key activities and results. They include:

- **Finances** - This year was unusual, in that, we were faced with financing New Zealand teams to four major International events in one financial year – including World Doubles, World Women's Teams, Commonwealth Games and the hosting of the World Junior Men's Championships. This alone stretched administrative, coaching and financial resources.

The ongoing commitment to growth and, particularly, Regional Development (through District grants) has been reflected in increased investment – a commendable achievement in a tough year.

This has required significant focus on managing expenditure and also increasing the levels of income. This focus delivered a 20% lift in overall income levels from the previous year – which has been a key component of delivering a strong 'bottom line' result.

- **High Performance** - The past 12 month period has produced World Championship results that have not been seen in Squash for many years – 4 World medals and 2 Commonwealth Games medals. This was delivered by a dedicated group of elite players and the massive efforts of our Coaches – lead by National Coach Dave Clarke.

The year started with a superbly successful World Doubles Championship campaign - delivering a World Title to Shelley Kitchen and Tamsyn Leevey along with 3 Bronze medal results (to - Campbell Grayson/Martin Knight, Lara Heta/Louise Crome and Lara Heta/Callum O'Brien).

The 2006 Commonwealth Games produced a wonderful

effort by Shelley Kitchen to secure an individual Bronze medal which capped a great event for her personally. Shelley went on to partner Tamsyn Leevey in the Women's Doubles pairing and delivered a further Silver medal also.

While the medals attained were celebrated – it was the performance of the entire team (including National Coach – Dave Clarke and Manager – Wayne Werder) and the 'family' support during this event that was the highlight. Going into the final day of competition the team was 'playing off' for no less than 5 medals in total. While all were disappointed not to turn this opportunity into more medals – the quality of performance and effort of the team to put themselves into medal winning positions was outstanding.

The impact of this group of players and coaches was highlighted at the 2006 New Zealand Academy Gala Awards Dinner where Squash celebrated a 4 year period of, no less than, fifteen (15) world placings.

- **SPARC** - Again we are indebted to SPARC's support through the 2006 year – including their direct financial investment, support of key players, scholarships and business support. At the time of writing this report SPARC's ongoing investment in the key area of High Performance funding remains unknown. This issue has made planning difficult and the budget proposed into 2007 has been developed assuming a reasonable outcome – however contingent budget plans have also been developed to deal with whatever result is finally announced.
- **World Junior Men's Championships** - Hosted by SquashGym Palmerston North – this major International event was professionally delivered, hailed as an outstanding success by World Squash and has placed New Zealand Squash firmly on the International event 'map' once again. While there have been formal functions where the World Junior Championship Event Committee (Chaired by Grant Smith) has been recognised and thanked for their fantastic efforts – it would be an under estimation of our indebtedness to this group not to mention them in this report. A professional group that delivered a benchmark International event – well done.
- **Transportable Championship Glass Court** - Also evident at the World Junior Championships was a fully Transportable Championship Glass Court. This asset was



purchased through the National Squash Centre Trust - with the significant support of ASB Community Trust funding - as a facility to be managed and used by Squash New Zealand. The court will provide an exciting vehicle for potential commercial investment, ongoing promotion and broader viewing of our sport. Recent television coverage and interest in 'airing' our sport has been a 'stepping stone' to lifting public interest and recognition of our 'beloved' game - the use of the glass court will, in future, provide greater opportunity, better viewing and more interest.

- **Technology** - The development of technology as a medium for increased communication, improving access and 'sharing' of best practice tools has continued this year. A growing 'library' of key resources now sits on the Squash New Zealand website for all Districts and Clubs to utilise. At National Conference this year the planning, time lines and project phases for two exciting advances will be presented, discussed and demonstrated - they are:

- **GeoSmart** - technology originally developed for GPS mapping. This tool will be linked directly to our website and provide a street map of every squash club, allowing members (travelling to events) and/or new members (finding the nearest club) to research actual travel detail on line.

- **Grading System Upgrade** - the introduction of web based technology that will produce future 'on line' ability to view playing history, inquire on 'head to head' clashes and view far greater detail relating to event results. The future benefit is the systems capacity to link to tournament software, operate interclub 'on line' and allow alternate options for controlled input of information.

Change is one of the few constant things in life - and the changing technological landscape has the potential to offer many benefits and systems that will ensure that Squash in New Zealand remains at the sporting forefront.

- **Regional Development** - A review of Squash New Zealand's Regional Development strategy produced a 'core goal' measurement system (the Quadrant) designed to provide Districts with measurable targets (in areas critical for the games future growth), a results aligned funding system, autonomy and greater accountability for managing their own resources to 'deliver' in these key areas.

Commitment to the goals and results, unfortunately, appears mixed - this will be a key challenge if Squash wishes to grow - as a base going forward the 'gaps' are now identifiable and easily 'pin pointed' - but will require 'real' commitment to address.

Additionally a detailed Capability Audit of Districts was independently completed by Driving Forces (Chris Ineson). This 'audit' identified the current status of District structures and several recommendations to lift

efficiencies and performance.

- **Clubs** - The heart of our sport remains at Club level - in order for Squash to grow it is the 'sharp end' that ultimately has to 'deliver'. Opening doors, upgrading premises, valuing the sport (not under selling it or the club) and operating activities that make people want to play - remains the, simple but, key factor.
- **Marketing** - A highlight (that is hopefully in constant use throughout Clubs in New Zealand) is the 'Creating the Best Club in the World' promotional pack - sent to every club (both hard copy and electronically). This is a simple and effective 'how to' manual that every club can benefit from. It has incorporated, not only, the imagery produced for all clubs to use but also easy to use ideas and processes to help their club grow.
- **Sponsors and Trusts** - Charitable Trusts continue to provide irreplaceable and considerable support to our sport - not only at National level but throughout the country - and deserve our thanks and support.

Sport is a 'people business' - and that is the key aspect I have enjoyed about my involvement. It is the calibre of people within Squash that sets the sport apart from most others. My heartfelt thanks go to my Squash 'family' - all those that have supported, enthused and 'adopted' me into 'the mix' over the past 4 years (including my family) - I have appreciated this beyond words.

There are too many to identify individually however I would like to acknowledge 'my team' (Staff and Board) - who have been the mainstay 'day in and day out':

- The Team - Vivienne, Brett, Dave, Glen, Garry, Kerry and Jan...definitely part of my extended family...work was the common element however it has been the personal support beyond work that was appreciated most.
- Gerard DeCourcy - deserves my individual mention as he has been an outstanding Chairman, friend, 'sounding board' and support.
- The Squash NZ Board - Neil, John, Grant, Alastair and Jim...much more than just a Board...more than just a group driving the direction of squash...great mentors, great friends and great fun.

Similarly - my sincere thanks to all the District Presidents, Development Officers, Volunteers, Coaches, Selectors, Directors, Referees, Parents and Players that have 'made a difference'.

Kind Regards

**PETER FERGUSON**

**Chief Executive Officer**



*Te Puke F Grade Women's team - National SuperChamps winners 2006*



*Wellington Junior Men's team, 2006 New Zealand Inter - district Junior teams event winners.*



## High Performance Manager's Report

The year since the last High Performance Manager's report has been dominated by two key events. The Commonwealth Games in Melbourne in March, and the release, by SPARC, of its 2006-2012 High Performance Strategy, in September.

The Commonwealth Games outcome for New Zealand is now a matter of record – two medals, target met.

The outcome of the SPARC strategy will not be known, of course, for some time, although Beijing in 2008 will provide some clear indicators of whether the new strategy will deliver the results New Zealanders want.

As I write this, the immediate implications of the strategy for squash also remain unknown – our high performance funding for the next 12 months and beyond is undecided. The uncertainty created by the new investment process makes planning for next year difficult to say the least.

The winds of change swirl about us ...

However, long before meteorological considerations there were the 2006 World Doubles Championships in Melbourne. This event was a lead-up event to the Commonwealth Games and provided players and coaches with a great opportunity to "trial" their Commonwealth Games strategies.

Our return of four medals was fantastic (especially the Gold in the Women's Doubles), even without England present, and as a performance indicator, the World Champs suggested our Games medal target of two medals was achievable.

On to March and the Commonwealth Games – Squash's pinnacle event for the year and certainly our most high profile competition from the media's and, therefore, the public's point of view.

Dave will wax lyrical about the results (and so he should); as the players and coaches did a fantastic job to bring home two medals. However, almost as noteworthy were the 4th place finishes the team achieved (Campbell and Martin, Lara and Louise, Glen and Shelley), which left us wondering what might have been ...

Squash was one of 16 New Zealand sports competing in 20 disciplines in Melbourne, of which nine either achieved (7) or exceeded (2) their medal target (targets were "Not applicable" to 2 sports!).

It is worth mentioning at this point that while both SPARC and the sports overall got their medal predictions wrong for Melbourne (45 predicted by SPARC vs 31 achieved by the sports), compared to Manchester in 2002, the number of athletes and teams securing top 4 finishes in Melbourne increased from 59 to 64 (up 8%), and the number of teams and athletes securing top 5 finishes went from 73 to 84 (up 13%).

In addition, 743 medals were awarded in Melbourne, compared to 898 in Manchester.

These statistics seem to suggest that, overall, the New Zealand team wasn't the failure many "analysts" in the media suggested.

Having said that, some sports clearly under performed, and one of the primary factors associated with under performance was a lack of "the required high-performance culture". In this regard, squash also delivered.

The Games debrief that followed Melbourne indicated that the players, coaches, New Zealand Academy of Sport providers and the NZOC were all satisfied that the organization and culture around the team was of a high standard and contributed to the team's potential to perform to its ability.

Dave Clarke and Wayne Werder can take much of the credit for that.

Having the Games close to home and in similar conditions to New Zealand (climate, time zones, environment) not only reduced the obstacles to be overcome by the team compared with some previous Games venues, but the Melbourne location also afforded four of our high performance coaches the opportunity to observe world class squash via Prime Minister's High Performance Coach Scholarships.

As with our players, it is essential our leading coaches get exposure to top level squash, and SPARC's support of our high performance coaching programme has been greatly appreciated in this regard.

Quite simply, we need more coaches who have observed and understand the modern professional game.

Off court, the 2006 World Junior Men's Championships in Palmerston North presented a number of unique demands associated with being a "home" champs - the players and coaches found themselves the centre of attention from friends, family, and media.



*2006 New Zealand Senior Womens Team to be World Championships in Canada  
From left to right, Joelle King, Shelley Kitchen, Jackie Hawkes, Louise Crome, Dave Clarke (Coach) and Lindsey Walters (Assistant Coach).*

On court, our young team worked hard but struggled against older, stronger players who were more experienced. A learning experience for everyone.

I want to acknowledge once more the efforts of Grant Smith and his team at Central Squash in bringing the World Champs to New Zealand, and letting us see first-hand how high the standard at world juniors champs is.

In September, Dave Clarke (Head Coach), Lindsey Walters (Assistant Coach), Shelley Kitchen, Louise Crome, Jackie Hawkes and Joelle King headed to Canada to compete in the 2006 World Women's Teams Championships.

After New Zealand's superb 3rd placing two years earlier in Amsterdam, the 2006 team had a tough act to follow. Unfortunately, the luck of the draw went against them when they drew England in the quarter-finals. From there it was an excellent effort to finish 5th.

It is worth noting that, at 17, Joelle King's selection for the team made her one of squash's youngest senior representatives.

#### **New Zealand Academy of Sport**

A less visible part of the high performance programme, the sport medicine, sport science, and ACE providers from

NZAS give of themselves, their time, and their expertise well beyond the cause.

We are very fortunate to have a strong and committed team, so many thanks to Graeme, Jamie, Lisa, Kelly, Christine, Ralph, Gaye, and Dan for their efforts over the past 12 months.

#### **Last words ...**

In a year that started so positively for squash, it is disappointing to know that, as I write, our results have not secured any future high performance funding from SPARC for 2007 and beyond. However, that is the environment we work in, and like the players and coaches, we need to adapt to survive.

We must simply "get on with it", be smart, and focus on building the best future we can given the resources we have available to us.

**BRETT REID**

**High Performance Manager**

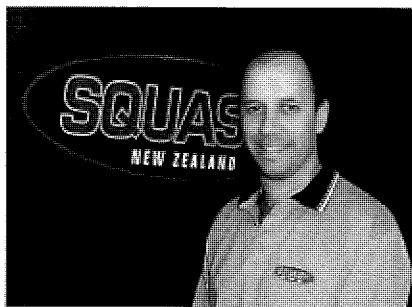


*Auckland Junior Women's team, 2006 New Zealand Inter - district teams event winners.*



*Squash Gym Palmerston North C Grade - National SuperChamps winners 2006*

*>From left; Joseph Watts, Matt Pickering, John Fletcher, Korey Skipper, Jon Phillips, Aaron Ramon, Marius Fourie. Absent; Grant Watts, Coach.*



## National Coach's Report

The 2006 high performance year has been a blur this year with several major events taking place in quick succession with the main focus being the Commonwealth Games. We also had the Men's World Team Championships, World Doubles, World Juniors in New Zealand and the World Women's Champs recently in Canada.

The year has been very successful in lots of ways but has also been punctuated with some near misses which could have really made an impact for the game.

In Pakistan the youngest side to represent New Zealand for some years improved two places to finish 15th. Although this was a better finish than we had in the previous four years we had a match ball against Germany who went on to finish in the top 10. It just goes to show the difference that one point can make in these situations.

This scenario was turned around at the World Doubles in Australia the pre cursor event to the Commonwealth Games in March. We won some very big points in difficult situations with the team performing extremely well coming back with four medals. Outstanding efforts by Martin Knight and Campbell Grayson won them an unexpected medal against top international opposition. Shelley and Tamsyn returned with the gold in the ladies event making them the current World Champions.

We were then onto the Commonwealth Games which would be a tougher proposition but we knew we would be competitive against much higher ranked players based on earlier performances.. The team performed extremely well across the board with Shelley giving stand out performances in the individual event beating the number seven, five and one in the world to win a bronze medal. She also went on to claim silver in the ladies doubles with Tamsyn Leevey giving NZ two medals reaching our Games target. We had the one that got away in the mixed with Glen and Shelley having match ball for a gold / silver before going down in five. Lara and Louise finished fourth in the ladies doubles after some great efforts beating the seventh and ninth in the world along the way. Callum and Lara went down in the quarters after knocking out the 9th and 12th in the world partnership, before eventually going down to the Aussie medal pair, but not without a fight. The upset for the games surely came in the mens doubles where Martin Knight and Campbell Grayson played out of their tree, coming through a tough pool then beating World No

3 James Wilstrop and his partner, British Open champion Nick Matthew in a monumental match making the semi finals. They eventually finished a creditable fourth against top quality opposition although you would never believe it if you listened to the NZ media. The one disappointment around the games was the negativity of the NZ media and their lack of sporting knowledge along with their inability to research a story properly.

In summary we prepared well and performed well with two medals and three fourth placings I could not have asked more from the team in their efforts.

Palmerston North hosted the World Juniors 2006. The feedback around the world was very positive and Palmerston North should be congratulated on their efforts around the event. The NZ team this time was a very young side fielding Chris Lloyd 18, Josh Thom 17, Evan Williams 16 and Lui Syder 15. This proved to be significant as the physical strength and maturity of the opposition was to tell in some of the matches. The team was competitive in every match taking ties and games and footing things on an even par on the squash front. The physical strength told in the later stages of the matches with NZ missing out at the death, but not for the want of trying. Although they finished in 15th position the team came close when playing Malaysia who was 3rd with signs that some of the younger players will be very competitive in the future, with four players eligible in 2010 finishing in the top 64. It was a good learning experience for those who participated and great to see NZ hosting World Events again.

The World Women's Championships saw a very different event in Canada and some major upsets. We were seeded sixth for the event which looked to be the closest for several years with teams from 3 to 15 appearing to be very tight on paper. This proved to be the case with some close and exciting matches. In the group stage we beat Japan and the USA but lost out to No 3 seeds Malaysia in a very close match 2 - 1. We then drew England in the quarter finals going down 2/0 before beating Ireland and South Africa to take 5th place. Bearing in mind that we have lost the likes of Leilani Rorani, Carol Owens, Tamsyn Leevey and Lara Heta over the past couple of years this was a creditable performance. Spare a thought for Australia and Canada who finished 10th and 13th respectively.

The Districts have been very busy on the junior front with some having some excellent junior programmes



underway with District coaches in place driving them. This has resulted in some good entries to the major junior events where balloting out has had to occur in an effort to fit all the matches in. Saying that, there is still some way to go if we are to compete consistently well on the World Stage. We have some good young juniors that are coming through - as Parents, Districts and the National Body we must continue to try to provide opportunity and support for the youngsters. The players themselves also need to make the commitment to the task and be disciplined in achieving their goals.

We will shortly be coming into a new climate of sport funding that is potentially unhelpful to our sport, SPARC in their wisdom have produced a new criteria for investment that will see many new challenges ahead. The carding criteria for athletes will see them having to achieve a medal at Senior World Championships or Commonwealth Games in the next four years to obtain Academy of Sport support. This will put extra strain on our resources and our endeavours. This may in the future mean that some plans will need to be streamlined and resources more directly targeted, we will know more post November 2006.

The selectors have done another great job this year, thanks to Aileen Buscke, Nicky Dunlop, Michelle Galloway and new boy Paul Kennett for their insight, thoughts and time over 2005/2006.

The High Performance Coaches have done some great work with the players and have put a huge amount of time and enthusiasm into their work. Thanks go to Robbie Wyatt, Julie Hawkes, Lindsey Walters, Carol Owens, Jenny Bell, Nick Mita, Mike Allred, Paul Tuffin, Tanya Colyer, Graham Randolph, Ossie Osbourne, Willie Bicknell, Edmund Bradford, Steve Parr and many other coaches who have contributed to the programme.

The future looks very bright with some talented juniors and excellent seniors coming through. We will have seven professional players based overseas in late 2006 and early 2007 who will be honing their skills and getting the exposure that they need to move them through to the next level. This will make us more competitive again on the World stage, offering opportunity to young players and allowing them to mix with the best in the world.

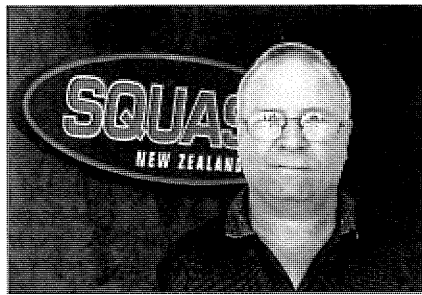
My final thought is one that in a world where social change appears not to hold old values such as respect and discipline with the same esteem as our forefathers. It is important to remember that we must instill these traits in our young charges if they are to succeed in the World arena. Only then will they be able to compete at the highest levels and have the level of commitment required to win consistently.

**DAVE CLARKE**

**National Coach**



*From left Bill Berry being presented with the New Zealand Club Coach of the Year trophy.*



## District Development Report

2006 saw a major way in which the Districts were funded in relation to the grant from Squash New Zealand for district growth strategies. From funding individual development officers roles SNZ devolved much of the responsibility for local programmes back to each District Board.

In return for funding from Squash New Zealand each District was obligated to furnish an annual report to Squash New Zealand on key development targets that are set and agreed on between each District and Squash New Zealand. Growth and development has always been difficult to quantify accurately so this last year has seen the introduction of a new report template for both annual and monthly targets. The concept is that by the Districts setting targets based on the main growth reporting accountabilities the process will enable them to see what is important and focus on doing the stuff that will make a difference. To achieve the targets the District Executives and staff will have to implement a planning rationale for its annual operations. This will enable each District to learn, understand and manage its business better.

There have been a number of changes with the Development Officers network. I would like to welcome Brian Barnett to Auckland and Dave Christie to Wellington. Mike Corbett departed to the New Zealand Knights and John Rowell has left after the role in Waikato has altered significantly after

a review. I would like to thank Mike and John for their contributions to the development of squash in their respective districts and wish them both well in what ever they decide to do.

At the mid year conference held in Palmerston North the main presentation was on superior customer service. The reality is that the clubs are the main clientele of the various Districts and we need to be aware of how to service the needs of those clubs. Professor Andy Martin from Massey University provided the group with some insightful information on how to view and improve the relationship among the clubs and Development Officers.

The highlight of the conference was the opportunity to watch a world class event in our own country. The standard of the squash was top quality and showed the standard our young players must aspire to if they want a place on the international scene.

Finally I would like to thank all the SDO's for the time and effort that they put into their work during the year. It can be onerous and frustrating at times but they all helped to make a difference to the successes of Squash in 2006

**GARY WOOD**

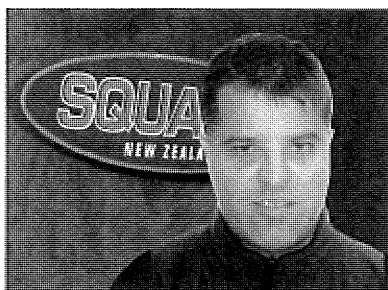
**District Development Manager**



*Whakatane D Grade Women - National SuperChamps winners 2006*

*Back Row; PJ Harawera (coach) Karen Hunter (manager), Raina Hiki, Jen Dunstan, Andrew Anderson (coach).*

*Front Row; Shirley Ratahi, Ally Scott, Korina Broadmore, Kelly Eastwood.*



## Coach Development Report

### District Visits

With my appointment as a Coach Development Manager this has enabled me to visit the districts this year and have contact with our coaches in their districts.

By visiting the districts it has given me an insight of the coaching programmes which are being delivered and the construction of the coaching network. Whilst some districts continue to do well, others are still struggling with resources. One of my main visions in the Coach Development Managers role is to create a professional environment in New Zealand coaching and it is encouraging that some districts are striving towards creating full-time employment for district coaches. This year I have been in contact with the District coaches regularly and ensuring their coaching structures are in place and providing any support necessary. It is pleasing to see District coaches are mirroring the New Zealand Coaching structure.

### District Coach

The District Coach is vital to the progression of Squash in New Zealand. As long as districts identify and understand the value of the squash coach, our development of coaches will continue to advance which will have a positive effect in districts and their coaching structures and pathways. Continuing to up skill our coaches is an absolute must. If we want world champions again highly skilled coaches in New Zealand will play a big part in helping advance our high performance athletes to top international standards.

From my point of view if districts do not choose to employ full-time District Coaches, coaching structures, coach support, junior and senior programmes, will not advance. I am able to provide a generic job description for a district coach position which some districts have used when looking to employ a District Coach.

### Level One Tutors

There has been an increase in accredited National Level One Tutors this year from four to seven. Ultimately I would like to have a Level One tutor in all districts by the end of 2007, hopefully a goal that can be achieved. Our tutors who have delivered the Level One Course have all received positive feedback from around the country from the Level One participants. In the New Year Squash New Zealand will be reviewing all modules of the Level

One Manual ensuring that they are in line with present day thinking.

Level One Coaching database and increase in accredited coaches

Some districts this year have reviewed their Level One and Two coaches' database. They have highlighted those who are incomplete and made contact with them to ascertain whether they are interested in finishing the course. So far this year six Level One courses have been held around the country with at least a couple more in the pipeline. We have 28 new Level One coaches so far this year but expect by the end of the year for that number to be at least 50 plus. Our district coaches need to be in communication with new Level One coaches and where possible try to involve these coaches in club programmes with a view to advancing them into district programmes.

### Coaches Meets

In May of this year we held a very successful National coaches' meet. Sixteen coaches were in attendance covering all the districts. The quality of the coaches was very much high performance which meant that a lot of the topics covered were advanced sessions. The meet was held over three days and covered areas like advanced pressure sessions, matchplay analysis, deception, error detection, fitness planning with Jamie Denton from the Academy of Sport and the list goes on. Looking into the future the coaches meets will be for the District Coach only to attend and Squash New Zealand high performance coaches also. I believe that part of a District Coach's role is to pass on to the zone coaches or assistant District coaches and club coaches information gathered at the National Coach meets at district clinics.

At the next National coaches meet in December we are planning a changed format. In conjunction with the World Junior Elite selection camp I'm also holding the coaches meet where the District coaches will be involved in on court coaching as well as interaction in parents clinics, fitness testing etc. Also at some stage over the few days I would like to take the coaches and parents on a short tour of the Millennium Institute of sport and health to see how a world class sports training destination operates. A large amount of planning needs to take place before December and if this format is a success I will look to use this for the future selection camps.



*Palmerston North's Joss Urbahn, 2006 recipient of the Derek Cook Memorial Cup for services to refereeing.*

In my role as Coach Development Manager this year I feel I've learnt an enormous amount about this role and I am looking forward to continuing this next year. My involvement with the coaches and development officers has been rewarding and challenging and I would like to thank them and look forward to working with everybody again next year.

**ROB WYATT**

**Squash New Zealand  
Coach Development Manager**

**District**

- Northland
- Auckland
- Waikato
- Bay of Plenty
- Eastern
- Central
- Wellington
- Canterbury
- Midlands
- Otago
- Southland

**District Coaches**

- Brian Barnett
- Jenny Bell
- Graeme Randolph
- Jan Prieditis
- Paul Tuffin
- Ossie Osbourne
- Mike Allred
- Nick Mita
- Mark Gribben
- Lindsey Walters



*Auckland Men's and Women's Senior teams, 2006 New Zealand Inter - district teams event winners.*



## 2006 Season Results

---

### NEW ZEALAND INTERNATIONAL SERIES

#### EVENT 1: WHAKATANE OPEN - 10 – 13 AUGUST, PSA

##### Final

|                        |      |                         |     |
|------------------------|------|-------------------------|-----|
| Kashif Shuja (Remuera) | beat | Jason Mudge (Australia) | 3/2 |
|------------------------|------|-------------------------|-----|

---

#### EVENT 2: AUCKLAND OPEN - 15 – 20 AUGUST, PSA/WISPA

##### Final

|                              |      |                         |     |
|------------------------------|------|-------------------------|-----|
| Jonathan Kemp (England)      | beat | Mike Corren (Australia) | 3/0 |
| Shelley Kitchen (Browns Bay) | beat | Jaclyn Hawkes (Otago)   | 3/0 |

---

#### EVENT 3: CENTRAL OPEN - KAWAROA PARK, 24 – 27 AUGUST PSA/WISPA

##### Final

|                         |      |                              |     |
|-------------------------|------|------------------------------|-----|
| Kashif Shuja (Remuera)  | beat | Campbell Grayson (Titirangi) | 3/2 |
| Kasey Brown (Australia) | beat | Jaclyn Hawkes (Otago)        | 3/1 |

---

#### SOUTH ISLAND CHAMPS - INVERCARGILL, 25 – 28 MAY

##### Final

|                              |      |                                     |     |
|------------------------------|------|-------------------------------------|-----|
| Oliver Johnston (Logan Park) | beat | Simon Flett (Central Southland)     | 3/0 |
| Alana Sincock (Roxburgh)     | beat | Maria Smith (Christchurch Football) | 3/0 |

---

#### NORTH ISLAND CHAMPS/SQUASH EASTERN OPEN - HAWKES BAY, 23 – 25 JUNE

##### Final

|                                |      |                              |     |
|--------------------------------|------|------------------------------|-----|
| Paul Tuffin (Palmerston North) | beat | Shelley Kitchen (Browns Bay) | 3/0 |
| Shelley Kitchen (Browns Bay)   | beat | Avon Moleta (Gisborne)       | 3/0 |

---

#### NATIONAL CHAMPIONSHIPS - CHRISTCHURCH, 2-4 SEPTEMBER

##### Final

|                              |      |                        |     |
|------------------------------|------|------------------------|-----|
| Callum O'Brien (Remuera)     | beat | Kashif Shuja (Remuera) | 3/1 |
| Shelley Kitchen (Browns Bay) | beat | Jaclyn Hawkes (Otago)  | 3/0 |

|                          |                                    |                         |
|--------------------------|------------------------------------|-------------------------|
| Most Improved Male       | Josh Greenfield (Palmerston North) | Vogel Rosebowl          |
| Most Improved Female     | Joelle King (Hamilton)             | Aust. Womens Plate      |
| Services to Refereeing   | Joss Urbahn (Palmerston North)     | Derek Cook Memorial Cup |
| Coach of the Year        | Tanya Colyer (Taupo)               |                         |
| Junior Coach of the Year | Bill Berry (Malvern)               |                         |
| Team Coach of the Year   | Graham Brownrigg (Geyser City)     |                         |

---

**SENIOR INTER-DISTRICT TEAMS EVENT - AUCKLAND, 5-6 SEPTEMBER**
**Men**

1. Auckland
2. Central
3. Wellington
4. Canterbury
5. Waikato
6. Bay of Plenty
7. Southern
8. Canterbury Invitation

**Women**

1. Auckland
  2. Waikato
  3. Central
  4. Bay of Plenty
  5. Canterbury
  6. Southern
  7. Northland
  8. Wellington
- 

**NEW ZEALAND JUNIOR OPEN - PANMURE, 14-17 APRIL**
**Final**

|                          |      |                        |     |
|--------------------------|------|------------------------|-----|
| Evan Williams (Tawa)     | beat | Chris Lloyd (Hamilton) | 3/2 |
| Kerry Wickett (Papakura) | beat | Joelle King (Hamilton) | 3/2 |

---

**SOUTH ISLAND JUNIOR AGE GROUPS - SQUASHWAYS, CHRISTCHURCH, 2 - 4 JULY**
**Under 19 Final**

|                                  |      |                                     |     |
|----------------------------------|------|-------------------------------------|-----|
| Bastian Meulenvelt (Netherlands) | beat | Sander Kock (Netherlands)           | 3/0 |
| Rebecca Jones (Australia)        | beat | Maria Smith (Christchurch Football) | 3/0 |

**Under 17 Final**

|                                     |      |                             |     |
|-------------------------------------|------|-----------------------------|-----|
| Elliott Geddes (Australia)          | beat | Peter Sullivan (Eden Epsom) | 3/2 |
| Milou van der Heijden (Netherlands) | beat | Alana Sincock (Otago)       | 3/2 |

**Under 15 Final**

|                           |      |                                 |     |
|---------------------------|------|---------------------------------|-----|
| Bryce Redman (Hawkes Bay) | beat | Liam O'Shaughnessy (Hawkes Bay) | 3/0 |
| Crystal Tahata (Manurewa) | beat | Sacha Pou-Tito (Mangakahia)     | 3/0 |

**Under 13**

|                          |      |  |     |
|--------------------------|------|--|-----|
| Todd Redman (Hawkes Bay) | beat | Browning Platt (USA)                   | 3/0 |
| Ella Dromgool (Burnside) | beat | Matalaoa Taito (Christchurch Football) | 3/0 |

**Under 11**

|                           |      |                                       |     |
|---------------------------|------|---------------------------------------|-----|
| Chris Collins (Nelson)    | beat | Chas Craig (Marlborough)              | 3/2 |
| Abbie Palmer (Mangakahia) | beat | Joely Bennett (Christchurch Football) | 3/0 |

---

**NORTH ISLAND JUNIOR AGE GROUPS - TAURANGA, 7 - 9 JULY**
**Under 19 Final**

|                        |      |                          |     |
|------------------------|------|--------------------------|-----|
| Evan Williams (Tawa)   | beat | Josh Thom (Panmure)      | 3/2 |
| Joelle King (Hamilton) | beat | Kerry Wickett (Papakura) | 3/0 |

**Under 17 Final**

|                                     |      |                          |     |
|-------------------------------------|------|--------------------------|-----|
| Simon O'Shaughnessy (Hawkes Bay)    | beat | Alex Grayson (Titirangi) | 3/1 |
| Milou van der Heijden (Netherlands) | beat | Lana Harrison (Papakura) | 3/0 |

**Under 15 Final**

|                           |      |                             |     |
|---------------------------|------|-----------------------------|-----|
| Bryce Redman (Hawkes Bay) | beat | Byron Peehi-Floyd (Remuera) | 3/2 |
| Emma Millar (Kapiti)      | beat | Crystal Tahata (Manurewa)   | 3/2 |

**Under 13 Final**

|                          |      |                                 |     |
|--------------------------|------|---------------------------------|-----|
| Todd Redman (Hawkes Bay) | beat | Liam Fitzsimons (Gisborne)      | 3/0 |
| Ella Dromgool (Burnside) | beat | Rebecca Barnett (Mitchell Park) | 3/0 |

**Under 11 Final**

|                                |      |                                       |     |
|--------------------------------|------|---------------------------------------|-----|
| Scott Galloway (Mitchell Park) | beat | Nathan Brocks (Gore T&C)              | 3/1 |
| Abbie Palmer (Mangakahia)      | beat | Joely Bennett (Christchurch Football) | 3/0 |




---

**NZ NATIONAL AGE GROUPS - REMUERA, 29 SEPTEMBER - 2 OCTOBER**
**Under 19 Final**

|                          |      |                                     |     |
|--------------------------|------|-------------------------------------|-----|
| Josh Thom (Panmure)      | beat | Evan Williams (Tawa)                | 3/1 |
| Kerry Wickett (Papakura) | beat | Maria Smith (Christchurch Football) | 3/0 |

**Under 17 Final**

|                          |      |                              |     |
|--------------------------|------|------------------------------|-----|
| Lui Syder (Eden Epsom)   | beat | Keegan Burkhart (Collegians) | 3/2 |
| Lana Harrison (Papakura) | beat | Amanda Cranston (Ohakune)    | 3/2 |

**Under 15 Final**

|                           |      |                          |     |
|---------------------------|------|--------------------------|-----|
| Lance Beddoes (Henderson) | beat | Tate Matson (Mangakahia) | 3/1 |
| Crystal Tahata (Manurewa) | beat | Emma Millar (Kapiti)     | 3/2 |

**Under 13 Final**

|                                 |      |                          |     |
|---------------------------------|------|--------------------------|-----|
| Todd Redman (Hawkes Bay)        | beat | Jason Todd (Cambridge)   | 3/1 |
| Rebecca Barnett (Mitchell Park) | beat | Ella Dromgool (Burnside) | 3/0 |

**Under 11 Final**

|                           |      |                             |             |
|---------------------------|------|-----------------------------|-------------|
| Chris Collins (Nelson)    | beat | Nathan Brocks (Gore T & C)  | 3/0         |
| Abbie Palmer (Mangakahia) | beat | Jacinta Matson (Mangakahia) | Round Robin |

|                             |                        |                          |
|-----------------------------|------------------------|--------------------------|
| Most Improved Junior Male   | Evan Williams (Tawa)   | Junior Management Trophy |
| Most Improved Junior Female | Joelle King (Hamilton) | Junior Management Trophy |
| Best District Overall       | Auckland               | Gifford Trophy           |

---

**JUNIOR INTER-DISTRICT TEAMS EVENT - REMUERA, 3 - 5 OCTOBER****Boys**

- Wellington
- Waikato
- Auckland
- Canterbury
- Central
- Southern
- Eastern
- Bay of Plenty
- Northland
- Midlands

**Girls**

- Auckland
  - Wellington
  - Southern
  - Central
  - Bay of Plenty
  - Canterbury
  - Waikato
  - Northland
- 

**NZ SECONDARY SCHOOLS CHAMPIONSHIPS - WELLINGTON, 10 - 13 AUGUST****Finals**

|                                       |   |
|---------------------------------------|---|
| Winner - Auckland Grammar Boys        | Runner up - Mt Albu Grammar Boys            |
| Winner - St Cuthberts's College Girls | Runner up - Central Southland College Girls |

---

**MITCHELL CUP/COUSINS SHIELD**

|                           |      |                  |                          |
|---------------------------|------|------------------|--------------------------|
| Cousins Shield - Thorndon | beat | Palmerston North | Venue - Palmerston North |
| Mitchell Cup - Remuera    | beat | Pamerston North  |                          |

### SUPERCHAMPS TEAMS EVENT FINALS

| Men     |                  | Women      |               |
|---------|------------------|------------|---------------|
| B Grade | Mitchell Park    | Panmure    | Hawkes Bay SC |
| C Grade | Palmerston North | Eden Epsom | Alexandra     |
| D Grade | North Shore      | Whakatane  | Whangarei     |
| E Grade | Waimea           | Kamo       | Hamilton      |
| F Grade | Hawkes Bay LT    | Te Puke    | Wanganui      |

### MASTERS NATIONAL CHAMPIONSHIPS - GEYSER CITY, 20 - 26 OCTOBER

|     |       |                          |
|-----|-------|--------------------------|
| 35+ | Men   | Willie Bicknell          |
|     | Women | Lisa Cowlard             |
| 40+ | Men   | Danny McQueen            |
|     | Women | Kathryn Austin           |
| 45+ | Men   | Brent Sherman            |
|     | Women | Kay Newman               |
| 50+ | Men   | Brian Barnett            |
|     | Women | Michel Galloway          |
| 55+ | Men   | Richard Purser (55 & 60) |
|     | Women | Francy Stephenson        |
| 60+ | Men   | Richard Purser (55 & 60) |
|     | Women | Kay Glenny               |
| 65+ | Men   | Kelvin Harding           |
| 70+ | Men   | Maurice Peters           |

### MASTERS INTER-DISTRICT TEAMS EVENT – GEYSER CITY - 26 OCTOBER

1. Bay of Plenty
2. Canterbury
3. Auckland
4. Waikato
5. Central Districts
6. Wellington

### WORLD SENIOR MEN'S CHAMPIONSHIPS, ISLAMABAD, PAKISTAN 8 – 15 DECEMBER 2005

#### Teams Results

#### Pool Play

##### New Zealand 1 - Germany 2

Campbell Grayson lost to Simon Beker 6/9 8/10 9/6 5/9  
 Kashif Shuja lost to Stefan Liefels 9/10 10/8 9/5 8/10 3/9  
 Callum O'Brien beat Simon Rosner 6/9 9/6 7/9 9/7

#### Pool Play

##### New Zealand 0 - Egypt 3

Martin knight lost to Wael El Hindi 2/9 2/9 1/9  
 Kashif Shuja lost to Amr Shabana 4/9 2/9 1/9  
 Callum O'Brien lost to Karim Darwish 1/9 0/9 0/9

#### 13th - 16th Playoff

##### New Zealand 1 - USA 2

Callum O'Brien lost to Julian Illingworth 2/9 9/4 6/9 2/9  
 Kashif Shuja lost to Preston Quick 9/4 4/9 9/6 10/8  
 Campbell Grayson beat Chris Gordon 9/6 9/1

##### New Zealand 3 - Iran 0

Kashif Shuja beat Majid Rohani 9/0 9/0 9/0  
 Martin Knight beat Mahamad Hassan 9/1 9/0 9/0  
 Campbell Grayson beat Poya Ahmad Abadi 9/1 9/0 9/0

#### 13th - 22nd Playoff

##### New Zealand 2 - Spain 1

Kashif Shuja lost to Borja Golan 3/9 5/9 9/10  
 Campbell Grayson beat Alejandro Garbi 9/6 9/4 3/9 9/3  
 Callum O'Brien beat Vidal Villamide 9/3 9/3 9/3

#### 11th - 16th Playoff

##### New Zealand finished 15th

##### New Zealand 2 - Kuwait 1

Callum O'Brien lost to Abdullah Al Mezayan 4/9 8/10 0/9  
 Martin Knight beat Nasser Ramzy 9/1 9/2 9/6  
 Campbell Grayson beat Bader Al Hussaini 9/0 10/9 9/1



**WORLD DOUBLES, MELBOURNE, AUSTRALIA 10-13 JANUARY 2006**
**Mixed Doubles**
**Pool Play**

|                             |      |  |       |
|-----------------------------|------|--|-------|
| Shelley Kitchen/Glen Wilson | beat | Tanya Owens/ Steve Richardson (Ireland)  | 3 - 0 |
| Shelley Kitchen/Glen Wilson | beat | Louisa Hall/Michael Puertas (USA)        | 3 - 0 |
| Shelley Kitchen/Glen Wilson | beat | Kasey Brown/Paul Price (Australia)       | 3 - 1 |
| Lara Heta/Callum O'Brien    | beat | Meredith Quick/Jamie Crombie (USA)       | 3 - 0 |
| Lara Heta/Callum O'Brien    | beat | Amanda Hopps/Timothy Manning (Australia) | 3 - 0 |
| Lara Heta/Callum O'Brien    | beat | Melissa Martin/Dan Jenson (Australia)    | 3 - 1 |

**Quarter Finals**

|                             |      |   |       |
|-----------------------------|------|---|-------|
| Shelley Kitchen/Glen Wilson | beat | Dianne Desira/Cameron White (Australia) | 3 - 0 |
| Lara Heta/Callum O'Brien    | beat | Kasey Brown/Paul Price (Australia)      | 3 - 1 |

**Semi Final**

|                                  |         |   |       |
|----------------------------------|---------|---|-------|
| Shelley Kitchen/ Daniel Sharplin | lost to | Amelia Pittock/Cameron Pilley (Australia) | 2 - 3 |
| Lara Heta/Callum O'Brien         | lost to | Rachael Grinham/Joseph Kneipp (Australia) | 0 - 3 |

**Bronze Medal Playoff**

|                          |      |                                  |            |
|--------------------------|------|----------------------------------|------------|
| Lara Heta/Callum O'Brien | beat | Shelley Kitchen/ Daniel Sharplin | by default |
|--------------------------|------|----------------------------------|------------|

**Women's Doubles**
**Pool Play**

|                               |      |  |       |
|-------------------------------|------|--|-------|
| Shelley Kitchen/Tamsyn Leevey | beat | Peta Hughes/Rachel Smith (Australia)       | 3 - 1 |
| Shelley Kitchen/Tamsyn Leevey | beat | Lisa Camilleri/Kelly Fowler (Australia)    | 3 - 1 |
| Shelley Kitchen/Tamsyn Leevey | beat | Louisa Hall/Meredith Quick (USA)           | 3 - 0 |
| Louise Crome/Lara Heta        | beat | Kylie Doherty/Georgina Davis (Australia)   | 3 - 0 |
| Louise Crome/Lara Heta        | beat | Sarah Fitz-Gerald/Robyn Cooper (Australia) | 3 - 0 |
| Louise Crome/Lara Heta        | beat | Kimberley Bessell/Skye Millar (Australia)  | 3 - 0 |

**Quarter Finals**

|                               |      |   |       |
|-------------------------------|------|---|-------|
| Shelley Kitchen/Tamsyn Leevey | beat | Kasey Brown/Dianne Desira (Australia)   | 3 - 2 |
| Louise Crome/Lara Heta        | beat | Dianna Argyle/Tenille Swartz (S Africa) | 3 - 1 |

**Semi Final**

|                               |      |                        |       |
|-------------------------------|------|------------------------|-------|
| Shelley Kitchen/Tamsyn Leevey | beat | Louise Crome/Lara Heta | 3 - 2 |
|-------------------------------|------|------------------------|-------|

**Bronze Medal Playoff**

|                        |      |  |       |
|------------------------|------|--|-------|
| Louise Crome/Lara Heta | beat | Rachael Grinham/Amanda Hopps (Australia) | 3 - 2 |
|------------------------|------|--|-------|

**Final**

|                               |      |  |       |
|-------------------------------|------|--|-------|
| Shelley Kitchen/Tamsyn Leevey | beat | Robyn Cooper/Sarah Fitz-Gerald (Australia) | 3 - 0 |
|-------------------------------|------|--|-------|

**Men's Doubles**
**Pool Play**

|                                |         |   |       |
|--------------------------------|---------|---|-------|
| Kashif Shuja/Daniel Sharplin   | beat    | Craig van der Wath/Clinton Leeuw (S Africa) | 3 - 0 |
| Kashif Shuja/Daniel Sharplin   | lost to | Cameron White/Cameron Pilley (Australia)    | 0 - 3 |
| Kashif Shuja/Daniel Sharplin   | beat    | Neil Nesbit/Mike Burns (Zimbabwe)           | 3 - 0 |
| Campbell Grayson/Martin Knight | beat    | Timothy Manning/Paul Price (Australia)      | 3 - 2 |
| Campbell Grayson/Martin Knight | beat    | Craig Rowland/Bradley Freeme (Australia)    | 3 - 0 |
| Campbell Grayson/Martin Knight | beat    | Ritwik Bhattacharya/Saurav Ghosal (India)   | 3 - 0 |

**Quarter Finals**

|                              |         |                                      |       |
|------------------------------|---------|--------------------------------------|-------|
| Kashif Shuja/Daniel Sharplin | lost to | Dan Jenson/Joseph Kneipp (Australia) | 1 - 3 |
|------------------------------|---------|--------------------------------------|-------|

|                                |      |   |       |
|--------------------------------|------|---|-------|
| Campbell Grayson/Martin Knight | beat | Rodney Durbach/Adrain Hansen (S Africa) | 3 - 2 |
|--------------------------------|------|---|-------|

#### Semi Final

|                                |         |  |       |
|--------------------------------|---------|--|-------|
| Campbell Grayson/Martin Knight | lost to | Anthony Ricketts/Stewart Boswell (Australia) | 0 - 3 |
|--------------------------------|---------|--|-------|

#### Bronze Medal Playoff

|                                |      |  |       |
|--------------------------------|------|--|-------|
| Campbell Grayson/Martin Knight | beat | Cameron White/Cameron Pilley (Australia) | 3 - 2 |
|--------------------------------|------|--|-------|

### COMMONWEALTH GAMES, MELBOURNE, MARCH 2006

#### Individuals

|                 |                      |         |                               |       |
|-----------------|----------------------|---------|-------------------------------|-------|
| Shelley Kitchen | 1st Round            | beat    | Naluge Guy (Papau New Guinea) | 3 - 0 |
|                 | 2nd Round            | beat    | Jenny Duncalf (England)       | 3 - 1 |
|                 | Quarter Final        | beat    | Vicky Botwright (England)     | 3 - 1 |
|                 | Semi Final           | lost to | Rachael Grinham (Australia)   | 0 - 3 |
|                 | Bronze Medal Playoff | beat    | Nicol David (Malaysia)        | 3 - 1 |
| Tamsyn Leevey   | 1st Round            | lost to | Tenille Swartz (South Africa) | 0 - 1 |

#### Mixed Doubles

##### Pool Play

|                             |      |   |       |
|-----------------------------|------|---|-------|
| Shelley Kitchen/Glen Wilson | beat | Runa Reta/Matthew Giuffre (Canada)          | 3 - 0 |
| Shelley Kitchen/Glen Wilson | beat | Tehani Guruge/Yassir Issadeen (Sri Lanka)   | 3 - 0 |
| Lara Petera/Callum O'Brien  | beat | Alison Waters/Adrian Grant (England)        | 3 - 2 |
| Lara Petera/Callum O'Brien  | beat | Sharon Chimfwembe/Chiluba Chilufya (Zambia) | 3 - 0 |
| Lara Petera/Callum O'Brien  | beat | Vanessa Florens/Nadeem Hosenbux (Mauritius) | 3 - 0 |

##### 1st Knockout round

|                            |      |   |       |
|----------------------------|------|---|-------|
| Lara Petera/Callum O'Brien | beat | Madeline Perry/Steve Richardson (Nth Ireland) | 3 - 0 |
|----------------------------|------|---|-------|

##### Quarter Finals

|                             |         |   |       |
|-----------------------------|---------|---|-------|
| Shelley Kitchen/Glen Wilson | beat    | Diana Argyle/Craig vander Wath (South Africa) | 3 - 0 |
| Lara Petera/Callum O'Brien  | lost to | Vicky Botwright/James Willstrop (England)     | 1 - 3 |

##### Semi Finals

|                             |         |   |       |
|-----------------------------|---------|---|-------|
| Shelley Kitchen/Glen Wilson | lost to | Vicky Botwright/James Willstrop (England) | 2 - 3 |
| Bronze Medal Playoff        |         |   |       |
| Shelley Kitchen/Glen Wilson | lost to | Rachael Grinham/David Palmer (Australia)  | 0 - 3 |

#### Women's Doubles

##### Pool Play

|                               |      |  |       |
|-------------------------------|------|--|-------|
| Louise Crome/Lara Petera      | beat | Naluge Guy/Eli Webb (Papua New Guinea)         | 3 - 0 |
| Louise Crome/Lara Petera      | beat | Jenny Duncalf/Alison Waters (England)          | 3 - 2 |
| Louise Crome/Lara Petera      | beat | Karen Anderson/Marlene West (Jamaica)          | 3 - 0 |
| Shelley Kitchen/Tamsyn Leevey | beat | Nirasha Guruge/Tehani Guruge (Sri Lanka)       | 3 - 0 |
| Shelley Kitchen/Tamsyn Leevey | beat | Kasey Brown/Amelia Pittock (Australia)         | 3 - 2 |
| Shelley Kitchen/Tamsyn Leevey | beat | Frania Gillen-Buchert/Louise Philip (Scotland) | 3 - 0 |

##### Quarter Finals

|                               |         |   |       |
|-------------------------------|---------|---|-------|
| Louise Crome/Lara Petera      | lost to | Rachael Grinham/Natalie Grinham (Australia) | 1 - 3 |
| Shelley Kitchen/Tamsyn Leevey | beat    | Tania Bailey/Vicky Botwright (England)      | 3 - 2 |

##### Semi Final

|                               |      |                          |       |
|-------------------------------|------|--------------------------|-------|
| Shelley Kitchen/Tamsyn Leevey | beat | Louise Crome/Lara Petera | 3 - 2 |
|-------------------------------|------|--------------------------|-------|

##### Bronze Medal Playoff

|                          |         |  |       |
|--------------------------|---------|--|-------|
| Louise Crome/Lara Petera | lost to | Tania Bailey/Vicky Botwright (England) | 1 - 3 |
|--------------------------|---------|--|-------|

**Gold Medal Playoff**

Shelley Kitchen/Tamsyn Leevey lost to Rachael Grinham/Natalie Grinham (Australia) 1 – 3

**Men's Doubles****Pool Play**

Campbell Grayson/Martin Knight beat Christian Bailey/Steve Nobbs (Norfolk Is) 3 – 0

Campbell Grayson/Martin Knight beat Joshua Pinard/Colin Ramasra (Trinidad) 3 – 0

Campbell Grayson/Martin Knight beat Harry Leitch/John White (Scotland) 3 – 2

**1st Knockout round**

Campbell Grayson/Martin Knight beat Aamir Khan/Khayal Khan (Pakistan) 3 – 0

**Quarter Finals**

Campbell Grayson/Martin Knight beat Nick Matthew/James Willstrop (England) 3 – 1

**Semi Final**

Campbell Grayson/Martin Knight lost to Stewart Boswell/Anthony Ricketts (Australia) 0 – 3

**Bronze Medal Playoff**

Campbell Grayson/Martin Knight lost to Dan Jenson/David Palmer (Australia) 1 – 3

**TRANS TASMAN JUNIOR BOYS SERIES****1st Test – Mana, Wellington 14 June**

|                              | <b>NZ 1</b> | <b>AUSTRALIA 4</b>            |                      |
|------------------------------|-------------|-------------------------------|----------------------|
| Evan Williams (Wellington)   | lost to     | Zac Alexander (Queensland)    | 5/9 9/3 6/9 8/10     |
| Chris Lloyd (Waikato)        | lost to     | Nathan Stevenson (Queensland) | 4/9 9/6 2/9 3/9      |
| Lui Syder (Auckland)         | beat        | Matt Reece (New South Wales)  | 9/7 9/7 3/9 8/10 9/4 |
| Josh Thom (Auckland)         | lost to     | Rex Hedrick (Victoria)        | 6/9 9/7 1/9 3/9      |
| Keegan Burkhart (Wellington) | lost to     | Nathan Kam (New South Wales)  | 2/9 7/9 8/9          |

**2nd Test - Palmerston Nth 15 June**

|                            | <b>NZ 1</b> | <b>AUSTRALIA 4</b>            |                       |
|----------------------------|-------------|-------------------------------|-----------------------|
| Evan Williams (Wellington) | lost to     | Nathan Stevenson (Queensland) | 6/9 5/9 4/9           |
| Chris Lloyd (Waikato)      | lost to     | Zac Alexander (Queensland)    | 1/9 0/9 2/9           |
| Lui Syder (Auckland)       | lost to     | Nathan Kam (New South Wales)  | 2/9 9/6 7/9 9/6 4/9   |
| Josh Thom (Auckland)       | beat        | Matt Reece (New South Wales)  | 10/8 9/6 5/9 8/10 9/6 |
| Matt Nation (Central)      | lost to     | Rex Hedrick (Victoria)        | 0/9 7/9 4/9           |

**3rd Test – Mana, Wellington 16 June**

|                              | <b>NZ 2</b> | <b>AUSTRALIA 3</b>            |                 |
|------------------------------|-------------|-------------------------------|-----------------|
| Evan Williams (Wellington)   | beat        | Rex Hedrick (Victoria)        | 9/7 6/9 9/6 9/1 |
| Chris Lloyd (Waikato)        | lost to     | Matt Reece (New South Wales)  | 7/9 2/9 4/9     |
| Josh Thom (Auckland)         | beat        | Nathan Kam (New South Wales)  | 9/3 9/4 9/7     |
| Matt Nation (Central)        | lost to     | Zac Alexander (Queensland)    | 2/9 9/7 3/9 2/9 |
| Keegan Burkhart (Wellington) | lost to     | Nathan Stevenson (Queensland) | 3/9 1/9 6/9     |

**WORLD JUNIOR MEN'S CHAMPIONSHIPS, PALMERSTON NORTH 17 – 28 JULY 2006****Individual Results**

|               |              |         |                            |                      |
|---------------|--------------|---------|----------------------------|----------------------|
| Josh Thom     | First Round  | beat    | Hisham Saleh (Kuwait)      | W/O                  |
|               | Second Round | lost to | Rudi Willemse (RSA)        | 1/9 3/9 10/8 4/9     |
| Evan Williams | First Round  | lost to | Elvinn Keo (Malaysia)      | 5/9 9/4 6/9 10/8 3/9 |
| Chris Lloyd   | First Round  | beat    | Christopher Plimpton (USA) | 9/5 9/0 9/1          |
|               | Second Round | lost to | Simon Rosner (Germany)     | 1/9 0/9 3/9          |
| Lui Syder     | First Round  | lost to | Conor O'Hare (Ireland)     | 7/9 9/2 5/9 1/9      |

**Team Results**
**Pool Play**
**New Zealand 0 - Malaysia 3**

Josh Thom lost to Choong Kam Hing 2/9 0/9 3/9  
 Evan Williams lost to Elvinn Keo 10/9 5/9 3/9 9/5 4/9  
 Chris Lloyd lost to Ivan Yuen 0/9 10/8 0/9 3/9

**9th -19th Playoff**
**New Zealand 1 - Australia 2**

Evan Williams beat Nathan Stevenson 3/9 9/3 9/6 9/6  
 Josh Thom lost to Matt Reece 9/5 6/9 1/9 2/9  
 Chris Lloyd lost to Rex Hedrick 9/1 8/10 5/9 9/6 1/9

**13th - 19th Playoff**
**New Zealand 3 - Zimbabwe 0**

Evan Williams beat Deepesh Patel 9/1 9/4 9/5  
 Josh Thom beat Ahmed Hassan 9/3 9/5 9/4  
 Lui Syder beat Ainsley Gannaway 9/4 9/0 9/3

**13th - 19th Playoff**
**New Zealand 1 - Ireland 2**

Evan Williams lost to Rory Burne 6/9 4/9 9/5 6/9  
 Josh Thom beat Conor O'Hare 9/2 9/0 9/2  
 Chris Lloyd lost to Chris O'Kane 5/9 8/10 1/9

**New Zealand 0 - Canada 3**

Josh Thom lost to Keith Pritchard 9/2 6/9 2/9 2/9  
 Chris Lloyd lost to Andrew McDougall 5/9 4/9 9/6 4/9  
 Lui Syder lost to Dave Glass 5/9 0/9 8/10

**13th - 19th Playoff**
**New Zealand 0 - USA 3**

Evan Williams lost to Mark Froot 6/9 9/2 7/9 5/9  
 Josh Thom lost to Reed Endresen 5/9 9/7 8/10 1/9  
 Lui Syder lost to Todd Harrity 2/9 2/9 6/9

**13th - 19th Playoff**
**New Zealand 3 - Finland 0**

Evan Williams beat Pyry Poikolainen 6/9 9/7 9/0 9/3  
 Josh Thom beat Petteri Siren 9/0 9/4 9/2  
 Lui Syder beat Aatos Mannroos 7/9 9/2 9/1 9/1

**15th - 16th Playoff New Zealand finished 15th**
**New Zealand 2 - Japan 1**

Evan Williams beat Yuuta Fukui 9/6 9/4 9/4  
 Josh Thom beat Bumpei Kawano 10/8 9/2 7/9 9/4  
 Lui Syder lost to Shinnosuke Tsukue 3/9 9/10 5/9

**WORLD WOMEN'S TEAM CHAMPIONSHIP – EDMONTON, CANADA 24 – 30 SEPTEMBER 2006**
**Pool Play**
**New Zealand 3 - Japan 0**

Shelley Kitchen beat Mami Nishio 9/3 9/2 9/3  
 Jaclyn Hawkes beat Chinatsu Matsui 9/3 6/9 9/0 9/7  
 Louise Crome beat Sachiko Shinta 9/0 9/2 9/3

**Pool Play**
**New Zealand 3 - USA 0**

Shelley Kitchen beat Latasha Khan 9/5 9/0 9/6  
 Jaclyn Hawkes beat Meredith Quick 9/0 9/4 9/0  
 Louise Crome beat Louisa Hall 9/1 9/5 9/6

**5th – 8th Playoff**
**New Zealand 3 - 0 Ireland**

Shelley Kitchen beat Madeline Perry 9/1 9/3 9/3  
 Jaclyn Hawkes beat Aisling Blake 9/0 7/9 9/0 9/3  
 Louise Crome beat Laura Mylotte 9/5 9/3 1

**Pool Play**
**New Zealand 1 - Malaysia 2**

Shelley Kitchen lost to Nicol David 1/9 3/9 4/9  
 Jaclyn Hawkes beat Sharon Wee 3/9 9/7 9/4 9/5  
 Louise Crome lost to Trisha Chua 8/10 9/10 4/9

**Quarter Finals**
**New Zealand 0 - England 3**

Shelley Kitchen lost to Tanya Bailey 9/6 7/9 4/9 2/9  
 Jaclyn Hawkes lost to Vicky Botwright 2/9 4/9 3/9  
 Louise Crome lost to Jenny Duncalf 0/9 0/9

**5th – 6th Playoff New Zealand finished 5th**
**New Zealand 2 - South Africa 1**

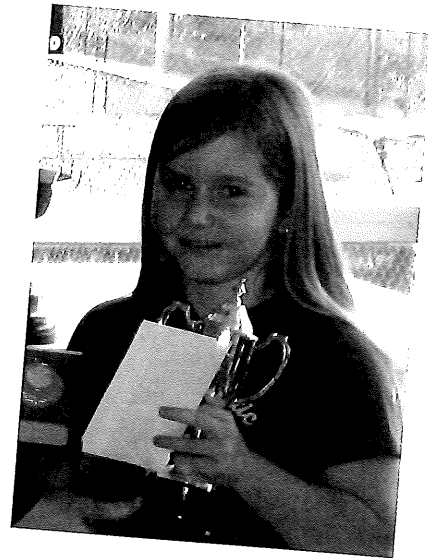
Shelley Kitchen lost to Tenille Schwartz 9/1 7/9 9/3 7/9 0/9  
 Jaclyn Hawkes beat Diana Argyle 9/10 9/3 9/0 10/9  
 Louise Crome beat Karen van der Westhuizen 9/2 9/5 9/7



*Todd Redman, 2006 Boys U 13 Champ*



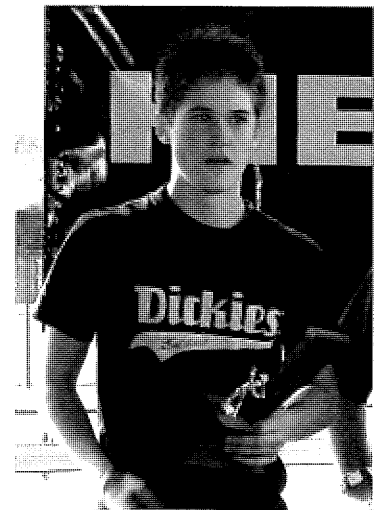
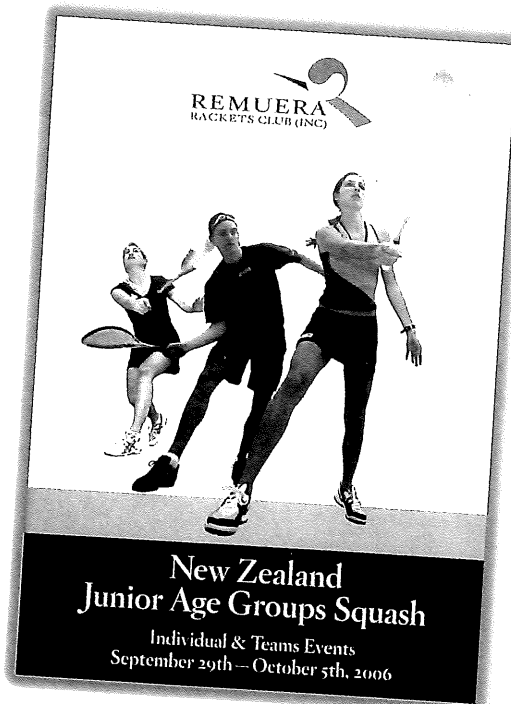
*Josh Thom, 2006 Boys U 19 Champ*



*Abbie Palmer, 2006 Girls U 11 Champ*



*Lance Bebbdoes, 2006 Boys U 15 Champ*

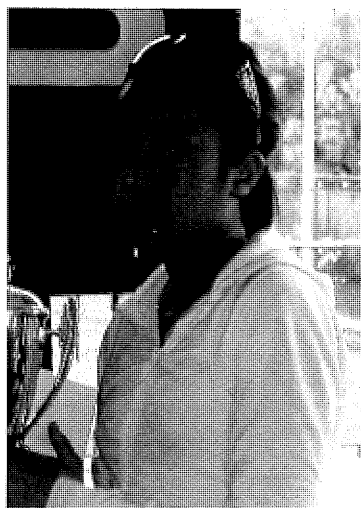


*Evan Williams, Most Improved Male 2006*

### 2006 NZ Junior Age Group Champs Remuera, Auckland



*Chris Collins, 2006 Boys U 11 Champ*



*Crystal Tabata, 2006 Girls U 15 Champ*



*Lui Syder, 2006 Boys U 17 Champ*

## Grading & Statistics Report

The Grading System is the major part of the National Club Member Register. At the end of September 2006 there were 16,658 graded players (2005 - 16,212). In addition, the national club member register had a further 6,834 active leisure/casual club members (2005 - 7,717) giving a combined total of 23,492 "registered" club members (2005 - 23,929).

The total number of players is considered to be below real club membership numbers as indications are that some clubs continue not to provide Squash NZ with complete details of their "leisure" members - those players who have access to club facilities on a "casual" basis.

It cannot be stressed strongly enough that all clubs must ensure that all of their "members", regardless of membership category (or the manner in which the users of club courts access the facilities), are registered with the club, their district and Squash New Zealand. The maintenance of full and complete membership register of all people who use "club facilities" on a regular, even if

2073 "J" grade players, (2005 - 1659; 2004 - 1473; 2003 - 1059). At the end of the 2006 season, "J" grade players, comprised 12.5% of the total grading list and 55% of total graded junior players.

During the 2006 season, the operational policies of the previous season were maintained, the prime intention of which is to maintain a reasonably even spread of players across the B to F grades. Graded player numbers across all grades continue to show that generally the policy under which the grading system is been operated continues to have the desired positive effect on the number of player entries in graded tournaments.

It is pleasing to see an increase in the number of teams entering the Super Champs Event (previously known as the National Graded Club Teams), at district level in 2006 - 290 teams, against 280 teams in 2005. (296 teams in 2004, 303 teams in 2003, 341 teams in 2002, and 366 in 2001).

The increase in team numbers, even if small, appears to reflect the "re-branding" of the event for 2006. However

### Players by Grades (Men & Women combined).

| Oct 06 | %          | Oct 05 | Oct 04 | Oct 03 | Oct 02 | Oct 01 | Oct 00 | Nov 99 | Nov 98 | Nov 97 | Nov 96 |
|--------|------------|--------|--------|--------|--------|--------|--------|--------|--------|--------|--------|
| A1     | 33 .2%     | 25     | 31     | 28     | 26     | 28     | 26     | 26     | 26     | 29     | 25     |
| A2     | 169 1.0%   | 165    | 159    | 175    | 171    | 179    | 171    | 172    | 191    | 163    | 148    |
| B      | 2618 15.7% | 2556   | 2411   | 2453   | 2460   | 2413   | 2339   | 2379   | 2358   | 2276   | 2053   |
| C      | 3380 19.7% | 3340   | 3063   | 3261   | 3384   | 3423   | 3410   | 3498   | 3560   | 3719   | 3765   |
| D      | 2665 16.0% | 2674   | 2739   | 3035   | 3205   | 3466   | 3515   | 3755   | 4055   | 4396   | 4766   |
| E      | 4038 24.2% | 4075   | 4174   | 4269   | 4531   | 4776   | 4628   | 5117   | 5502   | 5863   | 6247   |
| F      | 1782 10.7% | 1718   | 2017   | 2279   | 2776   | 2990   | 2817   | 2535   | 2896   | 3054   | 2956   |
| "J's"  | 2073 12.5% | 1659   | 1473   | 1095   |        |        |        |        |        |        |        |
|        | 16,658     | 16,212 | 16,067 | 16,595 | 16,553 | 17,275 | 16,906 | 17,482 | 18,588 | 19,500 | 19,960 |

casual basis, is of considerable benefit to the sport, at all levels. As with most sports, the number of people participating in the sport of squash has a direct bearing on the ability of the sport to attract outside support and revenue by way of sponsorships and grants, be it at club, district or national level, form the various sources from which such funds are available.

The "J" Grades were introduced at the beginning of the 2003 season to provide a competitive structure for the young/beginner juniors. At the end of 2006, there were

one must still ask if clubs and districts are promoting the event for what it really is - a interclub graded teams championship within each district, with the opportunity for the winning team to represent their club and district at a national championship. No other sport provides its "club" players at all levels with the opportunity of attending a national event, with a national title at stake!

Numerically, the senior and masters numbers have fallen over the past five years, while the junior numbers have shown an upward trend. Overall, total numbers are slightly up on 5 years ago.



*New Zealand Club Masters Champions 2006, Kawaroa Park, New Plymouth.  
L to R; Rhys Powell, Peter Roughan, Kaye Elliot, Mike Roberts.*

**Age-group Statistics for the past five years provide interesting figures:**

|                          | 2006   |       | 2005   |       | 2004   |       | 2003   |       | 2002  |       |
|--------------------------|--------|-------|--------|-------|--------|-------|--------|-------|-------|-------|
| Seniors (19 to 34 years) | 4308   | 25.9% | 4397   | 27.2% | 4616   | 29.0% | 5,001  | 30.1% | 5,515 | 33.3% |
| Masters (35 and over)    | 8580   | 51.5% | 8437   | 52.0% | 8385   | 52.0% | 8,773  | 52.8% | 9,170 | 55.4% |
| Juniors (Under 19)       | 3770   | 22.6% | 3378   | 20.8% | 3066   | 19.0% | 2,821  | 17.0% | 1,868 | 11.3% |
| Totals                   | 16,658 |       | 16,212 |       | 16,067 |       | 16,595 |       | 6,553 |       |

Increasing junior numbers are no doubt attributable to both the work of the Squash Development Officers and the ability of clubs to offer new young junior players a competitive structure specifically aimed at the beginner level.

During the 2006 season we continued with the multi-function grading list "search" facility on the Squash NZ website, and continued the twice monthly update/publication frequency on the 1st and 15th of each month. The site attracts a considerable number of "hits" on a daily basis.

The regular publication of the grading list on the website continues to highlight areas of concern, not the least of which is the "prompt collection of results". Possible improvements to this area of the grading system continue to be evaluated.

The Squash Grading System continues to be the backbone of competitive squash in New Zealand and its successful operation is due to the considerable level of volunteer

time and effort by club and particularly district statisticians. Considerable thanks must be extended to them for their work which benefits individual players and the sport of squash as a whole.

Finally, I would like to acknowledge the work of our National Co-ordinator, Charmian Hayes, over the past 18 years, yes - since at 1988.

Charmian has decided to relinquish the position at the end of this season. Her experience and knowledge has been to the forefront of the day to day operation and management of the grading system, virtually since the point that the computer based system was introduced. Charmian's considerable knowledge and experience has proved to be of immense value to the sport, and we wish her well for the future.

**STEVE SCOTT**  
**Director - Gradings & Statistics**

## Refereeing Report

The 2006 year was extremely active for the referees, with four national junior events, six senior events including one PSA and two PSA/WISPA events and three Trans-Tasman tests. The definite highlight was the Junior Men's World Championship at Palmerston North from 15-28 July.

The Junior Men's kicked off with a two day workshop with presentations from Chris Sinclair, John Small, Jack Allen, Damien Green and Mike Collins. The areas covered included the role of the official, interference, injury, turning, conduct on court, WSF accreditation and assessing. All the presenters were highly qualified having either a world or international referee status. The Kiwi contingent made up 20 of the 32 that attended and without doubt everyone benefitted from the knowledge, wisdom and experience these people brought. All were on hand for the event where the individuals ran from Monday 17 July to Saturday 22 July followed by the teams on Sunday 23 July to Friday 28 July. The assessments carried out over the course of the event were beneficial to the New Zealand referees, enabling them to sit with the overseas referees and learn one on one.

Congratulations to Grant Smith and his team for an exceptionally well run event and to Joss Urbahn for her role as tournament referee. It was an efficient, highly organized schedule where everyone knew exactly what was happening.

Joss Urbahn was also the recipient of this year's Derek Cook Memorial trophy for her outstanding work at the Junior Men's World Championship. Two years in the making and hundreds of hours of voluntary work went into making that event extremely successful.

It has been acknowledged that 10 years is too big a gap between world events and it is hoped the World Masters in 2008 in Christchurch will present all our referees with the same learning experience.

We have been blessed with applications for referee qualifications this year. There were eight national and 11 districts applications received with two national qualifications being accredited - Heather Findlay and Aileen Buscke from Auckland. Five district qualifications were also accredited - Keith Redman from Hawkes Bay and Rewi Hemara, Pat McHugh, and Rodney Ford, all from Auckland.

A workshop was held in August at the Southland Open enabling candidates from Otago and Southland to try for their district qualification. There are currently five candidates underway, with the hope that 2007 will bring about their qualification.

It was especially sad to finish the year with the resignation of three of our more experienced national referees, Gary Hutchison, Tim Cook and Doug Flint.

Gary Hutchison qualified as a national referee in 1984 and was tournament referee at the World Junior's that year. Tim Cook qualified in 1997 and Doug Flint qualified in 1991. Their refereeing experience combined totals nearly 50 years, which is an exceptional level of service to our sport. On behalf of New Zealand Squash, thank you. All of you have devoted countless hours (all voluntary) and most of the time with little thanks.

You have all made your mark in the history of squash in this country and have helped to create a healthy, positive environment for other referees to follow. It has been a pleasure working with you all.

On the international front, Paul Sneyd is still chasing his international qualification and attended the World Men's Teams event in December 2005 in Pakistan. He has unfortunately been unable to gain enough credits this year to receive that international status. Paul has also some problems with his health late this year but all going according to plan he will be ready to fight the battle for his international status early in the New Year.

Having been in the presence of several world and international referees this year, I certainly have a greater appreciation of not only the effort required but the personal sacrifice it takes - both financial and personal. It is hoped we can continue to receive funding from SPARC for Paul's future endeavours as he continues to work towards his international accreditation.

Finally my thanks to all those who help to make refereeing happen, particularly Nichol Taylor, Gary Hutchison and Paul Sneyd as well as the team of national referees, the team in the New Zealand Squash office and the district conveners.

Becoming a good official takes time, dedication and practice and all the referees this year have done that and more. Good luck for 2007.

### JAN MCARA

#### Director - Refereeing

##### New Zealand Referees:

Nichol Taylor, Peter Highsted, Gary Hutchison, Paul Sneyd, Doug Flint, Dave Conza, Tim Cook, Naeomi Beaumont, Pauline Boyle, Nigel Lloyd, Sandra Tinkler, Jan McAra, Chris Buckland, Phil Morgan, Ian Gardiner, Paddy Martin, Ross Minehan, Wayne Smith, Brett Watene, Ian Taiaroa, Kay Newman, Heather Findlay, Aileen Buscke.





## Lion Foundation 2006 NZ Squash Club of the Year University of Otago Squash Club

The recipient of the Lion Foundation Club of the Year for 2006 is the University of Otago Squash Club.

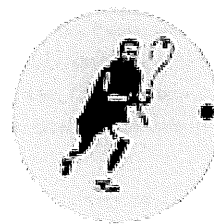
The club, which is only a three court complex, situated on the Otago University campus, boasts a membership of 300 players, 90% of whom are tertiary students. In the past three years the growth of the club is reflected in an increase of 130 SEM numbers and an extra 15 teams participating in the District interclub competition. A total of 29 teams play in all divisions of interclub providing competition for all levels of ability. The club takes a full part in squash activities in the Otago District and district interclub is worked around the University holidays when most students leave Dunedin. In the 2006 Super Champs they entered Mens teams in all grades from B-E and C & E grade Womens teams. The mens D & E grade teams contested the National finals. The club financially supports their players who are taking part in representative tournaments.

An enthusiastic club committee comprising 30 members is active in promoting squash in several ways – during orientation week they staff a promotional tent and use the micro-court to display squash, advertise in the student newspaper each week and participate in the Squash Otago Open Day and Healthy Lifestyle Week. The club has developed a link with the School Of Physical Education who use the courts two mornings a week as part of their sports training course.

The club website, with up to date information and news, is publicised around the University and has links to Squash Otago and Squash New Zealand. Communication with club members is through a well-maintained database of email addresses from which bulk messages can be sent. Email is a more stable form of communication than land line phone numbers which change when students move into new flats.

The transitory nature of membership saw the club add 108 new players to the grading list during 2006, deleted 68 who had left Dunedin, regraded 4 players and transferred

## UNIVERSITY OF OTAGO SQUASH



12 players to other clubs. Building an accurate database is convenient for future communication not only for the club but for the Squash Otago Executive Officer who frequently needs to contact members. The work of the Club Statistician was recognised by being given the Squash Otago award for Services to Squash in 2006.

The club has a high profile on campus which was recognised this year when the club won the 2006 Otago University Club of the Year award.

This year a new kitchen at a cost of \$13,000 has been added to the facility and the Otago University Students Association has granted the club \$100,000 to upgrade the Mens & Womens changing rooms over the summer break.

The philosophy of the club is to capture the interest of students in the game of squash before they become committed to other leisure activities and they will then continue to play squash in other parts of the country once they have finished their time at University in Dunedin.

Squash New Zealand acknowledges the support of the Lion Foundation and congratulates the University of Otago Squash Club on winning the award in 2006.

**WWW.CLUBK.CO.NZ**  
**SQUASH GYM PROSHOP**



## Club Kelburn

### LUCKY NUMBER THIRTEEN

As I write my thirteenth report for the annual report for Club Kelburn, it is time to reflect on another successful year and another six figure profit for the Club. 1994 was the year I started at the club and the first few years involved huge changes for the Club. At that stage it was on very shaky ground financially and the first year's profit of around \$11,000 was considered very good considering the state the club was in when I started half way through that financial year.

The next few years saw us evolve, with the introduction of various squash programmes, innovations in the pro shop and the start of the gym.

The last few years have seen us look for more fine tuning as opposed to huge changes and the turnover and profit have levelled off at healthy numbers.

### 2006 – The Key Areas

This last year has seen the squash court revenue increase by 10 %, which is a great result. I have really concentrated this year on improving the delivery of squash programmes and I am sure this is what has brought a good lift in the numbers.

The shop has also increased 10% in profit. This has come about through aggressive marketing locally and nationwide and buying right. I have coined the phrase 'Honest Rob' and used it in posters and other advertising, so that people have a laugh and remember who they are buying off. This personality branding works really well for us- a bit like the mad butcher, but better looking. The website and email marketing that we do continues to build this part of the business and we will continue to innovate in this area.

The gym revenue this year has dropped 18%. We have been hurt by a couple of things in our market here - the first being the University right next door spending literally millions on their recreation centre. Consequently we have not had as many students join this year. Also there have been a number of new gyms pop up in the capital this year giving people more choice. I have also spent more

time on the squash side of the business. These things have combined to see the numbers drop.

However, I don't like losing and I am working on the marketing side to try to stop the slide, and lift the numbers this coming year.

### Club Improvements

We have spent money this year tidying up three of our four changing rooms, especially the main womens one. We have also painted quite a few courts and have really tried to lift the cleaning side of the club. These are basic things but make a huge difference to the perception of the club. We will continue to try to lift our standards in this area as it is so important.

We don't have plans for radical changes this coming year, but will continue to upgrade as needed. Gym gear needs constant upgrading otherwise the market leaves you behind.

### To The Future

Our marketing plans are going to be focused more and more on member get member type campaigns and electronic media through database email and website marketing . The more I use the more traditional advertising mediums of radio, newspaper and fliers, the more I think they are not right for us. We need something that can cut through all the other rubbish that we constantly hear, see and read and get our clients to become advocates for our club.

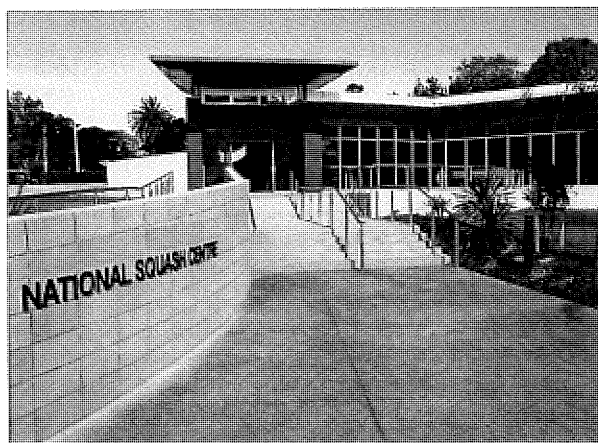
### Thanks

Thanks again this year to the wholesalers who have been very supportive of our marketing, and all the other supporters of Club Kelburn, including our tradesmen. Our friends at Fuji Xerox have been a great help, as has my website expert Jeremy, who continues to help even though he now lives in Auckland. Thanks also to Neven Barbour for his guidance once again this year. He has helped me for 13 years to head in the right direction.

Last and most important, thanks to my staff once again this year for putting in a good years work and coming up with some good ideas to keep Club Kelburn at the forefront of the leisure business in your nations capital!!!

**"HONEST" ROB WALKER**  
Manager Club Kelburn





## National Squash Centre

The 2006 year has been one of considerable progress a year of considerable progress for the National Squash Centre Trust, following the completion of the sale of the cafe business to the Moodley family. The Trust is focused on enhancing the operation of the court hireage operation which under the direction of Bryce Cottle has grown significantly. Patronage of the courts has grown 30%. This is particularly pleasing for the Trust as of course it is the Trust's core activity and Bryce has done an excellent job under the continuing guidance of our Executive Director Neven Barbour.

The key event for the year was the decision of the Trust Board with the support of Squash New Zealand's Board to purchase a ASB all glass portable court. This was funded by a grant of 50% from the ASB Community Trust and

from the proceeds of the sale of the cafe business. This latter sum was to be repaid to Squash New Zealand but at its request was utilised instead to assist with the purchase of the court.

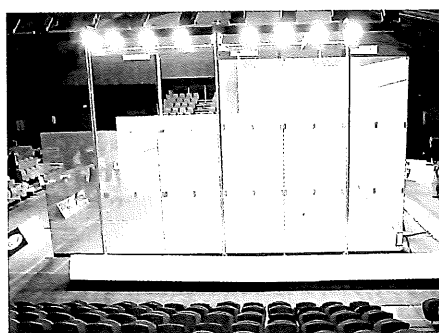
The Trust would like to express its sincere appreciation to the ASB Community Trust for its significant support both in the establishment of the National Squash Centre originally and now in the acquisition of this wonderful asset to further enhance the image of Squash in New Zealand.

The court has been used with great success for the World Junior Men's Championships where its use was clearly a substantial benefit to enhance the Championship significantly. It is envisaged that the Court will be a frequently used asset in major Squash events.

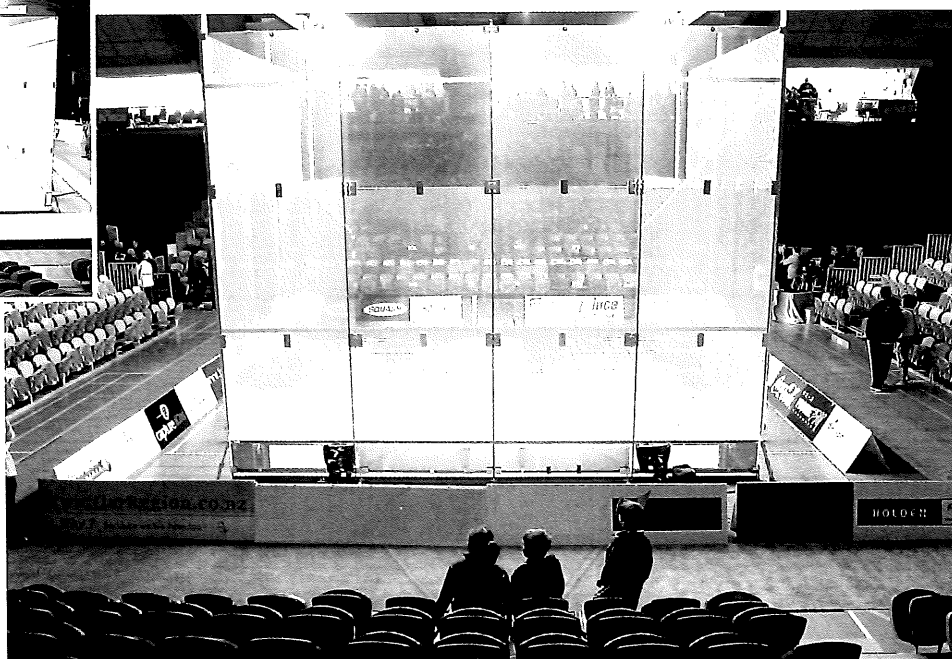
I would like to thank the members of my Board, for their continuing contribution and support during the year, being Andrew Codling, Margaret Cotter, Mike Greig, Susie Simcock, Mike Sumpter and Executive Director Neven Barbour.

**BRUCE DAVIDSON**

**Chairman**



*The Trust's new ASB all portable glass show court at the World Junior Men's Championships.*



## Masters Report

Things have been fairly quiet for our top Masters players this year, with no Australian visit taking place. The Australian Masters Team will come over next year to North Shore and play in the National Masters Championships, which is combined with the Oceania Masters. There will be a 3 test series on either side of this event.

### National Club Masters Teams Event.

This was held at Hawkes Bay Lawn Tennis and Squash Club in July. This club has a very keen group of masters who have supported this event each year since it started in 1999. They put on a very enjoyable and entertaining weekend.

Once again there were 2 divisions. The championship division had 5 teams and the social division had 4 teams. Kawarua Park successfully defended their win in 2005, with a hard fought tie against Havelock North. It was great having this club take part for the first time, and they are keen to host in the future.

A big part of the success of this event was due to the very generous sponsorship by Jackson's Flooring. They have very kindly offered to continue with this support next year in Wanganui.

### World Masters Squash Championships

These were held in Capetown, South Africa, in October, and 14 of our masters' men took part. Trevor Colyer did very well to come runner-up in the men's 55 age group. Barry Gardiner came 4th in his age group.

### NZ Masters Championships

These have just been held at Geyser City, Rotorua, over Labour weekend. Cheryl Te Kani-McQueen and Gini Tuhakaraina did a great job of organising this event. Cheryl even sacrificed the defence of the title she won last year to ensure the tournament ran smoothly. A very full programme was arranged for us, including Ash Brownrigg doing a Bungy jump! A Maori welcome and closing added to the atmosphere of the event. Entries were considerably down on last year, which was disappointing. A number of factors contributed to this,

which we will try to address. The clash with the World Masters was not significant, as only 5 players who played in last year's National's attended the World Masters this year.

### Rob Roche Trophy

The Rob Roche Trophy for Services to Masters Squash was awarded to Sandra Tinkler in recognition of her contribution to Masters Squash. Sandra has been a Wellington Masters Selector, Convenor, Manager and player for more than 15 years. She has been a National Masters Selector for 8 years. As well, Sandra has been a Wellington and NZ Senior selector, Wellington President, manager of senior and junior teams and is a NZ Referee. A fine record of service.

### Individuals

There was a very high standard of play, and some very close finals. All age group winners went according to seeding except for the men's 65's where Kelvin Harding came over from Australia to beat Eddie Condor.

Full results elsewhere in this publication.

### Inter District Teams Event

Six District teams entered this event. It was disappointing that Otago were unable to field a team, after competing last year.

A Round Robin of the 6 teams was played, meaning 2 matches a day on a couple of days. There were some very close ties. Bay of Plenty were clearly superior, their closest tie being 7/3 against Auckland.

Team placings were –

1. Bay of Plenty
2. Canterbury
3. Auckland
4. Waikato
5. Central Districts
6. Wellington



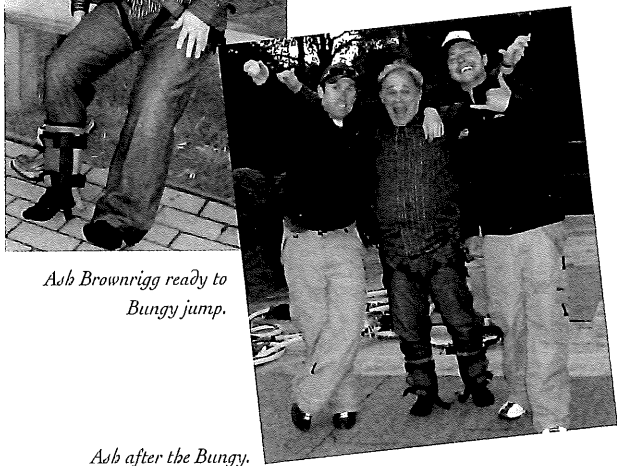
*Bay of Plenty - winners of NZ Inter District Masters 2006  
Darryl Russell, Vicki Beker, Peter Edmonds, Sandra Egan, Cheryl Te Kani McQueen, Ash Brownrigg, Mike Tombleson,  
Claire Horton, Brent Sherman, Kathryn Austin, Danny McQueen, Michel Galloway, Thomas Egan.*



*Pam Gearð, Lisa  
Cowlarð, Stephen Wren,  
do the Swoop!*



*Waikato team faithful, led by Robbie Wyatt.*



*Ash Brownrigg ready to  
Bungee jump.*

*Ash after the Bungee.*

**Future Masters Events to look forward to**

July 2007 National Club Masters Teams in Wanganui, September 2007 Australian Masters Championships in Perth, October 2007 NZ and Oceania Masters Championships in North Harbour, October 2007 Test series with Australia.

**In Conclusion**

With the number of Masters Players increasing, I think it is important that these players, rather than just having friendly games, continue to take part in organised interclub, tournaments and inter-district events. This helps raise the profile of squash as a game for all ages. I think we need to promote the National Championships as a holiday destination for the over 35's to look forward to and plan for each year.

Thankyou to Squash New Zealand and to my fellow selectors, Sandra Tinkler and Wayne Seebeck for all their support throughout the year.

**JUDY COOPER**

**Director - Masters**



## 2006 World Junior Men's Squash Championships

Participation and hosting any World Championship in whatever capacity is a tremendous achievement. With this in mind, it was a great honour to host the 14th World Junior Men's Championships in Palmerston North during late July.

The World Juniors were a great success, both on and off the court! Although New Zealand had hosted previous World Championships, it was over a decade since we were officially on the WSF calendar. Staging a successful Championships has put New Zealand Squash back on the international map.

3 years of planning finally came to fruition when the Championships were opened with an exciting Opening Ceremony in front of a 1000 guests. A unique cultural performance was performed on Squash New Zealand's new all-glass court at Arena Manawatu on the evening of Sunday 16 July which set the tone for the event.

The first week was dedicated to the Individuals with the Team event following in the second week. The Individuals pitched 125 competitors together from 19 nations with Egypt's rising superstar, Ramy Ashour hot favourite. He didn't disappoint, collecting his second consecutive title from countryman, Omar Mossad, in straight games. Ramy then lead his Egyptian team to a narrow team's victory over defending team's champ, Pakistan.

The championships then concluded with a sell-out Closing dinner and presentations at SquashGym on the evening of Friday 28 July.

### Overview

Some interesting facts from the Championships included....

- 19 nations attended, including 125 competitors, were part of the 400+ international guests that attended the 2 week long Championships.
- Largest spectator crowds to watch the sport in New Zealand for over a decade. 2450 tickets were sold for the finals.
- The finals were staged at Arena Manawatu Stadium on Squash NZ's new portable ASB all-glass court. The headquarters and earlier rounds were played at the 8 court SquashGym Palmerston North club, which had undertaken an extensive refurbishment, including 3 new ASB courts.
- A highlight was the attendance of World Squash Federation President and Squash legend – Jahangir Khan.
- The Championships produced a small surplus and

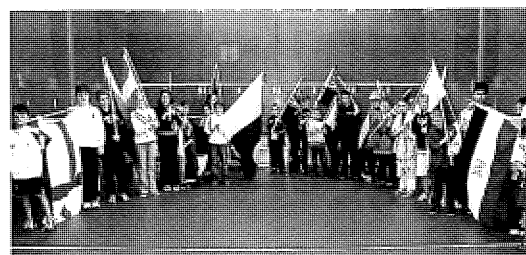
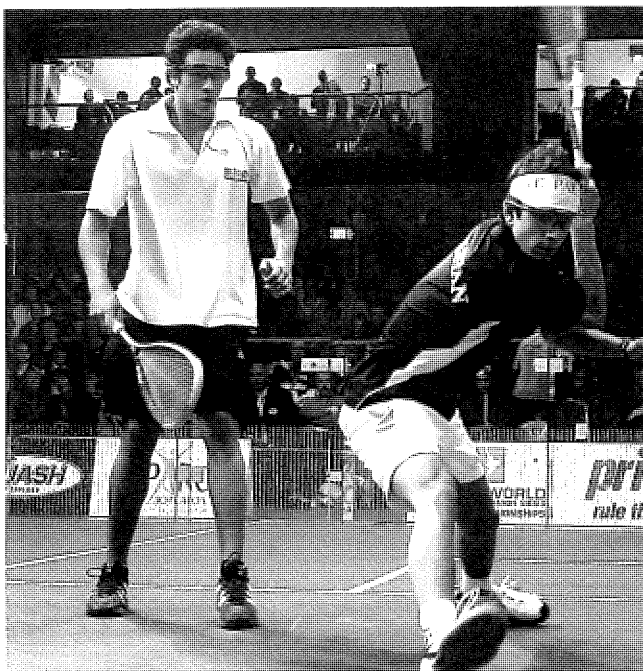
SquashGym collected a venue fee of \$26,000 from a overall event budget of \$337,000. The Championships brought an economic benefit to the country and region of approx \$3 million.

- 200+ volunteers together with the Organising Committee of 22 worked on the event. A mixture of mainly Palmerston North Club members, with Squash NZ, other Central Squash club members and regional Sports Trust representatives.
- The official Championship website ([www.2006worldjuniors.co.nz](http://www.2006worldjuniors.co.nz)) generated over a million hits from 100 countries and was our portal to the outside world.
- An extensive Educational Resource was designed by educational specialists and Central Squash. It was released and taken up by 33 schools in the region who adopted a nation, generating interest and attracting thousands of school children to the event over the 2 week period.
- Team Liaison officers were appointed for each country, 2 for each nation to welcome and help teams settle in and enjoy the Championships.
- The Championships were filmed for TV, snippets were aired on TVNZ news, and Egyptian State TV. A popular Championships DVD's was produced and sold.
- With so many international officials and referees present, a 2-day World Referees workshop was hosted for 40 invited officials just prior to the Championships at Massey University's Institute of Rugby.

### Funding and Sponsorship Update

The Championships had a significant sponsorship and funding component with over \$NZ180,000 raised. Major partnerships included....

- PRINCE SPORTS INTERNATIONAL - Championship naming sponsor.
- KINGSGATE HOTEL – Official Accommodation sponsor.
- MASSEY UNIVERSITY - Use of the Institute of Rugby and other recreational facilities.
- SPARC - The NZ Govt agency for Sport and Recreation.
- TRUST SUPPORT - Gaming & Community Trusts, including NZ Community Trust, Unison Trust, Century Foundation and Central Energy Trust.
- PALMERSTON NORTH CITY COUNCIL - financially supported the event along with SquashNZ and Central Squash.
- COMMERCIAL SPONSORS – PN Finance, Shell Oil,



Action from the 2006 World Juniors, left to right, Ramy Ashour vs Aamir Atlas Khan in the teams final, the Opening Ceremony Haka and flag bearers.

UCOL, Café Net and Coke all contributed to the event.

Together with funding raised for the new ASB courts at SquashGym, over \$500,000 was generated for Squash in the Manawatu region in 2006.

**Venues and Facilities**

Headquarters for the championships and administrative host was the SquashGym Palmerston North club. The club now New Zealand's largest dedicated squash club with 8 glass back courts (including 3 new ASB courts), went through a massive refurbishment for these Championships. The club now has dedicated lounge areas, conference rooms, a state of the art Public Gymnasium, massage area and pro-shop.

The Opening, Closing Ceremonies, play for the Quarter finals, Semis and Finals were held in the international quality venue, Arena Manawatu Indoor Stadium. With the portable All-glass court set up surrounded by 2000+ tiered seating and corporate lounges, made for a truly international setting.

Part of any successful World event is the accommodation packages and Palmerston North was fortunate to have hotels in very close proximity to the club. The Kingsgate Hotel was the official home to players, teams and management during their stay. Part of the international MCK Hotels chain, the Kingsgate was 2 minutes walk from SquashGym. A dedicated athletes' lounge was established to cater for the players providing computers, pool tables, DVDs and music stations.

Another important venue was Massey University's Institute of Rugby, a dedicated, high performance facility with superior accommodation. This was the home to the referees and tournament officials.

**Championship Schedule and competing Nations**

Opening Ceremony - 16 July in the evening.

Individuals - Championships started 17 July with Finals

22 July.

Teams - Pools started 23 July with Team Final and Medal Ceremony 28 July.

Closing Dinner - 28 July in the evening.

Nations that competed were; Australia, Canada, Egypt, England, Finland, Germany, India, Ireland, Japan, Kuwait (who withdrew during the Individuals), Malaysia, Netherlands, New Zealand, Pakistan, South Africa, Switzerland, USA and Zimbabwe. Egypt won the teams event from Pakistan, with NZ finishing 15th.

**An Event to Remember**

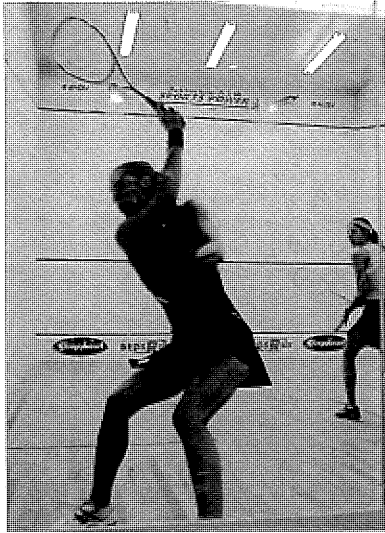
These championships were huge for our sport, for the SquashGym club, Palmerston North City and New Zealand, giving us an international stage we had lacked in recent times. The Organising Committee did a wonderful job of giving the Championships, participants and their supporters "a New Zealand cultural experience" - one to remember.

On a personal note I would like to thank the many companies, organisations and people who have supported these Championships. Our naming sponsor Prince, Jim O'Grady from Squash NZ, Susie Simcock our own World Squash Federation Emeritus President, Sport Manawatu and Central Squash. Not forgetting our hard working Organising Committee led by Joss Urbahn and Stu Baker and the many volunteers who have put in thousands of hours.

It was a wonderful occasion and one we will remember for many years to come.

**GRANT SMITH**

**Chairperson, Organising Committee  
2006 World Junior Mens Squash Championships**



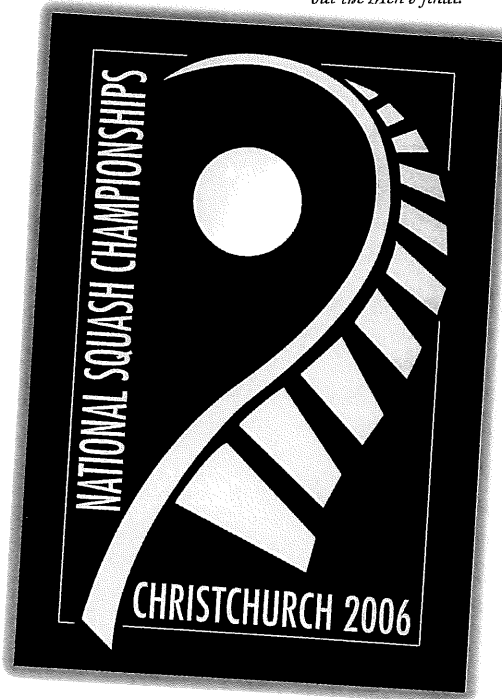
*2006 Women's Champion Shelley Kitchen on strike.*



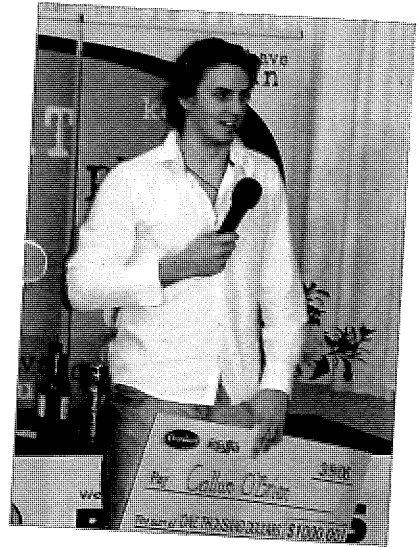
*Callum O'Brien and Kasbif Shuja, battle out the Men's final.*



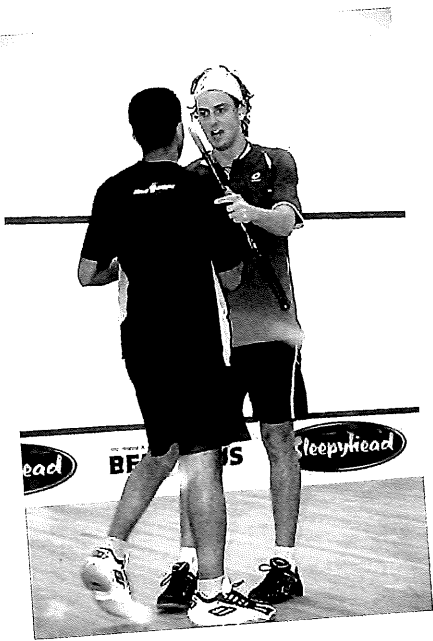
*Joelle King, 2006 Most Improved Woman.*



**2006 New Zealand Senior Champs  
Christchurch.**



*Callum O'Brien, 2006 Champion, accepting the winners cheque.*



*Callum O'Brien the new 2006 Champion.*



*A very gutsy Jackie Hawkes on strike against Shelley Kitchen.*



*Callum O'Brien on strike.*



**Squash New Zealand  
2006 Financials**





## Audit Report

To the Readers of the financial report of New Zealand Squash Incorporated.

We have audited the financial statements on pages 41 - 43. The financial statements provides information about the past financial performance of New Zealand Squash Incorporated and its financial position as at 30th September 2006. This information is stated in accordance with the accounting policies as set out on pages 44 - 47.

### NEW ZEALAND SQUASH INCORPORATED RESPONSIBILITIES

The Executive Council is responsible for the preparation of the financial statements which give a true and fair view of the financial position of New Zealand Squash Incorporated as at 30 September 2006 and of the results of its operations for the year ended 30 September 2006.

Public Sector Grants include funding received from Sport & Recreation New Zealand (SPARC).

The funding is subject to Investment Agreements, detailing acknowledged responsibilities and outcomes upon which the funding is dependant.

It is the responsibilities of the Executive Council to ensure that the obligations under the Investment Agreements are fulfilled.

### AUDITOR'S RESPONSIBILITIES

It is our responsibility to express an independent opinion on the financial statements presented by the Executive Council and report our opinion to you.

The scope of our audit has not included specific testing to ensure the Investment Agreement outcomes have been achieved.

### BASIS OF OPINION

An audit includes examining, on a test basis, evidence relevant to the amounts and disclosures in the financial report. It also includes assessing:

- The significant estimates and judgements made by the Executive Council in the preparation of the financial statements, and
- Whether the accounting policies are appropriate to New Zealand Squash Incorporated circumstances, consistently applied and adequately disclosed.

We conducted our audit in accordance with generally accepted auditing standards in New Zealand. We planned and performed our audit so as to obtain all the information and explanations which we considered necessary. We obtained sufficient evidence to give reasonable assurance that the financial statements are free from material misstatements, whether caused by fraud or error. In forming our opinion we also evaluated the overall adequacy of the presentation of the information in the financial statements.

Other than our capacity as auditors we have no other relationship with or interests in New Zealand Squash Incorporated.

### QUALIFIED OPINION

As with other organisations of a similar nature, control over income in Club Kelburn prior to its being recorded is limited, and no practical audit procedures exist to determine the effect of this limited control.

We have obtained all other information and explanations we have required.

In our opinion:

Proper accounting records have been kept by the Executive Council as far as appears from our examination of those records; and Except for any adjustments that might have been found necessary had we obtained the information described above, the financial statements on pages 41 - 43.

- comply with generally accepted accounting; and
- give a true and fair view of the financial position of New Zealand Squash as at 30 September 2006 and of the year ended on that date.

Our audit was completed on 10 November 2006, and our qualified opinion is expressed as at that date.

**Cameron McGregor FCA BCOM**

**McGregor Bailey**

**2 Crummer Road, Ponsonby, Auckland. New Zealand**

**10 November 2006**



NEW ZEALAND SQUASH (INC)

## Consolidated Statement of Financial Position

As at 30 September 2006

|                                  | Note | 2006<br>\$       | 2005<br>\$       |
|----------------------------------|------|------------------|------------------|
| <b>Accumulated Funds</b>         |      |                  |                  |
| Opening Balance as at 1 October  |      | 1,072,721        | 1,097,184        |
| Surplus / (Deficit) for the Year |      | 31,747           | (24,463)         |
| <b>Total Accumulated Funds</b>   |      | <u>1,104,468</u> | <u>1,072,721</u> |
| <b>Represented By:</b>           |      |                  |                  |
| <b>Current Assets</b>            |      |                  |                  |
| Cash on Hand                     |      | 370              | 370              |
| Current Accounts                 |      | 248,543          | 92,713           |
| On Call Accounts                 |      | 533,538          | 515,231          |
| Term Deposits                    |      | 139,491          | 131,680          |
| Accounts Receivable              |      | 68,904           | 134,603          |
| Stock on Hand                    | 1    | 52,324           | 45,761           |
| Payments in Advance              | 3    | 22,241           | 40,035           |
| <b>Total Current Assets</b>      |      | <u>1,065,411</u> | <u>960,393</u>   |
| <b>Investments</b>               |      |                  |                  |
| Loans to Clubs                   |      | 20,000           | 20,000           |
| Loans to National Squash Centre  |      | 293,073          | 293,073          |
| <b>Total Investments</b>         | 4    | <u>313,073</u>   | <u>313,073</u>   |
| <b>Non-current Assets</b>        | 5    | <u>281,006</u>   | <u>338,275</u>   |
| <b>Total Assets</b>              |      | <u>1,659,490</u> | <u>1,611,741</u> |
| <b>Current Liabilities</b>       |      |                  |                  |
| Accounts Payable                 |      | 171,478          | 208,748          |
| GST Payable                      |      | 30,308           | 2,720            |
| Sundry Accruals                  | 6    | 35,829           | 23,455           |
| Income in Advance                | 7    | 229,486          | 245,483          |
| Provision for Doubtful Debts     |      | 87,921           | 58,614           |
| <b>Total Current Liabilities</b> |      | <u>555,022</u>   | <u>539,020</u>   |
| <b>Total Liabilities</b>         |      | <u>555,022</u>   | <u>539,020</u>   |
| <b>NET ASSETS</b>                |      | <u>1,104,468</u> | <u>1,072,721</u> |

This statement must be read in conjunction with the Notes to the Financial Statements and the Audit Report on Page 40



NEW ZEALAND SQUASH (INC)

## Consolidated Statement of Financial Performance

for the year ended 30 September 2006

|   | Note | 2006<br>\$              | 2005<br>\$              |
|---|------|-------------------------|-------------------------|
| <b>Income</b>                           |      |                         |                         |
| <b>Levies &amp; Subscriptions</b>       |      |                         |                         |
| Affiliation Levies                      | 8    | 435,111                 | 412,422                 |
| Grading Levies                          |      | 17,180                  | 19,840                  |
| Associate Memberships                   |      | 5,645                   | 5,446                   |
| <b>Total Levies &amp; Subscriptions</b> |      | <u>457,936</u>          | <u>437,708</u>          |
| <b>Public Sector Grants</b>             |      |                         |                         |
| SPARC                                   |      | 757,925                 | 605,702                 |
| <b>Total Public Sector Grants</b>       |      | <u>757,925</u>          | <u>605,702</u>          |
| Other Grants & Sponsorships             |      | 221,950                 | 151,249                 |
| <b>Total Grants &amp; Sponsorships</b>  |      | <u>221,950</u>          | <u>151,249</u>          |
| <b>Investment Income</b>                |      |                         |                         |
| Club Kelburn                            | 9    | 124,110                 | 129,524                 |
| Squash Dynamics                         | 10   | -                       | (46)                    |
| Interest                                |      | 26,805                  | 19,106                  |
| Other                                   |      | 26,022                  | -                       |
| <b>Total Investment Income</b>          |      | <u>176,937</u>          | <u>148,584</u>          |
| <b>TOTAL INCOME</b>                     |      | <u><u>1,614,748</u></u> | <u><u>1,343,243</u></u> |

This statement must be read in conjunction with the Notes to the Financial Statements and the Audit Report on Page 40



NEW ZEALAND SQUASH (INC)

## Consolidated Statement of Financial Performance

for the year ended 30 September 2006

|   | Note | 2006<br>\$       | 2005<br>\$       |
|---|------|------------------|------------------|
| <b>Expenditure</b>                              |      |                  |                  |
| <b>Management &amp; Operations</b>              |      |                  |                  |
| Governance                                      |      | 80,159           | 73,305           |
| Salaries & Fees                                 |      | 240,147          | 223,646          |
| Overheads                                       |      | 29,496           | 39,144           |
|   |      | <hr/>            | <hr/>            |
| Total Management & Operations                   |      | 349,802          | 336,095          |
| <b>Special Projects</b>                         |      |                  |                  |
| Promotion & Marketing                           |      | 92,806           | 29,330           |
| Regional Development                            |      | 31,839           | 17,187           |
| Education & Development                         |      | 282,753          | 234,915          |
| Gradings & Rankings                             |      | 2,121            | 9,118            |
| National Events                                 |      | 49,980           | 51,002           |
| High Performance Programme                      |      | 70,432           | 74,037           |
|   |      | 627,584          | 542,142          |
|   |      | <hr/>            | <hr/>            |
| <b>Total Expenditure before Depreciation</b>    |      | <b>1,507,317</b> | <b>1,293,826</b> |
| Provision for Doubtful Debts                    |      | 29,307           | 29,307           |
| Depreciation                                    |      | 46,377           | 44,423           |
| Loss on Disposal of Assets                      |      | -                | 150              |
|   |      | <hr/>            | <hr/>            |
| <b>Total Expenditure Including Depreciation</b> |      | <b>1,583,001</b> | <b>1,367,706</b> |
| <b>NET SURPLUS / (DEFICIT) FOR THE YEAR</b>     |      | <b>31,747</b>    | <b>(24,463)</b>  |

This statement must be read in conjunction with the Notes to the Financial Statements and the Audit Report on Page 40



NEW ZEALAND SQUASH (INC)

## Notes to the Financial Accounts

for the year ended 30 September 2006

### I - ACCOUNTING POLICIES

#### Statement of Accounting Policies

##### Differential Reporting

New Zealand Squash (Inc) is the New Zealand national sporting organisation responsible for the control, advancement and regulation of the game of squash throughout New Zealand. New Zealand Squash (Inc) is incorporated under the Incorporated Societies Act 1908.

The Association qualifies for differential reporting as it is not publicly accountable and does not qualify as "large", as defined within the New Zealand Institute of Chartered Accountants framework for differential reporting. The entity has taken advantage of all the differential reporting exemptions available to it.

##### Measurement Base

The accounting principles recognised as appropriate for the measurement and reporting of earnings and financial position on an historical cost basis have been followed. Accrual accounting is used to match income and expenditure.

##### Specific Accounting Policies

The following specific accounting policies which materially affect the measurement of financial performance and of financial position have been applied:

##### Operating Leases

Operating lease payments, where the lessors effectively retain substantially all the risks and benefits of ownership of the leased items, are recognised in the determination of operating profit in equal instalments over the term of the lease (refer Note 11).

##### Stock

Stock has been valued at the lower of cost or net realisable value. Due allowance has been made for slow moving stock.

##### Goods & Services Tax

The financial statements have been prepared on a GST exclusive basis.

##### Fixed Assets

All fixed assets are recorded at cost less accumulated depreciation to date. Depreciation has been provided at the maximum rates permitted by the Income Tax Act 2004.

##### Investments

Investments are loans advanced to clubs for renovations and development and are stated at cost (refer Note 4).

##### Changes in Accounting Policies

There have been no changes in accounting policies. All policies have been applied on a basis consistent with those used in previous years.



## 2 - INVENTORY COMMITMENTS

No inventories are specifically and separately pledged as security for liabilities. Inventory is subject to retention of title clauses.

## 3 – PAYMENTS IN ADVANCE

|                                  | 2006          | 2005          |
|----------------------------------|---------------|---------------|
| ACC Levy                         | 1,432         | 1,084         |
| Commonwealth Games (Mar 2006)    | -             | 2,584         |
| Computer Expenses                | 900           | 1,350         |
| Insurance                        | 10,881        | 9,938         |
| Venue Hire                       | 5181          | 5,411         |
| World Mens (Dec 2006)            | -             | 5,062         |
| World Juniors (Jul 2006)         | -             | 10,000        |
| World Squash Meeting             | 3,847         | 4,606         |
| <b>Total Payments in Advance</b> | <b>22,241</b> | <b>40,035</b> |

## 4 - INVESTMENTS

|   | 2006   | 2005    |
|---|--|---------|
| Herne Bay Ponsonby Rackets Club (Inc)   | 20,000   | 20,000  |
| Advancement Date :                      | 12 June 1996   |         |
| Terms :                                 | Original Term Five Years increased to 9 1/2 Years                                |         |
| Repayment Date :                        | Original Date of Repayment 12 June 2001<br>extended to 31 December 2007          |         |
| Interest Rate :                         | 10% per annum  |         |
| Security :                              | The advance is covered by an "Instrument by way of Security" dated 7 August 1996 |         |
| National Squash Centre Charitable Trust | 293,073  | 293,073 |
| Advancement Date :                      | 31 October 2001  |         |
| Terms :                                 | Original Term Five Years increased to 9 Years                                    |         |
| Repayment Date :                        | Original Date of Repayment 31 October 2006<br>extended to 31 October 2010        |         |
| Interest Rate :                         | 4.5% per annum   |         |
| Security :                              | Unsecured  |         |

New Zealand Squash views the above loan of \$293,073 as a strategic investment in the long term future development of squash. The Board has extended the repayment date of this loan to October 2010.

No interest has been charged since the inception of the advance.

**5 - FIXED ASSET & DEPRECIATION SCHEDULE**

| Description             | Cost             | Opening<br>Book Value | Additions<br>(Disposals) | Depreciation  | Accumulated<br>Depreciation | Closing<br>Book Value |
|-------------------------|------------------|-----------------------|--------------------------|---------------|-----------------------------|-----------------------|
| Trophies                | 500              | 500                   |                          |               |                             | 500                   |
| Motor Vehicles          | 66,438           | 42,180                |                          | 7,891         | 42,749                      | 23,689                |
| Plant, Equip & Fittings | 237,991          | 86,155                | 9,728                    | 22,970        | 180,690                     | 67,029                |
| Computer Software       | 21,657           | 7,464                 | -                        | 3,480         | 17,078                      | 4,579                 |
| Sports Equipment        | 235,622          | 75,550                | 3,088                    | 23,485        | 183,557                     | 55,153                |
| Buildings               | 775,399          | 106,668               | -                        | 13,462        | 682,193                     | 93,206                |
| Leasehold Improvements  | 254,054          | 35,646                | 17,373                   | 16,169        | 234,577                     | 36,850                |
| <b>Total</b>            | <b>1,591,661</b> | <b>354,163</b>        | <b>30,189</b>            | <b>87,457</b> | <b>1,340,844</b>            | <b>281,006</b>        |

**6 - SUNDRY ACCRUALS**

|                              | 2006          | 2005          |
|------------------------------|---------------|---------------|
| Other                        | 30,829        | 18,455        |
| Warranties                   | 5,000         | 5,000         |
| <b>Total Sundry Accruals</b> | <b>35,829</b> | <b>23,455</b> |

**7 - INCOME IN ADVANCE**

|   | 2006           | 2005           |
|---|----------------|----------------|
| SPARC                                   | 221,638        | 163,000        |
| NZ Community Trust - Grant              | -              | 70,000         |
| Sports Foundation                       | -              | 12,393         |
| Lion Foundation - Grants                | 7,848          | -              |
| Affiliation & Grading Levies in Advance | -              | 90             |
| <b>Total Income in Advance</b>          | <b>229,486</b> | <b>245,483</b> |

**8 - LEVIES & SUBSCRIPTIONS**

Affiliation levy income for the 2006 year was calculated on an SEM rate of \$28.75 plus GST.

**9 - CLUB KELBURN**

The following is a summarised Statement of Financial Performance for Club Kelburn for the year ended 30 September 2006 :

|                               | 2006           | 2005           |
|-------------------------------|----------------|----------------|
| <b>Income :</b>               |                |                |
| Trading Profits               | 115,424        | 104,651        |
| Court Fees                    | 208,258        | 188,935        |
| Gear Hire                     | 12,671         | 12,663         |
| Gym, Aerobics, Sauna & Sunbed | 163,038        | 203,024        |
| Sponsorship & Promotion       | 2,523          | 4,312          |
| Interest Received             | 10,424         | 6,473          |
| Other Income                  | 1,494          | 8,745          |
| <b>Total Income</b>           | <b>513,832</b> | <b>528,803</b> |





|                           | 2006           | 2005           |
|---------------------------|----------------|----------------|
| <b>Less : Expenditure</b> |                |                |
| Bank Fees                 | 3,861          | 3,948          |
| Depreciation              | 41,081         | 42,398         |
| Insurance                 | 8,847          | 8,915          |
| Management & Sundry       | 236,151        | 265,923        |
| Power & Utilities         | 38,895         | 30,867         |
| Rent                      | 40,000         | 31,750         |
| Repairs & Maintenance     | 20,887         | 15,478         |
| <b>Total Expenditure</b>  | <b>389,722</b> | <b>399,279</b> |
| <b>Net Surplus</b>        | <b>124,110</b> | <b>129,524</b> |

### 10 - SQUASH DYNAMICS

The following is a summarised Statement of Financial Performance for Squash Dynamics Limited for the year ended 30 September 2006 :

|  | 2006 | 2005 |
|--|------|------|
| <b>Net Contract Income</b>               | -    | -    |
| <b>Less : Expenses</b>                   |      |      |
| Bank Charges                             | -    | 46   |
| <b>Total Expenses</b>                    | -    | (46) |
| <b>Net Operating Surplus / (Deficit)</b> | -    | (46) |

Squash Dynamics is no longer trading, all funds have been transferred to NZ Squash and the bank accounts closed.

### 11 - CAPITAL & LEASE COMMITMENTS

Capital Commitments

There were no capital commitments as at Balance Date.

Operating Lease Commitments

Lease commitments under non-cancellable operating leases:

|              | 2006          | 2005          |
|--------------|---------------|---------------|
| Current      | 10,260        | 10,260        |
| Non-current  | 19,665        | 29,925        |
| <b>Total</b> | <b>29,925</b> | <b>40,185</b> |

The term of the operating lease is 60 months and expires 24 August 2009.

### 12 - CONTINGENT LIABILITIES

New Zealand Squash (Inc) had no contingent liabilities as at 30 September 2006.



**Squash New Zealand  
2006 Membership Returns**



## 2006 Membership Returns

| Club                 | Senior Men | Senior Women | Junior Men | Junior Women | Total       |
|----------------------|------------|--------------|------------|--------------|-------------|
| <b>NORTHLAND</b>     |            |              |            |              |             |
| Bream Bay            | 12         | 2            | 3          | 0            | 17          |
| Dargaville           | 27         | 15           | 29         | 12           | 83          |
| Kaitaia              | 48         | 36           | 24         | 10           | 118         |
| Kamo                 | 33         | 32           | 23         | 13           | 101         |
| Kerikeri             | 50         | 26           | 19         | 12           | 107         |
| Manaia               | 25         | 17           | 3          | 2            | 47          |
| Mangakahia           | 24         | 11           | 25         | 7            | 67          |
| Maungaturoto         | 20         | 10           | 9          | 2            | 41          |
| Mid Western          | 23         | 14           | 3          | 3            | 43          |
| Southern (Te Kopuru) | 24         | 15           | 0          | 0            | 39          |
| Waipu                | 13         | 2            | 8          | 3            | 26          |
| Wellsford            | 55         | 37           | 39         | 27           | 158         |
| Whangarei            | 115        | 54           | 20         | 3            | 192         |
| <b>TOTAL</b>         | <b>469</b> | <b>271</b>   | <b>205</b> | <b>94</b>    | <b>1039</b> |

### AUCKLAND

|                        |             |            |                  |            |             |
|------------------------|-------------|------------|------------------|------------|-------------|
| Auckland Squash Centre |             |            | <b>NO RETURN</b> |            |             |
| Belmont Park           | 41          | 11         | 17               | 11         | 80          |
| Browns Bay             | 252         | 77         | 205              | 142        | 676         |
| Devonport              | 57          | 7          | 34               | 7          | 105         |
| Eden Epsom             |             |            | <b>NO RETURN</b> |            |             |
| Ellerslie              |             |            | <b>NO RETURN</b> |            |             |
| Franklin               | 105         | 46         | 29               | 12         | 192         |
| Grammar                |             |            | <b>NO RETURN</b> |            |             |
| Henderson              |             |            | <b>NO RETURN</b> |            |             |
| Herne Bay              | 189         | 63         | 63               | 24         | 339         |
| Howick                 | 100         | 26         | 18               | 6          | 150         |
| Kumeu                  | 40          | 15         | 11               | 2          | 68          |
| Manurewa               |             |            | <b>NO RETURN</b> |            |             |
| Maramarua              | 17          | 13         | 0                | 0          | 30          |
| North Shore            | 244         | 99         | 23               | 12         | 378         |
| Panmure                | 147         | 61         | 35               | 20         | 263         |
| Papakura               | 54          | 15         | 11               | 6          | 86          |
| Red Beach              | 95          | 38         | 26               | 4          | 163         |
| Remuera                | 129         | 54         | 36               | 24         | 243         |
| RNZAF                  |             |            | <b>NO RETURN</b> |            |             |
| RNZ Navy               | 31          | 14         | 0                | 2          | 47          |
| Royal Oak              | 101         | 67         | 50               | 21         | 239         |
| Shepherds Park         |             |            | <b>NO RETURN</b> |            |             |
| Silverdale United      |             |            | <b>NO RETURN</b> |            |             |
| Te Kauwhata            |             |            | <b>NO RETURN</b> |            |             |
| Te Papapa              |             |            | <b>NO RETURN</b> |            |             |
| Titirangi              | 191         | 54         | 36               | 10         | 291         |
| Waiuku                 |             |            | <b>NO RETURN</b> |            |             |
| Warkworth              | 36          | 21         | 33               | 12         | 102         |
| Weymouth               |             |            | <b>NO RETURN</b> |            |             |
| <b>TOTAL</b>           | <b>1829</b> | <b>681</b> | <b>627</b>       | <b>315</b> | <b>3452</b> |

| Club             | Senior Men | Senior Women | Junior Men | Junior Women | Total       |
|------------------|------------|--------------|------------|--------------|-------------|
| <b>WAIKATO</b>   |            |              |            |              |             |
| Aria             |            |              |            |              |             |
| Cambridge        | 106        | 45           | 70         | 30           | 251         |
| Frankton         | 48         | 32           | 0          | 0            | 80          |
| Hamilton OB      | 33         | 25           | 1          | 0            | 59          |
| Hamilton         |            |              | NO RETURN  |              |             |
| Huntly           | 24         | 16           | 10         | 9            | 59          |
| Leamington       | 34         | 25           | 19         | 7            | 85          |
| Lugton Park      | 68         | 33           | 3          | 3            | 107         |
| Mercury Bay      | 17         | 17           | 2          | 0            | 36          |
| Morrinsville     |            |              | NO RETURN  |              |             |
| Ngaruawahia      | 21         | 10           | 1          | 1            | 33          |
| Otorohanga       | 43         | 25           | 9          | 5            | 82          |
| Paeroa           | 36         | 13           | 6          | 6            | 61          |
| Ruakura          |            |              | NO RETURN  |              |             |
| Taumarunui       |            |              | NO RETURN  |              |             |
| Taupiri          | 18         | 12           | 0          | 0            | 30          |
| Te Aroha         | 39         | 48           | 15         | 8            | 110         |
| Te Awamutu       | 71         | 53           | 25         | 25           | 174         |
| Te Kuiti         | 19         | 12           | 4          | 0            | 35          |
| Te Pahu          |            |              | NO RETURN  |              |             |
| Te Rapa          | 32         | 33           | 13         | 9            | 87          |
| Thames           | 45         | 28           | 13         | 24           | 110         |
| United Matamata  | 49         | 31           | 15         | 7            | 102         |
| Waihi            |            |              | NO RETURN  |              |             |
| Waikato Hospital |            |              | NO RETURN  |              |             |
| Whangamata       | 23         | 7            | 5          | 6            | 41          |
| <b>TOTAL</b>     | <b>726</b> | <b>465</b>   | <b>211</b> | <b>140</b>   | <b>1542</b> |

**BAY OF PLENTY**

|                 |             |            |            |            |             |
|-----------------|-------------|------------|------------|------------|-------------|
| Edgecumbe       | 63          | 35         | 39         | 15         | 152         |
| Galatea         | 22          | 19         | 2          | 1          | 44          |
| Geyser City     | 78          | 37         | 17         | 11         | 143         |
| Katikati        | 38          | 17         | 22         | 6          | 83          |
| Kawerau         | 12          | 10         | 3          | 4          | 29          |
| Lakes High      | 59          | 20         | 1          | 1          | 81          |
| Marist          | 23          | 14         | 1          | 0          | 38          |
| Mount Maunganui | 106         | 53         | 13         | 4          | 176         |
| Putaruru        |             |            | NO RETURN  |            |             |
| Reporoa         | 26          | 26         | 10         | 6          | 68          |
| Rotorua Waikite | 32          | 12         | 4          | 4          | 52          |
| Taneatua        | 36          | 32         | 8          | 2          | 78          |
| Taupo           | 83          | 30         | 8          | 1          | 122         |
| Tauranga        | 161         | 91         | 129        | 46         | 427         |
| Te Puke         | 76          | 61         | 54         | 47         | 238         |
| Tokooroa        | 50          | 49         | 34         | 28         | 161         |
| Waikite Valley  | 23          | 10         | 9          | 4          | 46          |
| Whakatane       | 137         | 59         | 19         | 10         | 225         |
| <b>TOTAL</b>    | <b>1025</b> | <b>575</b> | <b>373</b> | <b>190</b> | <b>2163</b> |



| Club                    | Senior Men  | Senior Women | Junior Men | Junior Women | Total       |
|-------------------------|-------------|--------------|------------|--------------|-------------|
| <b>EASTERN</b>          |             |              |            |              |             |
| Gisborne HSOB           | 32          | 19           | 11         | 5            | 67          |
| Hastings                | 69          | 31           | 9          | 6            | 115         |
| Havelock North          | 102         | 50           | 19         | 17           | 188         |
| Hawkes Bay LT           | 85          | 47           | 33         | 11           | 176         |
| Hawkes Bay              | 93          | 52           | 26         | 16           | 187         |
| Squash Surf City        | 82          | 47           | 19         | 23           | 171         |
| Takapau                 | 21          | 16           | 9          | 1            | 47          |
| Waerenga-a-hika         |             |              | NO RETURN  |              |             |
| Waikare                 | 11          | 4            | 0          | 1            | 16          |
| Waipukurau              | 11          | 8            | 7          | 1            | 27          |
| <b>TOTAL</b>            | <b>506</b>  | <b>274</b>   | <b>133</b> | <b>81</b>    | <b>994</b>  |
| <hr/>                   |             |              |            |              |             |
| <b>CENTRAL</b>          |             |              |            |              |             |
| Ashhurst Pohangina      | 26          | 13           | 10         | 6            | 55          |
| Dannevirke              | 39          | 26           | 37         | 14           | 116         |
| Eltham                  | 26          | 12           | 1          | 4            | 43          |
| Feilding                | 54          | 29           | 33         | 14           | 130         |
| Foxton                  | 24          | 15           | 2          | 6            | 47          |
| Hawera                  | 76          | 50           | 12         | 9            | 147         |
| Inglewood               | 44          | 21           | 13         | 9            | 87          |
| Kawaroa Park            | 154         | 64           | 32         | 14           | 264         |
| Lévin                   | 43          | 19           | 26         | 7            | 95          |
| Ohakea                  | 19          | 1            | 0          | 0            | 20          |
| Ohakune                 | 48          | 33           | 35         | 19           | 135         |
| Okato                   | 44          | 27           | 35         | 12           | 118         |
| Opunake                 |             |              | NO RETURN  |              |             |
| Patea                   | 18          | 9            | 4          | 8            | 39          |
| Puketoi                 | 10          | 7            | 0          | 1            | 18          |
| Rangitikei              | 38          | 17           | 18         | 8            | 81          |
| River City (TCOB)       | 24          | 21           | 7          | 4            | 56          |
| Squash Palmerston North | 277         | 109          | 128        | 47           | 561         |
| Stratford               | 34          | 21           | 12         | 3            | 70          |
| Taihape                 | 46          | 23           | 10         | 7            | 86          |
| Tararua                 | 30          | 24           | 13         | 12           | 79          |
| Turangi                 |             |              | NO RETURN  |              |             |
| Waitara                 | 28          | 19           | 12         | 2            | 61          |
| Wanganui                | 124         | 50           | 23         | 16           | 213         |
| <b>TOTAL</b>            | <b>1226</b> | <b>610</b>   | <b>463</b> | <b>222</b>   | <b>2521</b> |

| Club                | Senior Men  | Senior Women | Junior Men | Junior Women | Total       |
|---------------------|-------------|--------------|------------|--------------|-------------|
| <b>WELLINGTON</b>   |             |              |            |              |             |
| Celtic              | 27          | 19           | 3          | 1            | 50          |
| Club Kelburn        | 10          | 0            | 0          | 0            | 10          |
| Collegians          | 104         | 52           | 44         | 13           | 213         |
| Fraser Park         | 59          | 19           | 12         | 4            | 94          |
| Island Bay          | 57          | 36           | 20         | 10           | 123         |
| Kapiti              | 64          | 34           | 22         | 11           | 131         |
| Khandallah          | 103         | 36           | 33         | 9            | 181         |
| Mana                | 82          | 26           | 36         | 11           | 155         |
| Marlborough College | 40          | 38           | 15         | 10           | 103         |
| Marlborough         | 53          | 30           | 28         | 25           | 136         |
| Martinborough       | 17          | 18           | 6          | 4            | 45          |
| Masterton           | 59          | 33           | 25         | 16           | 133         |
| Mitchell Park       |             |              | NO RETURN  |              |             |
| Motueka             | 32          | 18           | 5          | 3            | 58          |
| Nelson              |             |              | NO RETURN  |              |             |
| Northern            | 28          | 13           | 8          | 6            | 55          |
| Otaki               |             |              | NO RETURN  |              |             |
| Red Star            | 50          | 22           | 23         | 15           | 110         |
| Squash @ Upper Hutt | 101         | 34           | 56         | 13           | 204         |
| Takaka              |             |              | NO RETURN  |              |             |
| Tawa                | 122         | 61           | 56         | 17           | 256         |
| The Thorndon Club   | 93          | 22           | 44         | 7            | 166         |
| Waikanae            | 20          | 9            | 9          | 1            | 39          |
| Waimea              | 69          | 25           | 31         | 10           | 135         |
| Wainuiomata         | 38          | 20           | 11         | 10           | 79          |
| Woodbourne          | 9           | 4            | 1          | 0            | 14          |
| <b>TOTAL</b>        | <b>1199</b> | <b>549</b>   | <b>477</b> | <b>186</b>   | <b>2411</b> |



| Club                  | Senior Men  | Senior Women | Junior Men | Junior Women | Total       |
|-----------------------|-------------|--------------|------------|--------------|-------------|
| <b>CANTERBURY</b>     |             |              |            |              |             |
| Amberlèy              | 38          | 17           | 5          | 9            | 69          |
| Burnside              | 130         | 72           | 65         | 30           | 297         |
| Cashmere              | 25          | 13           | 0          | 0            | 38          |
| Christchurch Football | 138         | 60           | 42         | 18           | 258         |
| Christchurch          | 122         | 62           | 15         | 8            | 207         |
| Ellesmere             | 10          | 4            | 0          | 0            | 14          |
| Greymouth             | 62          | 23           | 12         | 6            | 103         |
| Hokitika              | 11          | 4            | 0          | 0            | 15          |
| Hoon Hay              | 40          | 26           | 17         | 6            | 89          |
| Kaiapoi               | 30          | 31           | 16         | 7            | 84          |
| Kaikoura              | 50          | 50           | 11         | 7            | 118         |
| Lincoln               | 14          | 10           | 9          | 1            | 34          |
| Linwood               | 34          | 18           | 2          | 0            | 54          |
| Lyttelton             | 6           | 0            | 0          | 0            | 6           |
| Malvern               | 31          | 17           | 39         | 18           | 105         |
| Mount Pleasant        | 49          | 17           | 19         | 4            | 89          |
| Oxford                | 10          | 16           | 7          | 3            | 36          |
| Rangiora              | 51          | 15           | 9          | 1            | 76          |
| Riccarton             | 43          | 9            | 0          | 0            | 52          |
| Richmond Wkmns Club   | 95          | 44           | 33         | 7            | 179         |
| Squashways            | 26          | 0            | 0          | 0            | 26          |
| Sumner                | 30          | 10           | 0          | 0            | 40          |
| Westport              | 39          | 18           | 6          | 4            | 67          |
| <b>TOTAL</b>          | <b>1084</b> | <b>536</b>   | <b>307</b> | <b>129</b>   | <b>2056</b> |

**MIDLANDS**

|                 |            |            |           |           |            |
|-----------------|------------|------------|-----------|-----------|------------|
| Ashburton       | 90         | 26         | 39        | 10        | 165        |
| Excelsior       | 20         | 7          | 18        | 10        | 55         |
| Kurow Rugby     | 30         | 12         | 7         | 4         | 53         |
| Mackenzie Rugby | 20         | 17         | 2         | 8         | 47         |
| Oamaru          | 52         | 17         | 10        | 6         | 85         |
| Timaru OB       | 23         | 9          | 2         | 0         | 34         |
| Timaru          | 60         | 17         | 17        | 4         | 98         |
| Waimate         | 15         | 9          | 3         | 0         | 27         |
| <b>TOTAL</b>    | <b>310</b> | <b>114</b> | <b>98</b> | <b>42</b> | <b>564</b> |

| Club                 | Senior Men | Senior Women | Junior Men | Junior Women | Total       |
|----------------------|------------|--------------|------------|--------------|-------------|
| <b>OTAGO</b>         |            |              |            |              |             |
| Alexandra            | 36         | 16           | 18         | 8            | 78          |
| Clutha               | 30         | 15           | 26         | 7            | 78          |
| Cromwell             | 45         | 24           | 11         | 8            | 88          |
| Logan Park           | 63         | 40           | 9          | 5            | 117         |
| Maniototo            | 17         | 15           | 5          | 4            | 41          |
| North End            | 42         | 18           | 1          | 2            | 63          |
| Omakau               | 23         | 14           | 6          | 2            | 45          |
| Otago                | 70         | 28           | 21         | 11           | 130         |
| Otago University     | 155        | 90           | 21         | 12           | 278         |
| Pirates              | 43         | 23           | 27         | 9            | 102         |
| Queenstown           |            |              | NO RETURN  |              |             |
| Roxburgh & Districts | 15         | 8            | 2          | 1            | 26          |
| Southern             | 32         | 19           | 0          | 3            | 54          |
| Sunnyvale            | 48         | 2            | 0          | 0            | 50          |
| Taieri               | 96         | 51           | 16         | 4            | 167         |
| Toko                 | 26         | 12           | 2          | 1            | 41          |
| Wanaka               | 56         | 21           | 8          | 2            | 87          |
| <b>TOTAL</b>         | <b>797</b> | <b>396</b>   | <b>173</b> | <b>79</b>    | <b>1445</b> |

**SOUTHLAND**

|                          |            |            |            |           |            |
|--------------------------|------------|------------|------------|-----------|------------|
| Balfour                  | 25         | 25         | 5          | 2         | 57         |
| Central Southland        | 32         | 18         | 13         | 13        | 76         |
| Clinton Community        | 45         | 28         | 16         | 18        | 107        |
| Dipton                   | 24         | 9          | 0          | 0         | 33         |
| Fiordland                | 22         | 21         | 2          | 1         | 46         |
| Gore Town & Country      |            |            | NO RETURN  |           |            |
| Heriot                   |            |            | NO RETURN  |           |            |
| Makarewa                 | 36         | 14         | 8          | 3         | 61         |
| Mossburn                 |            |            | NO RETURN  |           |            |
| Nightcaps                | 16         | 8          | 3          | 0         | 27         |
| Otautau                  | 25         | 26         | 1          | 0         | 52         |
| Riversdale               | 10         | 20         | 1          | 0         | 31         |
| Riverton                 | 10         | 12         | 10         | 8         | 40         |
| Squash City Invercargill | 98         | 46         | 40         | 6         | 190        |
| Tapananui & Districts    | 24         | 23         | 20         | 18        | 85         |
| Waiaū                    | 5          | 12         | 11         | 4         | 32         |
| Waikaia                  | 24         | 14         | 0          | 0         | 38         |
| Waikaka                  | 20         | 23         | 10         | 7         | 60         |
| Wyndham                  | 11         | 10         | 1          | 0         | 22         |
| <b>TOTAL</b>             | <b>427</b> | <b>309</b> | <b>141</b> | <b>80</b> | <b>957</b> |



## **2007 Squash New Zealand National Events Calendar**

---

|                  |  |
|------------------|--|
| March 30-April 1 | <b>NZ Junior Open</b> - North Shore, Auckland  |
| June 1-3         | <b>Cousins Shield &amp; Mitchell Cup</b> - Remuera, Auckland   |
| June 14-17       | Central Squash Open & <b>WISPA</b> - Kawaroa Park, New Plymouth  |
| June 21-24       | <b>WISPA</b> - Venue TBC   |
| June 29-July 1   | <b>NZ Masters Club Teams Event</b> - Wanganui  |
| Jun 30-July 2    | <b>South Island Age Groups</b> - Burnside, Christchurch  |
| July 6-8         | <b>North Island Age Groups</b> - Hamilton  |
| July 20-22       | <b>Super Champs 2007</b> - District Graded Teams Event   |
| Aug 8-12         | <b>PSA</b> - Venue TBC   |
| Aug 15-19        | <b>PSA</b> - Venue TBC   |
| Aug 17-19        | <b>NZ Secondary School Champs</b> - Nelson   |
| Sept 7-11        | <b>NZ National Championships</b> - Individuals (Sept 7 - 9)<br>Teams (Sept 10 - 11) - Palmerston North                                 |
| Sept 12-15       | <b>Super Champs 2007</b> -<br>B Grade: Whakatane,<br>C Grade: Auckland,<br>D Grade: Timaru,<br>E Grade: Taumaranui,<br>F Grade: Hawera |
| Sept 27-Oct 3    | <b>NZ Junior National Age Group Championships</b> - Individuals (Sept 27-30),<br>Teams (Oct 1-3) - Hawkes Bay                          |
| Oct 19-25        | <b>NZ Masters National Championships</b> - North Shore, Auckland   |
| Nov 16-17        | <b>Squash NZ AGM</b> - Rotorua   |

The dates and venues for the **North & South Island Senior Championships** have not yet been confirmed



PO Box 21 781, Henderson, Auckland  
Telephone: 09 815 0970, Facsimile: 09 815 0971  
Email: [squashnz@squashnz.co.nz](mailto:squashnz@squashnz.co.nz) Website: [www.squashnz.co.nz](http://www.squashnz.co.nz)

