



**SQUASH NEW ZEALAND  
ANNUAL REPORT 2001**



# SQUASH NEW ZEALAND ANNUAL REPORT 2001

<b>Squash New Zealand Officials 2000 - 2001</b>	2
<b>Squash New Zealand Honours Board 2000 - 2001</b>	3
<b>Chairman's Review</b>	4
<b>Chief Executive's Report</b>	6
<b>High Performance Report</b>	7
<b>2001 Season Results</b>	9
<b>Grading and Statistics Report</b>	19
<b>Refereeing Report</b>	21
<b>National Squash Centre Trust</b>	24
<b>Squash Dynamics</b>	25
<b>Club of the Year - Royal Oak Racquets Club</b>	26
<b>Club Kelburn</b>	27
<b>Masters Report</b>	28
<b>Junior - Youth Report</b>	30
<b>Audit Report</b>	32
<b>Consolidated Statement of Financial Position</b>	33
<b>Consolidated Statement of Financial Performance</b>	34
<b>Notes to the Financial Accounts</b>	36
<b>Membership Returns 2001</b>	39

**Squash New Zealand.** PO Box 21 781, Henderson, Auckland.  
 Telephone: 64-9 836 2217. Facsimile: 64-9-836 0309  
 Email: [squashnz@squashnz.co.nz](mailto:squashnz@squashnz.co.nz) Website: [www.squashnz.co.nz](http://www.squashnz.co.nz)

# Squash New Zealand Officials 2000-2001

## PATRON

Dame Susan Devoy

## EXECUTIVE COUNCIL

Dave Bassett (Chairman), Gerard De Courcy, Jan McAra, Jim O'Grady, Debra Rodgerson,  
John Sangster

## PROGRAMME DIRECTORS

*Doubles:* Butch Gifford, *Grading & Statistics:* Steve Scott, *Junior/Youth:* Hank Scott,  
*Masters:* Gower Dallimore, *National Events:* Alan Simpson, *Refereeing:* Joss Urbahn

## SELECTORS:

*Junior:* Neil Lewis, Nicky Dunlop, Wayne Werder (Convenor). *Senior:* Jenny Norton, Matt Taylor,  
Wayne Werder (Convenor). *Masters:* Judy Cooper, Lawrence Skurr, Gower Dallimore (Convenor).

## NATIONAL STATISTICIANS:

*Women:* Vivienne Brumby, *Men:* Peter Singer

## PLAYER REPS:

Louise Crome, Willie Bicknell

## NATIONAL OFFICE

*Chief Executive:* David Knowles / Ang Becroft, *Administration Manager:* Vivienne Brumby  
*High Performance Manager:* Wayne Werder, *National Coach:* Dave Clarke,  
*Receptionist:* Jan Lewis, *Contract Accountant:* Glen Mossman

## HON.SOLICITOR:

Michael Sumpter

## AUDITOR

McGregor, Bailey & Co

EDEN EPSOM MEN'S E GRADE  
TEAM NATIONAL CHMAPIONS  
2001  
L to R: Peter Reeves (Manager),  
Vaughan Wilson (Coach), Eugene  
Kwok, Jeremy Kenealy, Andrew  
Grover, Justin Sayes, Aidean Kenealy,  
David Lockhart, Sven Barlev

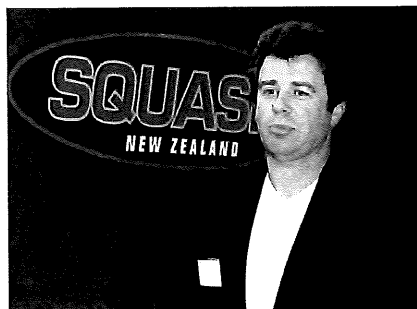


## Squash New Zealand Honours Board 2000-2001

<b>PERSONALITY OF THE YEAR</b>	Paul Steel	
<b>CLUB OF THE YEAR</b>	Royal Oak Racquets Club	
<b>MOST IMPROVED JUNIOR PLAYERS</b>		
Female	Joelle King	Leamington
Male	Oliver Johnston	Logan Park
<b>MOST IMPROVED SENIOR PLAYERS</b>		
Female	Jaclyn Hawkes	Otago Uni.
Male	Callum O'Brien	Royal Oak
<b>DEREK COOKE MEMORIAL TROPHY FOR REFEREEING</b>	Sandra Tinkler	Wellington
<b>SQUASH PLAYERS OF THE YEAR (Winners Of Revelation Series)</b>	Lara Petera	Herne Bay
	George Crosby	Thorndon
<b>NEW ZEALAND NATIONAL MEN'S SQUASH CHAMPION</b>	Paul Steel	Whakatane
<b>NEW ZEALAND NATIONAL WOMEN'S SQUASH CHAMPION</b>	Leilani Joyce	Hamilton
<b>NEW ZEALAND SENIOR INTER-DISTRICT TEAMS CHAMPIONSHIP</b>		
Men		Bay of Plenty
Women		Auckland
<b>NEW ZEALAND JUNIOR MEN'S SQUASH CHAMPION</b>	Callum O'Brien	Royal Oak
<b>NEW ZEALAND JUNIOR WOMEN'S SQUASH CHAMPION</b>	Kylie Lindsay	Matamata
<b>NEW ZEALAND MASTERS INTER-DISTRICT TEAM CHAMPIONSHIP</b>		Canterbury
<b>NEW ZEALAND MASTERS CHAMPIONSHIP</b>		
35+ Men	Mike Roberts	Kawarua Park
Women	Katherine Austin	Whakatane
40+ Men	Steve McCarroll	Christchurch
Women	Karen Walton	Richmond
45+ Men	Lawrence Skurr	Christchurch
Women	Carol Chard	Kawarua Park
50+ Men	Steve Kardos	Whakatane
Women	Kaye Jackson	Royal Oak
55+ Men	Richard Purser	Remuera
Women	Jenny Webster	Eden Epsom
60+ Men	Don Preston	Christchurch
65+ Men	Trevor Coulter	Frankton
70+ Men	Maurice Peters	Remuera

*George Crosby, New Zealand Team Member & Revelation Series Winner with New Zealand Women's Champion & World No. 2 Leilani Joyce*





## Chairman's Review

This has been a year of extraordinary challenges and I would like to start by paying my tribute to our Council. I like to think they usually work studiously in the background and deserve the accolades last but this year our organisation has worked through a number of challenging issues, thanks to a very professional and committed Council.

David Knowles resigned from the helm and it was with a huge debt of gratitude that we farewelled David.

When he began as CEO four years ago he quickly and professionally assessed the financial predicament we faced at a national level and set about what he then called a "hard pruning". David not only set the organisation back on its feet but also has implemented a number of pivotal programmes that will I'm sure return dividends in years to come.

David's departure triggered the hunt for a successor and it is with a great deal of pride that Squash New Zealand has its first woman CEO, Ang Becroft. While it is still early days for Ang we wish her every success in the position and welcome the fresh energy she brings to the game. The transition has not been easy (this type of upheaval never is) and I wish to thank Vivienne, Wayne, Jan and Doug for their patience and efforts in holding things together.

In spite of the change-over we are able to report a number of very exciting accomplishments. The greatest achievement was the opening in Auckland of the National Squash Centre by the Right Honourable Helen Clarke. This is a milestone of significance for our sport which is certain to bear fruit in the years ahead. Not only do we have a showcase, state-of-the-art facility but I genuinely believe this is the beginning of a new era for Squash. This is the facility of the future. This is the look of the modern game and I am hopeful we will see more of these wonderful facilities built as quickly as possible. Neven Barbour has, with the National Squash Centre Board chaired by Bruce Davidson,

made this huge project a reality and I congratulate all involved. Squash Auckland as a key partner has unselfishly supported the project, and can clearly see the benefits a facility of this nature will bring to this district long term.

The National Squash Centre will be the new home of squash and I hope the training ground for many, many more world champions. It will also be the workshop and home base for our new National Coach Dave Clarke. His employment in New Zealand is another of this years significant achievements.

We welcome Dave and his wife Becky from the U.K. and it has been a real coup to uplift Britain's Coach of the Year. With the assistance of the Sports Foundation, our elite players and coaches in general will benefit hugely from Dave's appointment and 2002 is shaping to be an exciting year.

At a public level the Sport has enjoyed great exposure as Leilani grabbed the world number one slot and excelled again at an international level. Our other women players, including Carol Owens, Shelley Kitchen and Lara Petera, earned a huge amount of respect on the international scene and in the next few years I predict will see some explosive and tense games from these four. Again our thanks to Wayne Werder for his efforts with our top players. Wayne's new role as Operational Manager supporting Dave Clarke gives us two exceptional professionals heading our elite programme.

This is now year three of our Squash Development Officer network, an initiative developed in partnership with districts. Questions are being asked as to how we can generate greater growth and set new directions with this team. Squash has invested over half million dollars to this resource and this coming year will determine the future of this joint venture. I know Ang is very keen to work with the districts in achieving better results.

Having championed the magazine for many years it was a blow to see this very effective communications vehicle come to an end. The costs

became prohibitive and advertising support more and more difficult to secure. In its place however is our website, an electronic notice board that continues to increase popularity and its hit rate. These web-based communications are clearly the format for the future.

While on the subject of cost I would like to raise what I call 'the paradox of paradise' or the struggle to deliver more for less. We have not increased our subscriptions for 8 years and with the financial base of most clubs being far from secure, this option of funding growth becomes less and less likely. So while we all enjoy the static nature of subscription, in real terms the cake shrinks at a time we desperately need funds to grow the sport. Alternative funding options require innovative answers as the conventional models struggle to deliver. It is not a dilemma we face alone. Other sporting codes suffer, as do many of our affiliated clubs.

There are a number of novel funding alternatives that we will be exploring and as with any change there will be those who may balk at these new ideas. I ask you all to keep an open mind and stay focussed on something that is more important than our own personal beliefs, something that is more important even than the future of our own individual clubs. The future of the game is dependent on the growth of player numbers and our ability to make available modern, attractive, and convenient facilities to anyone who wishes to play it.

In conclusion, I have been privileged to work with hundreds of passionate squash players around the country, who like me, wish to hand on to our

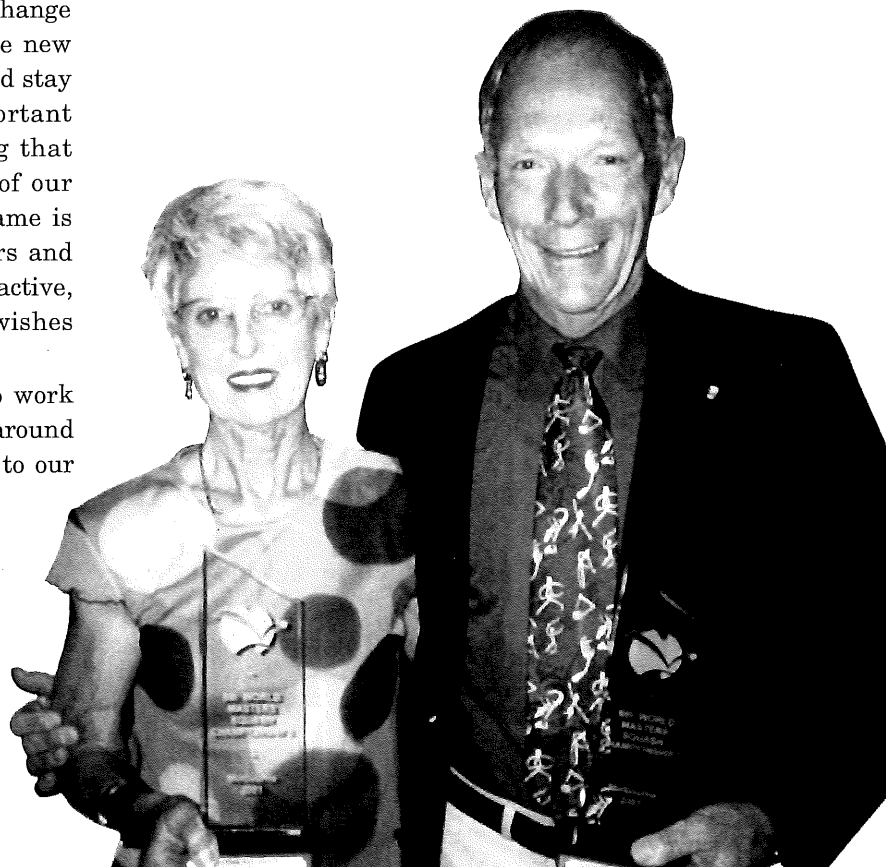
communities lively vibrant facilities where anyone can enjoy this fantastic game.

The long-term future of our game is not certain and it will take an extraordinary effort by us all to secure a future for squash, but we have some extraordinary talent, skill and experience and more importantly we have many who desperately want to make it happen. But it can only happen from the ground up and I assure you, the national body will work exceedingly hard with those who share this vision.

Let's make squash the game of the new millennium.

**DAVE BASSETT**

**Chairman, Squash New Zealand**



*WORLD MASTERS CHAMPIONS 2001  
Jenny Webster 55+ and Richard Purser 55+*



## Chief Executive's Report

The first eight weeks have been enlightening having visited several clubs in most districts through out New Zealand, and attended several tournaments and prizegivings. The profile of the sport is increasing along with player numbers and the opening of the National Squash Centre gives us a National Flagship, which is critical to squash going forward.

The team at the Henderson Office has been of great assistance starting with Vivienne Brumby, whose knowledge has been invaluable from accounts to the background on the game, plus a quick lesson in refereeing. Wayne Werder has juggled a number of roles as he moves into a new role as Operations Manager. Jan Lewis tends to the phone and effectively organises everyone. Doug Flint is one of best volunteers I've come across, a man who loves the game. A new addition to the team has been Dave Clarke. The new National Coach, who will turn a lot of our plans into actions, once he has stamped his mark on it. Dave brings with him a wealth of knowledge and experience.

The Squash Development network has seen changes as Karen Read, Mike Coggan and Kent Tristram have moved on. The loss of these key operators was offset by the arrival of Cheryl Te Kani-McQueen, Kevin Mason and Nicole Gorman. One of the key initiatives I'm working on is the Squash Development Officers network - making sure that Squash in New Zealand sees a return on its investment. I firmly believe the Squash Development Officers network is a long-term investment if we are to get significant results but changes need to be made in terms of key performance indicators, performance measurement and development if Squash is to continue to make advances.

Sponsorship and funding are key issues that we face and an area in which a lot of my focus will be. As a sport and organisation we are seriously under-funded. I know there will be good news in this area in the next six months.

In my short time in the job there have been some key people that have assisted me over the last few weeks that I must thank. Dame Susan Devoy for helping with sponsorship, Susie Simcock for her knowledge on the World scene and the team on the Executive Council, and the Directors that are scattered across the country. Rob Walker and Neven Barbour who's passion for the game is legendary. Programme Directors, Steve Scott, Joss Urbahn, Gower Dallimore, Hank Scott and Alan Simpson carry out important work as volunteers. A very big thank you to you all and I look forward to your continued support and assistance.

In making my way around the country it is very clear squash people are passionate and committed to the game and how it should be developed, which makes the future a fantastic opportunity for everyone. The challenge is moving everyone in the same direction - in pursuit of our goal to "Grow the Game". I strongly believe Squash in New Zealand is up to it and can become a stronger force as time goes on.

**ANG BECROFT**  
Chief Executive



## High Performance Report

### FOUNDATIONS IN PLACE

On the surface in 2001, it may look as if little progress has been made. A deeper look however, confirms that it was indeed a year of building foundations. Foundations that are now providing an opportunity for us to really advance both our High Performance and Coach Education programmes.

### HIGH PERFORMANCE

Earlier this year a review panel was established to canvas the squash and sporting community in order to reach a united strategy on High Performance. The report entitled "Reaching Higher" made three major recommendations.

The first was a call for Greater Definition. Clearer structures were called for and as a result 2002 will see the introduction of a three National Squad structure with clear entry and exit criteria. The second recommendation was the need for Clearer Accountabilities and that more responsibility had to fall on key individuals for results. As a result the appointment process for a National Coach was undertaken, and Englishmen Dave Clarke was appointed. The third recommendation was for increased District Involvement. In order for the National programmes to be successful, the Districts have to be successful. The identification of key district personnel and the need for clear pathways will be essential for the success of the High Performance programme.

The recommendations and subsequent actions, combined with the recently completed National Squash Centre, means that Squash New Zealand now has the personnel, a plan, and a place from which to launch the new look High Performance programme. The opportunities are exciting for both players and coaches.

### NATIONAL COACHING PANEL

Earlier this year a National Coaching Panel was set up in order to complement the work of the High Performance program and to recognise the vitally important role of coaching. The Panel was established to review current practise, and to

propose a plan and pathway for coaching in New Zealand. Eight key areas of work were established, in which various work is underway including increasing resources and the designing of new coach education options. The work of the Panel will assist by providing a pathway not only in High Performance but also will assist the Squash Development Officers in their objective to grow the game, through this key area of retention.

### 2001 SEASON

Once again New Zealand's top women players dominated the year. Leilani Joyce again proved to be a great ambassador for the game, while continuing her domination of the women's circuit. Her win at the Hong Kong Open was one highlight. It was a year when 2000 World Champion Carol Owens announced her intentions to represent New Zealand. Carol has figured in the squash scene in NZ for a number of years now and her continued involvement is a welcome bonus. Shelley Kitchen was the big improver this year, moving to a career high 17 ranking in the world.

Her stunning wins at the Malaysian and Singapore Opens are evidence of her potential.

### WORLD CHAMPIONSHIPS

The NZ Senior Women's team finished a very credible third at the World Teams Championships late in 2000, pushing eventual winners England to the limit in the semi finals. The NZ men finished 17th in the Men's Teams

World Championships in Melbourne. A debatable new pool system meant that although NZ were seeded 15th they were not given the chance to compete for their seeding. The New Zealand Junior Women's Team finished a credible 7th in Belgium, a result that showed the value of sending a development team to the 1999 world champs. A group of junior men eligible for the 2002 World Junior Men's Championships travelled to Australia to compete in the Australian Junior Selection series, and collected three titles.

In the men, Paul Steel reached a major milestone





*NZ JUNIOR GIRLS TEAM - WORLD CHAMPIONSHIPS, MALAYSIA JULY 2001  
L to R: Larissa Stephenson, Jaclyn Hawkes, Kylie Lindsay, Catherine McLeod, Philippa Beams (Manager)*

when he equalled Dame Susan Devoy's record of ten National titles. The circuit showed continued signs of new blood with Callum O'Brien reaching the semi-finals of the Senior Nationals. A healthy group of juniors is developing and will benefit from the new High Performance programme. New Zealand has been starved of top male players for some years now, but there are signs of a promising future ahead.

The senior Revelation series and the Bluebird Junior series were well supported in 2001. Record numbers of juniors were seen chasing the National tournaments, which is always a positive sign. Retaining these players in the clubs during their 20's is the major challenge and one that will ultimately determine the survival of our sport.

The Revelation series saw the opportunity provided to our top players to compete in seven nation-wide tournaments. The workings of the WISPA rankings and the strength of our women's rankings meant the women's draws were run as local events. The entries of Leilani Joyce and Carol Owens meant competition was world class, and the Nationals final was arguably one of the best women's games ever seen in New Zealand. The men's series included three PSA accredited tournaments, which attracted over 30 overseas entries. It was interesting to view how the hosts clubs and districts used (or missed) the opportunity to promote the game through such events. Provided with some of the world's best players, clubs like

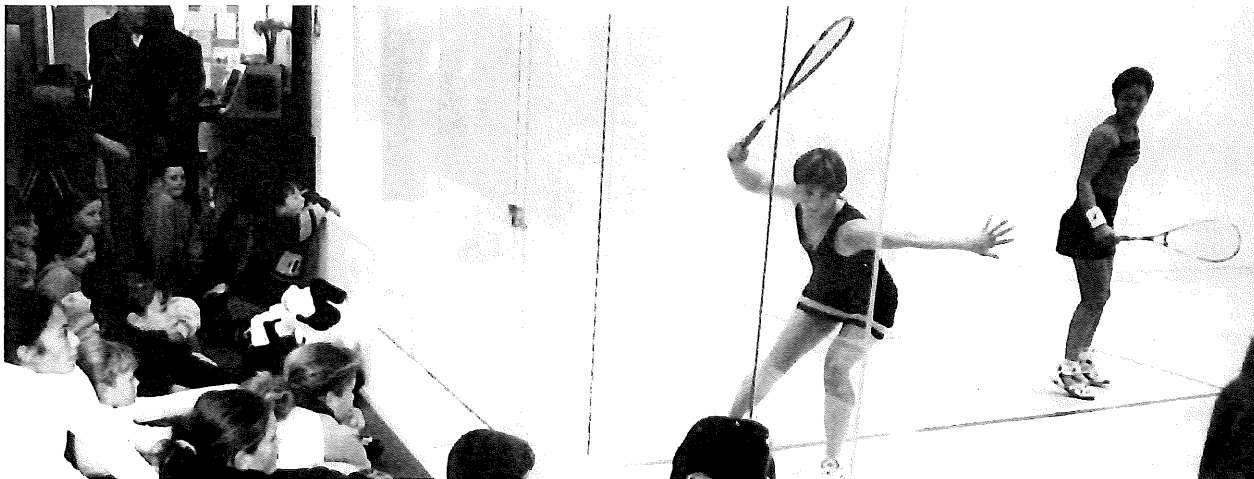
Khandallah used the opportunity to promote the game to not only their existing members but also to hundreds of potential members - a classic example of growing the game. Celebrity nights, international squash and full galleries provided a marvellous spectacle for squash.

The relationship with Australia continued this year. The Trans-Tasman Junior test series was run as a build up to the World Junior Championships. The three test series held in Auckland, was won by Australia, and provided both teams with much needed international competition. In July, a Trans-Tasman doubles series was held involving sixteen players from each country, including eight men ranked in the world's top 30. The series combined several days of mixed, men's and women's doubles, which culminated in a test series. New Zealand was very competitive in the mixed and women's sections, which provides some encouraging signs for the 2002 Commonwealth Games.

As always, the administration of sport is at times a frustrating challenge. Limited pools of resources mean tough decisions have to be made, and without the passion of key volunteers the sport simply couldn't be administered. These volunteers include the selectors, programme directors, parents, and coaches to name a few. I would like to thank all those who have contributed and I look forward to a productive and successful 2002 season.

**WAYNE WERDER**  
High Performance Manager

## 2001 Season Results



*New Zealand Women's Championship Final between Carol Owens & Leilani Joyce*

### REVELATION SERIES - LIGHT ICE WAIKATO OPEN - Hamilton 18 - 20 May

**Final**

Allan Crome	(Remuera)	Beat	Daniel Murphy	(Khandallah)	15/17 15/12 12/15 15/6 17/14
Lara Petera	(Herne Bay)	beat	Hayley King	(Herne Bay)	9/5 9/3 9/1

### REVELATION SERIES - LION FOUNDATION AUCKLAND OPEN - Remuera 25-27 May

**Final**

George Crosby	(Thorndon)	beat	Allan Crome	(Remuera)	15/12 15/13 8/15 15/14
Leilani Joyce	(Hamilton)	beat	Shelley Kitchen	(Herne Bay)	9/4 9/3 9/6

### REVELATION SERIES - BEACH ST BAR/ SABANNA HOLDINGS NORTH ISLAND OPEN - Tauranga 1-3 June

**Final**

George Crosby	(Thorndon)	beat	Allan Crome	(Remuera)	15/11 15/17 17/16 11/15 15/6
Shelley Kitchen	(Herne Bay)	beat	Sarah Cook	(Sumner)	9/7 9/10 5/9 10/8 9/3

### REVELATION SERIES - SIETEL WELLINGTON OPEN - Khandallah 3-5 August

**Final**

Ben Garner	(England)	beat	Chris Ryder	(England)	15/7 15/11 15/5
Leilani Joyce	(Remuera)	beat	Shelley Kitchen	(Herne Bay)	6/9 9/4 9/4 9/2

### REVELATION SERIES - SCENIC CIRCLE HOTELS CANTERBURY OPEN 10-12 August

**Final**

Raj Nanda	(Australia)	beat	Ben Garner	(England)	9/15 15/6 5/15 15/10 15/12
Leilani Joyce	(Remuera)	beat	Shelley Kitchen	(Herne Bay)	9/0 9/3 9/2

### REVELATION SERIES - CHAMPIONS OF OTAGO/CABLEWAYS TAVERN SOUTH ISLAND OPEN - Otago 17-19 August

**Final**

Lee Jemmett	(England)	beat	Mike Robberds	(Australia)	15/10 15/12 15/10
Lara Petera	(Herne Bay)	beat	Angie Toal	(Hamilton)	9/7 9/6 9/4

**AUCKLAND JUNIOR GIRLS**

**TEAM NATIONAL**

**CHAMPIONS 2001**

*Back Row L to R: Kerry Torrie  
(asst. Manager), Rachel McLeod,  
Catherine McLeod, Kaye  
Jackson (manager)*

*Front Row: Priscilla Wildsmith,  
Larissa Stephenson*



**REVELATION SERIES - AWAPUNI MOTOR HOTEL NATIONAL CHAMPIONSHIPS - Palmerston Nth 31 Aug - 2 Sept  
Final**

Paul Steel	beat	Glen Wilson	9/3 9/1 6/9 9/4
Leilani Joyce	beat	Carol Owens (Eden Epsom)	3/9 9/7 7/9 9/6 9/2
Most Improved Male		Callum O'Brien (Royal Oak)	Vogel Rosebowl
Most Improved Female		Jaclyn Hawkes (Otago Uni.)	Aust. Womens Plate
Services to Refereeing		Sandra Tinkler (Wellington)	Derek Cook Memorial Cup
Player Series - Men		George Crosby (Thorndon)	Squash NZ Cup
Player Series - Women		L Petera (Herne Bay)	Khandallah Tray

**REVELATION SERIES - Final Points**

<b>Men</b>		<b>Women</b>	
1. George Crosby (Thorndon)	12625	1. Lara Petera (Herne Bay)	14050
2. Allan Crome (Remuera)	12325	2. Angie Toal (Hamilton)	12650
3. Callum O'Brien (Royal Oak)	10750	3. Jaclyn Hawkes (Otago)	11450
4. Nathan Sneyd (Thorndon)	9275	4. Shelley Kitchen (Herne Bay)	10300
5. Shaun Sansom (Herne Bay)	9125	5. Michel Galloway (Tauranga)	10200
6. Terry Shaw (Herne Bay)	8725	6. Sally Hawkes (Remuera)	9975
7. Paul Tuffin (Herne Bay)	8675	7. Leilani Joyce (Remuera)	8800
8. Kent Darlington (Wanganui)	7450	8. Kylie Lindsay (Hamilton)	8250
9. Matt Taylor (Herne Bay)	7100	9. Jenny Gearing (Logan Park)	8050
10. Glen Wilson (Khandallah)	6825	10. Karen Roberts (Hamilton)	7975

**SENIOR INTER-DISTRICT TEAMS EVENT - Palmerston North 3-4 September**

<b>Men</b>	<b>Women</b>
1. Bay of Plenty	1. Auckland
2. Auckland	2. Northland
3. Wellington	3. Waikato
4. Waikato	4. Bay of Plenty
5. Canterbury	5. Central
6. Central	6. Otago
7. Southland	7. Canterbury

**STIRLING SPORTS NORTH ISLAND AGE GROUPS - Whangarei 7-9 April**

**Under 19 Final**

Callum O'Brien (Royal Oak)	beat	Shaun Sansom (Kawaroa Park)	3/1
Jaclyn Hawkes (Otago Uni)	beat	Kylie Lindsay (Matamata)	3/0

**Under 17 Final**

Campbell Grayson (Titirangi)	beat	Hayden Manson (Nightcaps)	3/2
Amy Alison (Waipu)	beat	Rachel McLeod (North Shore)	3/0

**Under 15 Final**

Chris McEldowney (Okato)	beat	Reece Williams (Kawaroa Park)	3/1
Jackie Laurenson (Ohakune)	beat	Katherine McDonald(Squash City)	3/2

**Under 13**

Ryan Peters (Hamilton)	beat	Evan Williams (Tawa)	3/1
Joelle King (Leamington)	beat	Samantha Mewett(Waipu)	3/0

**Under 11**

Taylor Horton (Papakura)	beat	Bradley Wagstaff (Te Puke)	3/0
Danielle Watene (Whakatane)	beat	Lana Harrison (Papakura)	3/0

**ACTION SPORTS SOUTH ISLAND AGE GROUP CHAMPIONSHIPS - Timaru 29 June-2 July**

**Under 19 Final**

Anthony McLeod (North Shore)	beat	Steve Backe-Hansen(Alexandra)	3/0
Leah Stockman (Hamilton)	beat	Courtney Gunn (Richmond)	3/1

**Under 17 Final**

Oliver Johnston (Logan Park)	beat	Hayden Manson (Nightcaps)	3/0
Rachel McLeod (North Shore)	beat	Amy Alison (Waipu)	Countback

**Under 15 Final**

Chris McEldowney (Okato)	beat	Reece Williams (Upper Hutt)	3/2
Jackie Laurenson (Ohakune)	beat	Courtney Sim (Kawaroa Park)	3/0/3/2

*New Zealand Mens Champion, Paul Steel (right) accepting trophy from Past Champion Charlie Waugh*



**Under 13 Final**

Brett Clark (Ch/ch Football)	beat	Tini Moeke (Collegians)	3/1
Joelle King (Leamington)	beat	Ashlee Hall (Whakatane)	3/0

**Under 11 Final**

Byron Peehi (Taihape)	beat	Cameron Manson (Nightcaps)	3/1
Danielle Watene (Whakatane)	beat	Stephanie Chambers (Rangiora)	3/1

**HEAD NATIONAL AGE GROUP CHAMPIONSHIPS - Napier 21-24 September****Under 19 Final**

Callum O'Brien (Royal Oak)	Beat	Graeme Wilson (Khandallah)	3/0
Kylie Lindsay (Matamata)	beat	Jaelyn Hawkes (Logan Park)	3/0

**Under 17 Final**

Oliver Johnston (Logan Park)	beat	Hayden Manson (Nightcaps)	3/2
Priscilla Wildsmith (Browns Bay)	beat	Colleen Katene (Geysers City)	3/1

**Under 15 Final**

Chris McEldowney (Okato)	beat	Reece Williams (Upper Hutt)	3/1
Jackie Laurenson (Ohakune)	beat	Courtney Sim (Okato)	3/0

**Under 13 Final**

Josh Thom (Waiuku)	beat	Evan Williams (Tawa)	3/1
Joelle King (Leamington)	beat	Samantha Mewett (Waipu)	3/0

**Under 11 Final**

Taylor Horton (Papakura)	beat	Bryce Redman (Hawkes Bay)	3/0
Abbey Beaumont (Browns Bay)	beat	Paige Benioni (Panmure)	3/1

Most Improved Junior Male	Oliver Johnston (Logan Park)	Junior Management Trophy
Most Improved Junior Female	Joelle King (Leamington)	Junior Management Trophy
Best Player On & Off Court	Callum O'Brien (Royal Oak)	Mackwell Trophy
Best District Overall	Auckland	Gifford Trophy

**JUNIOR INTER-DISTRICT TEAMS EVENT - Napier 25-26 September**

Boys	Girls
1 Wellington	1 Auckland
2 Central Districts	2 Bay of Plenty
3 Waikato	3 Waikato
4 Bay of Plenty	4 Northland
5 Auckland	5 Wellington
6 Canterbury	6 Southland
7 Northland	7 Central Districts
8 Otago	8 Hawkes Bay/Gisborne
9 Southland	9 Canterbury
10 Hawkes Bay/Gisborne	

**BLUEBIRD SERIES FINAL POINTS TABLE****Overall Champion**

1 Joelle King	U13	Leamington
2 Jackie Laurenson	U15	Ohakune
3 Danielle Watene	U11	Whakatane
4 Chris McEldowney	U15	Okato
5 Reece Williams	U15	Upper Hutt

**Under 19**

1. G Evans	Burnside	9400	1. C Gunn	Richmond	9850
2. M Knight	Kapiti	7300	2. L Stockman	Hamilton	9050
3. J Waugh	Te Aroha	6750	3. M Ackroyd	Kapiti	6900
4. A McLeod	North Shore	5600	4. K Lindsay	Matamata	6400
5=K Milne	Linwood	5100	5. J Hawkes	Otago Uni.	4200
5=R Easton	Foxton	5100			



**WAIRENGA-A-HIKA MEN'S D GRADE TEAM - NATIONAL CHAMPIONS**  
 Back Row L to R: Phil Higgins, Dean O'Connell, Adam Brodie, Mike Newman (Manager)  
 Front Row L to R: Hayden Swann, Daniel Newman, Craig Pritchard

**Under 17**

1. J Smith	Hoon Hay	10050	1. A Alison	Waipu	10500
2. J Brown	Christchurch	8000	2. K Houghton	Leamington	7950
3. K Atkinson	Hokitika	7500	3. K Douglas	Burnside	7500
4. S O'Malley	Hoon Hay	7100	4. S Lewis	Mangakahia	7000
5. M Bill	Morrinsville	7050	5. M Laurenson	Ohakune	6300

**Under 15**

1. C McEldowney	Okato	12600	1. J Laurenson	Ohakune	13000
2. R Williams	Upper Hutt	12300	2. C Sim	Okato	10100
3. B Lewis	Mangakahia	9400	3. T Hope	Kawerau	9500
4. H Tallott	Kaiapoi	9200	4. C McCaul	Upper Hutt	8900
5. J Campbell	Kaiapoi	7850	5. C Sincock	Alexandra	6950

**Under 13**

1. B Clark	Ch.Football	11200	1. J King	Leamington	13200
2. E Williams	Tawa	8400	2. A Watene	Whakatane	11100
3. S Martin	Tawa	7050	3. A Hall	Whakatane	10700
4. J Harrison	Papakura	5600	4. A Sincock	Roxburgh	6900
5. J Wagstaff	Te Puke	5500	5. T McEldowney	Okato	6400

**Under 11**

1. B Peehi	Taihape	11900	1. D Watene	Whakatane	12700
2. T Hope	Kawerau	7850	2. P Benioni	Panmure	8000

3. B Redman	Hawkes Bay	7300	3. L Harrison	Papakura	7700
4. S Lewis	Mangakahia	6750	4. S Laurenson	Ohakune	7100
5. T Horton	Papakura	6600	5. B Sim	Okato	6800

**NZ SECONDARY SCHOOLS CHAMPIONSHIPS - Hamilton 13 August**

**Finals**

Auckland Grammar	Beat	Gisborne Boys High	3/2
Gisborne Girls High	Beat	Westlake Girls High	3/2

**GRADED TEAMS EVENT FINALS**

Cousins Shield - Thorndon	Beat	Remuera	3/2
Mitchell Cup - Remuera	Beat	Herne Bay	3/1

**Men**

B Grade	Khandallah
C Grade	Whakatane
D Grade	Waerenga-A-Hika
E Grade	Eden Epsom
F Grade	Manurewa

**Women**

Royal Oak
Royal Oak
Rotorua Waikite
North Shore
Hawkes Bay

**MASTERS CLUB TEAM EVENT - Hastings LT Club 20 August**

Taupo	Beat	Lugton Park	4/3
-------	------	-------------	-----

**CROWDED HOUSE BAR & CAFÉ MASTERS NATIONAL CHAMPIONSHIPS - Kawaroa Park 19-26 October**

**35 - 39**

M Roberts	(Kawaroa Park)	Beat	Rhys Powell (Kawaroa Park)	3/0
K Austin	(Whakatane)	Beat	Margaret Reynolds (Tawa)	

**40 - 44**

S McCarroll	(Christchurch)	Beat	M Waldin (Browns Bay)	3/1
K Walton	(Richmond)	Beat	E Tahata (Manurewa)	3/1

**45- 49**

L Skurr	(Christchurch)	Beat	R Clay (Khandallah)	3/1
C Chard	(Kawaroa Park)	Beat	F Walker (Christchurch)	3/0



*New Zealand Womens Champion, Leilani Joyce (right) accepting trophy from Past Champion Nancy New*

**50 - 54**

S Kardos	(Whakatane)	Beat	D Mason	(Collegians)	3/0
K Jackson	(Royal Oak)	Beat	J Edwards	(Christchurch)	3/0

**55 - 59**

R Purser	(Remuera)	Beat	I Gunthorpe	(Remuera)	3/0
J Webster	(Eden Epsom)	Beat	J Cooper	(Lugton Park)	3/2

**60 - 64**

D Preston	(Christchurch)	Beat	B Bark	(Herne Bay)	3/1
-----------	----------------	------	--------	-------------	-----

**65 - 69**

T Coulter	(Frankton)	Beat	R Savage	(Thorndon)	3/1
-----------	------------	------	----------	------------	-----

**70 plus**

M Peters	(Remuera)	Beat	Bryan Novak	(Kawaroa Park)	
----------	-----------	------	-------------	----------------	--

**MASTERS INTER-DISTRICT TEAMS EVENT - Ashburton 24-26 October**

- 1 Canterbury
- 2 Auckland
- 3 Waikato
- 4 Bay of Plenty
- 5 Central

**WORLD SENIOR WOMEN'S INDIVIDUAL CHAMPIONSHIPS - Edinburgh November, 2000****Individual Results**

<b>Leilani Joyce</b>	First Round	Beat	Omneya Abdel Kawy (Egypt)	9/2 9/1 9/1
	Second Round	Beat	Vanessa Atkinson (Netherlands)	9/2 5/9 9/5 9/5
	Quarter Finals	Beat	Suzanne Horner (England)	9/2 9/6 9/0
	Semi Finals	Beat	Natalie Grainger (England)	9/6 9/3 9/10 4/9 9/5
	Final	Lost to	Carol Owens (Australia)	9/7 9/3 8/10 6/9 1/9

<b>Shelley Kitchen</b>	First Round	Lost to	Pamela Nimmo (Scotland)	9/7 4/9 4/9 8/10
------------------------	-------------	---------	-------------------------	------------------

**Sarah Cook** WSF Challenge

First Round	Beat	Eman El Amir (Egypt)	9/1 9/3 9/7
Second Round	Beat	Aisling Blake (Ireland)	9/4 9/3 9/2
Semi Final	Beat	Lara Petera (New Zealand)	8/10 9/4 9/3 9/5
Final	Beat	Ivy Pochoda (USA)	9/1 9/5 9/2

<b>Lara Petera</b>	Qualifying Round	Lost to	Cheryl Beaumont (England)	4/9 9/2 5/9 7/9
	WSF Challenge			
	First Round	Beat	Susan Darymple (Scotland)	9/6 9/10 6/9 9/5 9/7
	Second Round	Beat	Corinne Castets (France)	2/9 9/5 9/1 9/7
	Semi Final	Lost to	Sarah Cook (New Zealand)	10/8 4/9 3/9 5/9

**WORLD SENIOR WOMEN TEAM RESULTS - Finished 3rd****New Zealand 3 - Spain 0**

Leilani Joyce	beat	Natalia Meneu	3/0
Shelley Kitchen	beat	Elisabeth Sado	3/0
Sarah Cook	beat	Laia Sans	3/0

**New Zealand 3 - France 0**

Leilani Joyce	beat	Isabelle Stoehr	3/1
Shelley Kitchen	beat	Corinne Castets	3/0
Lara Petera	beat	Astrid Gamory	3/0

**New Zealand 3 - Hong Kong 0**

Leilani Joyce	beat	Rebecca Chiu	3/0
Lara Petera	beat	Karen Lau	3/0
Sarah Cook	beat	Christina Mak	2/0

**New Zealand 2 - South Africa 1**

Leilani Joyce	beat	Claire Nitch	3/0
Shelley Kitchen	lost to	Angelique Clifton-Parks	0/3
Sarah Cook	beat	Sjeanne Cawdry	3/0

**Semi Final****New Zealand 1 - England 2**

Leilani Joyce	beat	Linda Charman	3/0
Shelley Kitchen	lost to	Tania Bailey	0/3
Sarah Cook	lost to	Stephanie Brind	1/3

**3rd/4th Playoff****New Zealand 2 - Egypt 1**

Leilani Joyce	beat	Salma Shabana	3/0
Shelley Kitchen	lost to	Maha Zein	2/3
Sarah Cook	beat	Omneya Abdel Kawy	3/0



**TRANS TASMAN JUNIOR GIRLS TEST SERIES****1st Test - North Shore 15 May****NZ 0 AUSTRALIA 5**

Priscilla Wildsmith lost to Cherelle Kelley 1-3

Danielle Nant lost to Georgina Davis 1-3

Larissa Stephenson lost to Amelia Pittock 0-3

Catherine McLeod lost to Kasey Brown 0-3

Jaclyn Hawkes lost to Lisa Camillieri 0-3

**2nd Test - Remuera 16 May****NZ 1 AUSTRALIA 4**

Priscilla Wildsmith lost to Cherelle Kelley 0-3

Catherine McLeod lost to Lisa Camillieri 0-3

Jaclyn Hawkes lost to Kasey Brown 2-3

Danielle Nant lost to Amelia Pittock 0-3

Larissa Stephenson beat Georgina Davis 3-1

**3rd Test - Eden Epsom 17 May****NZ 1 AUSTRALIA 4**

Catherine McLeod lost to Georgina Davis 0-3

Danielle Nant lost to Kasey Brown 0-3

Jaclyn Hawkes lost to Amelia Pittock 0-3

Larissa Stephenson lost to Lisa Camillieri 0-3

Natasha Fowles beat Cherelle Kelley 3-1

**WORLD JUNIOR GIRL'S CHAMPIONSHIPS - Penang, Malaysia July 2001****Individual Results****Kylie Lindsay**

1st Round Bye

2nd Round Beat

Kate Prapisarda (USA)

3-1

3rd Round Lost

Kathrin Rohrmuller (Germany)

1-3

Classic Plate 1st Rd Bye

2nd Rd lost

Sara Badr (Egypt)

0-3

**Danielle Nant**

1st Round Beat

Shari Marges (Netherlands)

3-0

2nd Round lost

Felicity Goodall (Australia)

0-3

Classic Plate 1st Rd lost

Karen Lau (Hong Kong)

0-3

**Catherine McLeod**

1st Round Lost

Joshna Chinappa (India)

0-3

Plate 1st Round Bye

2nd Round Beat

Kirsty McPhee (England)

3-0

3rd Round Beat

Kyla Grigg (Canada)

3-1

Quarter Finals Beat

Melanie Scarlato (Switzerland)

3-0

Semi Finals lost

Lauren Siddall (England)

1-3

**Jaclyn Hawkes**

1st Round beat

Rachita Vora (India)

3-0

2nd Round beat

Connie Choi (Hong Kong)

3-1

3rd Round lost

Manuela Zehnder (Switzerland)

1-3

**TEAM RESULTS - Finished 7th****New Zealand 0 Malaysia 3**

Kylie Lindsay lost to Nicol David 0-3

Larissa Stephenson lost to Sally Looi 1-3

Jaclyn Hawkes lost to Tricia Chuah 0-3

**New Zealand 2 Canada 1**

Jaclyn Hawkes beat Ruchika Kuma 3-1

Kylie Lindsay beat Jacqui Inward 3-0

Catherine McLeod lost to Kyla Grigg 0-3

**New Zealand 1 USA 2**

Kylie Lindsay lost to Michelle Quibell 0-3

Catherine McLeod lost to Alexandra Pearson 1-3

Jaclyn Hawkes beat Amy Gross 2-0

**New Zealand 1 Germany 2**

Jaclyn Hawkes beat Sandra Ziemelis 3-0

Kylie Lindsay lost to Kathrin Rohrmuller 1-3

Larissa Stephenson lost to Jessica Reese 0-3

**Play Off for 7th - 8th****New Zealand 2 India 1**

Catherine McLeod beat Supriya Balsekar 3-1

Kylie Lindsay lost to Joshna Chinappa 2-3

Jaclyn Hawkes beat Vaidehi Reddy 3-1



**MANUREWA F GRADE MEN'S TEAM**

(L to R) Back Row:

Colin Moody (coach), Terry Dennis, Keith Rollo, Rob Livingstone (Manager)

Front Row:

Colin Ratcliffe, Don Livingstone, Dean Gray, Hewa Adams

**WORLD SENIOR MEN'S TEAMS CHAMPIONSHIPS - Melbourne, Australia October 2001**

**New Zealand 0 France 3**

Paul Steel lost to Thierry Lincou 0/3  
 Daniel Sharplin lost to Renan Lavigne 0/3  
 George Crosby lost to Jean Michel Arcucci 2/3

**New Zealand 0 - Egypt 3**

Paul Steel lost to Omar El Borolossy 0/3  
 Daniel Sharplin lost to Amr Shabana 1/3  
 George Crosby lost to Mohammed Abbas 0/3

**New Zealand 2 USA 1**

Paul Steel lost to Damian Walker 1/3  
 Daniel Sharplin beat Richard Chin 3/1  
 George Crosby beat Preston Quick 3/0

**17-24 playoff**

**New Zealand 3 Mexico 0**

Paul Steel beat Eric Galvez 3/1  
 Daniel Sharplin beat Armando Zarazua 3/0  
 George Crosby beat Octavio Montero 2/0

**17-20 Playoff**

**New Zealand 3 Austria 0**

Paul Steel beat Gerhard Schedlbauer 3/1  
 Daniel Sharplin beat Markus Rossler 3/0  
 George Crosby beat Andreas Fuchs 2/1

**17-18 playoff**

**New Zealand 2 Hong Kong 1**

Paul Steel lost to Faheem Khan 0/3  
 Daniel Sharplin beat Vincent Cheung 3/0  
 George Crosby beat Jackie Lee 2/1

**TRANS TASMAN MASTERS TESTS - Melbourne 1-5 October**

**1st Test - Kooyong Tennis Club 1 October**

35+	G Duberley lost to W Miller	7/9 9/5 9/10 9/1 4/9
	K Austin lost to C Cooper	6/9 10/8 4/9 3/9
40+	B Williams beat M Brown	9/0 9/3 9/2
	S Egan lost to S Baker	3/9 3/9 8/10
45+	L Skurr lost to T Spark	7/9 1/9 0/9
	M Galloway lost to L Cann	9/1 5/9 6/9 3/9
50+	T Naughton lost to B Cook	8/10 4/9 9/10
	K Jackson lost to R King	8/10 0/9 10/8 1/9
55+	R Purser lost to M Samblebe	7/9 8/10 8/10
	J Webster beat R Stevens	9/0 9/2 9/0
60+	D Preston lost to F Howell	5/9 9/5 1/9 0/9
	J Roberts beat J Wilson	9/2 9/3 9/3

Australia won 9 matches to 3

**2nd Test - Melbourne Sports & Aquatic Centre 3 October**

35+	G Duberley beat W Miller	9/6 4/9 9/5 10/8
	K Austin beat C Cooper	9/5 6/9 9/4 9/2
40+	B Williams beat M Brown	9/6 9/4 9/5
	S Egan lost to S Baker	2/9 6/9 8/10
45+	L Skurr lost to T Spark	0/9 7/9 6/9
	M Galloway lost to L Cann	10/8 7/9 6/9 9/10
50+	T Naughton lost to B Cook	6/9 1/9 4/9
	K Jackson lost to R King	2/9 0/9 2/9
55+	R Purser beat to M Samblebe	4/9 9/6 9/7 5/9 10/9
	J Webster beat R Stevens	9/0 9/4 9/0
60+	D Preston lost to F Howell	0/9 1/9 0/9
	J Roberts beat J Wilson	9/4 9/7 9/4

Matches ties 6 All - Australia won 22 games to 19

**3rd Test - Kooyong Tennis Club 5 October**

35+	G Duberley beat W Miller	8/10 5/9 9/2 9/4 10/8
	K Austin lost to C Cooper	7/9 9/5 7/9 5/9
40+	B Williams beat M Brown	9/1 9/5 5/9 9/3
	S Egan lost to S Baker	4/9 9/2 1/9 0/9
45+	L Skurr lost to T Spark	5/9 6/9 2/9
	M Galloway lost to L Cann	7/9 5/9 2/9
50+	T Naughton beat B Cook	9/10 9/3 9/2 9/5
	K Jackson lost to R King	6/9 9/4 6/9 2/9
55+	R Purser lost to M Samblebe	9/2 5/9 9/6 4/9 5/9
	J Webster beat R Stevens	9/2 9/4 9/0
60+	D Preston lost to F Howell	2/9 7/9 1/9
	J Roberts beat J Wilson	9/5 9/6 9/1

Australia won 7 matches to 5



ABBEY BEAUMONT  
Browns Bay  
U11 National Champion 2001

## Grading & Statistics Report

The Grading System is the major part of the National Club Member Register. At the end of September 2001 it contained 17,275 graded players (2000 -16,906). In addition, the national register contained a further 7040 leisure / casual club members (2000 - 6,936), giving a combined total of 24,315 "registered" club members (2002 - 23,842). This total number is however believed to be substantially below real club membership numbers as indications are that many clubs are still not providing Squash NZ with complete details of their "leisure" members.

The 2001 season has for the first time in a number of years shown an increase (even if small) in competitive player numbers and this tends to support the trend of clubs reporting increased competitive participation towards the end of last season and early this season. (Oct-1998 - 18,588, Oct-1999 - 17,741; Oct-2000 - 16,906; Oct-2001 - 17,275). The increase in competitive numbers this season is probably due to the increase number of social / leisure of the last couple of season now taking up the "competitive challenge"

As is the case with all sports, the number of persons participating in the sport squash has a direct bearing on the ability of the sport at all levels to attract outside support and revenue by way of sponsorships and grants from the various sources from which such funds are available.

As has been said many times before, it cannot be stressed strongly enough that all clubs must ensure that all of their "members", regardless of membership category or the manner in which the users of club courts access the facilities, must be registered with the club, the district and Squash New Zealand. The maintenance of full and complete membership registers of all persons who use club facilities on a regular basis is of immense benefit to the sport, particularly at club level.

The operation of the grading system during the 2001 season saw the continuation of the operational policies of the previous seasons, the prime intention

of which has been to gradually achieve a more even spread of players across the B to F grades.

### Total Players by Grades (Men & Women combined).

	Oct 2001	% Oct 00	Nov. 99	Nov. 98	Nov. 97	Nov. 96	Nov.95	Nov.94		
A1	28	0.1	26	26	26	29	25	24	20	.1%
A2	179	1.0	171	172	191	163	148	131	118	.6%
B	2413	14.0	2339	2379	2358	2276	2053	1779	877	4.5%
C	3423	20.0	3410	3498	3560	3719	3765	3829	1558	8.1%
D	3466	20.0	3515	3755	4055	4396	4766	4989	3234	16.7%
E	4776	28.0	4628	5117	5502	5863	6247	6282	6242	32.3%
F	2990	17.0	2817	2535	2896	3054	2956	2677	7297	37.7%
	17,275		16,906	17,482	18,588	19,500	19,960	19,711	19,346	

Graded player numbers across all grades continue to show that the policy under which the grading system has been operated for the past few seasons has had the desired effect. The 1994 "bottom end bulge" with 70% of players in E & F grades, has been substantially reduced, with both C and D grade each now having 20% of the players, with B grade having 14% and E grade 28%. This has been achieved via the very careful adjustment and "loading" of the points scales within the grading system to promote the "regular winners" and thereby provide them with a reasonably rapid upward progression.

The increased A2, B and C grade numbers of the past few season has continued to have a positive effect on the number of player entries in A, B and C grade tournaments. However it was disappointing to see the drop in the number of teams entering the National Graded Club Teams event at a district level in 2001 - 370 teams, against 379 in 2000.

Grading committee policy is to continue to maintain the even spread of "club" players across the range of B to E grades.

Competitive age-group statistics over the past eight years provide some interesting figures:

**HAWKES BAY F GRADE  
WOMEN NATIONAL  
CHAMPIONS**

*Back Row L to R: Carol Allan, Sandy Titter, Kim O'Shaughnessy, Losa Silvester, Sandra Ennor  
Front Row L to R: Kim Nichola, Donna Ransfield*



	2001	2000	1999	1997	1993
Seniors (19 to 34 years)	5,963 34.5%	5,913 35.8%	6,611 37.3%	8,022 40.6%	9,600 45.5%
Masters (35 and over)	9,430 54.6%	9,225 54.0%	9,477 53.4%	10,031 50.7%	10,240 48.5%
Juniors (Under 19)	1,882 10.9%	1,768 10.2%	1,655 9.3%	1,728 8.7%	1,255 6.0%
Totals	17,275	16,906	17,743	19,781	21,095

Numerically, the senior, masters numbers have increased this season and in overall terms the percentage change to each category is less than 1%. On brighter note, juniors have now increased both numerically and percentage wise for the past two seasons. While this in itself is pleasing to see, regrettably the number of juniors entering the sport still appears to be insufficient to replace the natural loss of seniors and masters. There still needs to be concern over what is obvious in most clubs - an overall lack of competitive juniors and thus an aging competitive adult squash population! As in the past years, it cannot be stressed strongly enough that juniors are the long term future of the sport and every effort must be made to attract and retain new junior players. It is interesting to note that Auckland have their own separate junior grading list for the competitive beginners and as of September this year there were 479 number on the junior list. This junior list is separate to the main Auckland list.

The publishing of the Grading List on the Squash NZ website continued during the past season and

this continues to be well received by players, clubs, and administrators.

The "prompt collection of results" continues to be the major concern with the overall operation and management of the grading system. Possible improvements to this area of the grading system are being evaluated and we are seeking a viable means by which to provide clubs and districts with the ability to replace a large proportion of the current "paper based" workload with a computer based application.

A major change introduced late this season was the move to publication of the Grading List on the Squash NZ website twice a month. This will continue for the 2002 season and the Grading List will be published twice a month, from March to December 2002. The publication dates will be the 1<sup>st</sup> and 15<sup>th</sup> of each month. The increased frequency of publication for 2002 will require some changes to the manner in which the Grading System is managed at all levels of the sport.

The Squash Grading System continues to be the backbone of competitive squash in New Zealand and its successful operation is due to the considerable input of volunteer time and effort by club and district statisticians. Thanks must be extended to them for their work which benefits individual players and the sport of squash as a whole.

**STEVE SCOTT**  
Director - Gradings & Statistics

## Refereeing Report

With 2001 being proclaimed Year of the Volunteer we got the year off to a good start with a workshop at the Annual General Meeting with well known rugby referee Paddy O'Brien as our guest speaker. Paddy had many tips for us in our role as officials.

2 workshops were held one in Otago and one in Bay of Plenty. This was under our new format involving 2 weekends. The Otago one produced 4 new District referees from Otago, Southland, Midlands and Canterbury. Wellington and Central held workshops of their own with the result of several people on their way too becoming District referees. Gisborne also held a weekend course and upskilled some of their people.

This year we provided referees for the Revelation series, this was successful and gave the opportunity for our referees to see overseas players in action.

Chas Evans and Peter Highsted, our two World referees have had a busy time. Chas went to Penang in July and they both went to Hong Kong in August. At time of writing they are both attending a Referees school in Melbourne and then refereeing at the Men's World Teams event. We were also fortunate to be able to send 4 other referees (Doug Flint, Nichol Taylor, Gavin Seigel & Paul Sneyd) to this workshop and I'm sure they will bring back a wealth of knowledge, which they will be able to impart on the rest of us.

Jan McAra qualified as a National Referee this year; it will be good to have someone representing the deep south.

A major loss to our ranks this year was the departure of Gavin Whyte to Australia. Gavin was instrumental in setting up our manuals and his expertise in the many areas of refereeing will be greatly missed.

My thanks must go to all the referees, who have given their time so freely, they are all volunteers but never turn down a request for help.

**JOSS URBAHN**

Director - Refereeing

### NEW ZEALAND REFEREES

#### World:

Chas Evans, Peter Highsted

#### National 1:

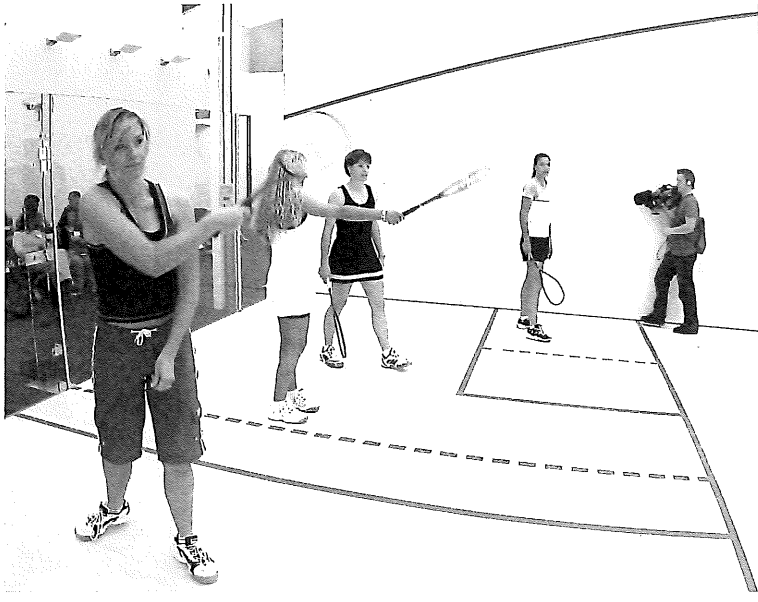
Michael Allred, Pauline Boyle, Doug Flint, Gary Hutchison, Nigel Lloyd, Gavin Seigel, Nichol Taylor, Sandra Tinkler.

#### National 2:

David Conza, Tim Cook, Ray Foster, Kay Gilray, Naeomi Gunn, Michael Irving, Kaye Jackson, Hugh Leabourn, Dru Reid, Steve Scott, Paul Sneyd, Maihi Tana, Denise Ferguson, Jan McAra.

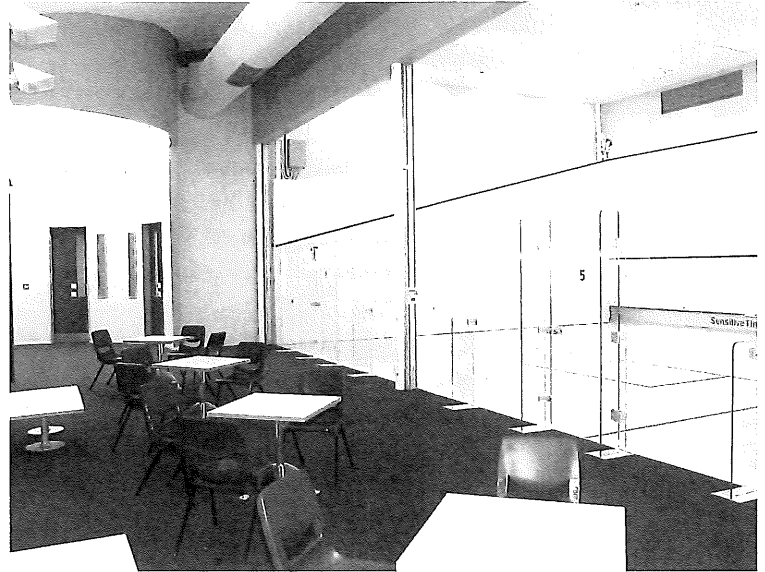
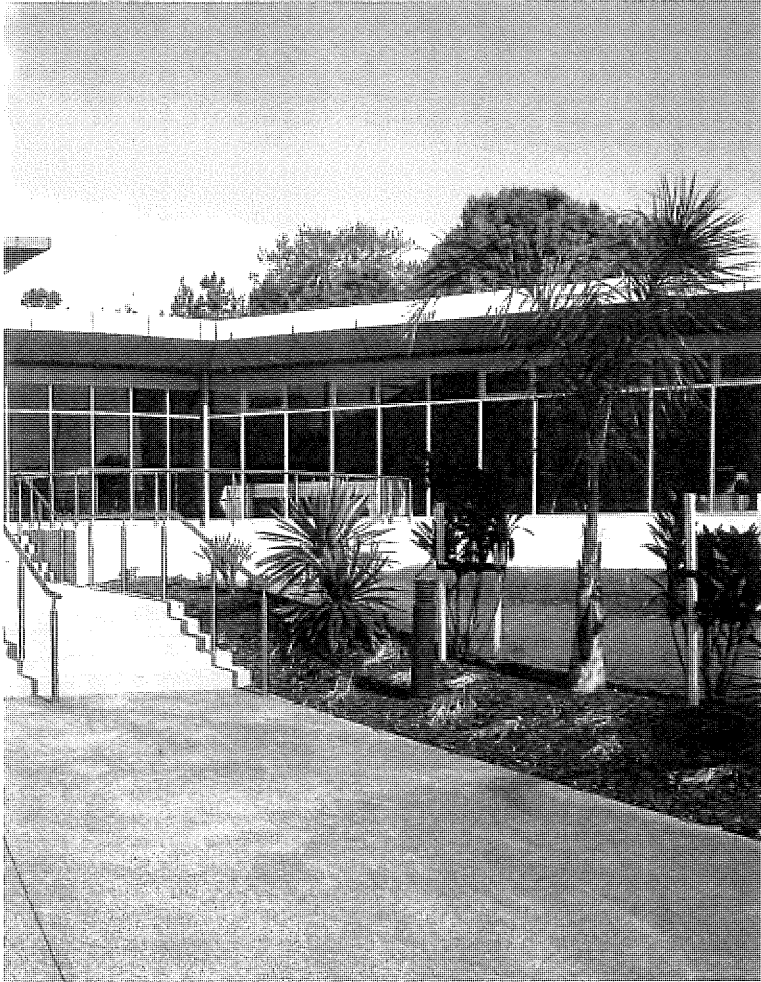
*BELOW: New Zealand Men's Champion for the tenth consecutive time - Paul Steel*



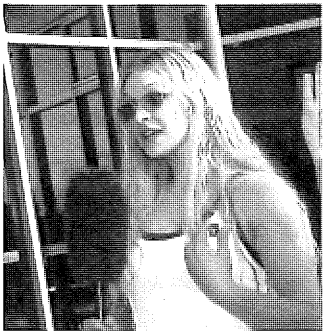


**Official Opening of I  
Septer**





## ional Squash Centre er 2001





## National Squash Centre Trust

On Friday 28 September 2001 the Prime Minister officially opened the NZ National Squash Centre.

The opening was the culmination and fulfilment of the efforts and inspiration of many people. It had its genesis with Squash Auckland many years ago and has been fostered and developed by both Squash Auckland and Squash New Zealand to create the first ever NZ headquarters for the administration, coaching and playing of squash.

The centre would not have been possible without the unique partnership developed with UNITEC, which provided not only the land but also considerably credibility to the joint venture. The relationship has continued to be very helpful and supportive and Andrew Codling (Vice-Chancellor and Trustee) has been and continues to be instrumental in this relationship.

The project could not have proceeded without the generosity of our sponsors who provided grants to the project particularly the ASB Charitable Trust - our principal grantor - and also the NZ Lotteries Grants Board, Auckland City Council and the Lion Foundation. The work of David Knowles in this fund raising success deserves particular mention.

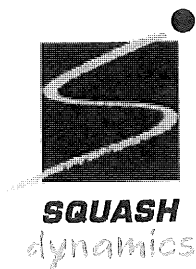
Many squash enthusiasts helped with the project and are too numerous to specifically mention but without them the tasks would have been more difficult. The contribution of Neven Barbour as the driving force behind this project for many years cannot be over emphasised. Neven was Project Manager during construction and is now the Executive Director responsible for running the centre. John Oakley has been appointed General Manager of the centre and his enthusiasm and commitment should ensure its successful operation.

The Board is very proud of this new Centre and its leading edge technology and multi-sport flexibility. The new "Creme" cafe is an exciting and innovative addition to the centre which should ensure its financial success. The National Squash Centre will provide NZ Squash with a true showpiece to raise the profile of the sport and enable hosting of national and international events. It will also be a superb additional recreational facility for UNITEC and the local community.

**BRUCE DAVIDSON**  
Chairman

*L to R: John Webster (Unitec), Prime Minister Helen Clark, Dame Susan Devoy (Trustee) and Bruce Davidson (Chairman) at the Centre's opening.*





## Squash Dyanamics

This year has seen two projects completed by Squash Dynamics and one in progress.

### HOWICK

The Howick Squash Club has completed their new four court facility with ASB System courts. They have three single courts that can alternate as two doubles as well as one fixed singles court. This project was made possible by the sale of their existing club and a close working relationship with the Manukau City Council.

### NATIONAL SQUASH CENTRE

The National Squash Centre project on the UNITEC campus in Auckland is a joint venture between Squash New Zealand, Squash Auckland and UNITEC. The project is under the National Squash Centre Trust with Bruce Davidson as Chairman.

This facility which was completed in September, has six courts that can be converted to four doubles courts or two open spaces of 200 square metres for other activities. The construction of the courts give two different examples of movable walls, one being electrically controlled and the other being operated manually. Also featured are electronic tins and an electronic scoreboard on one of the courts.

Already the flexibility of the court space has been demonstrated by such alternative uses as rhythmic dancing, indoor soccer and doubles squash.

The Centre features a highly popular 'KREEM' café which has delicious food and espresso coffee. This attractive area has become a meeting place for students, squash players and the general public.

### STRATFORD

The Stratford Squash Club has three new ASB courts being constructed at the moment as part of a new multisport complex in the town. These courts also feature movable walls. This Centre should open in late November and this is a good example of a small town achieving a new home for a number of sports where funding and operating costs can be shared.

Apart from major projects, many clubs have made inquiries regarding maintenance of courts for example glassbacks, front wall refurbishment, painting and other technology developments.

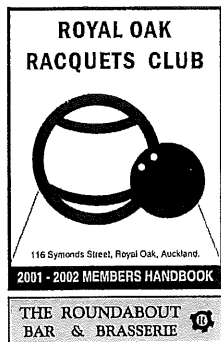
Finally there are a number of new prospective facility projects around the country which show the importance of squash as an attractive recreational sport.

### NEVEN BARBOUR



WELLINGTON JUNIOR BOYS  
TEAM NATIONAL  
CHAMPIONS 2001

L to R: Jason Woodfield, Graeme  
Wilson, Neville Fyfe, Reece  
Williams, Michael Martin,  
Martin Knight



## Lion Foundation 2001 Squash Club of the Year - Royal Oak Racquets Club

The winner of the 2001 Lion Foundation Squash Club of the Year is the Royal Oak Racquets Club of Auckland.

The award is presented to the club who, in the opinion of the appraisal committee, has successfully demonstrated the most significant growth, innovation and playing achievement in 2001.

The club is a multi sport facility catering for squash, tennis, swimming and fitness. It has five squash courts, five tennis courts with lights, a gymnasium and a swimming and paddling pool. The club lounge incorporates a bar and kitchen facility which is open to members throughout the week.

Five years ago the club was struggling to survive with a membership downturn and significant debt. Since that time the club has worked hard to build numbers and reduce the debt. Membership has steadily increased and the debt has been reduced from \$145,000 to zero in 2001.

A number of fund raising activities have enabled the club to upgrade its facilities. The club spent \$30,000 on revamping the lounge to provide a modern and attractive environment. Sailcloth screens were placed between the courts and a new fan system installed. Fourteen new carparks were created for the club. Events such as wine auctions, raffles, garage sales, tournaments and the BNZ Gold Star Award Dinner with Sir Richard Hadlee have provided the necessary funds for these developments.

The club has implemented an activity point scheme to encourage all members to become involved in the operation of the club facility. Whether it be time, goods or cash every member is encouraged to make some form of contribution to the club for they receive recognition.

A management committee which meets on a fortnightly basis has been instrumental in promoting new initiatives within the club and getting members more involved. The appointment of

a squash professional has enabled the club to provide coaching, tournament organisation, squash administration and membership services. A greater range of club activities have been made available to members as a result of the appointment.

The club publishes a weekly newsletter which is also emailed to members. There is also a website which contains the newsletters and a list of activities for competitive and non competitive players.

One of the major innovations for 2001 was the introduction of the Junior Squash Development Programme. With the support of generous local sponsors the Royal Oak Racquets Club has developed a programme to make squash available to children from over 20 local schools. More than 500 children have received an introduction to the sport and had coaching lessons. All of the participating schools wish to be involved in the programme next year.

The club has performed well on the court with Callum O'Brien winning the New Zealand U19 title. Callum was also the recipient of the award for the most improved Junior and Senior player in New Zealand. Rachel Baker was selected to play for New Zealand in the Doubles test against Australia. Kaye Jackson was selected to play for New Zealand in the Masters test against Australia. The Royal Oak women's B and C grade teams won the National Graded Teams finals. The club also performed well in Auckland competitions winning team pennants and individual honours.

As well as competing successfully at district and national level the club has also hosted a number of major tournaments throughout the year. Included amongst them were the National E Grade Teams Finals, the final tournament for the Auckland Junior Grand Prix Series and the finals of the Lion Foundation Auckland Championships.

Squash New Zealand and the Lion Foundation are proud to recognise the efforts of The Royal Oak Racquets Club for 2001 and we wish them success with their endeavours for the future.



## Club Kelburn

This is the eighth year that I reported on Club K and I am delighted to report we have had our best result to date.

The year, as in past years, has brought with it challenges. The summer in Wellington was the driest in 70 years, and we went into the winter months a bit "behind the eight ball" at that stage. A long dry summer is not the ideal climate for an indoor sports business, and this hurt us a bit. Nevertheless, we had a good winter trading period, which balanced things out somewhat.

Our court fees and gym fee revenue was very similar to last year. Trading (shop sales, drinks and snacks, racket repairs etc) was down 9% on last year, but still contributed very well to the end result. The other areas including sun tanning, gear hire and golf range hire all added to give us a good year end result.

Also this year we spent almost \$30,000 upgrading the building to "warrant of fitness" standards, after discussions with the city council and fire brigade. We have also carried out extensive renovations to the Club and our members have made very positive comments, which sets us up well for next year.

We have put some very innovative marketing plans to work in the last year, including a very active website. Our website ([www.clubk.co.nz](http://www.clubk.co.nz)) is updated daily with our league results, and our business house programme is updated weekly, with photographs of action of the week. We have also this year started "WebKlub", which is an email based squash tip, and/or a health and fitness tip, which we email out to anybody that is interested once a week. We have had a fantastic response to this, and to date we have almost 1,100 members. If you are not a member, join on our website. Don't delay, join today! The WebKlub keeps us constantly in the minds of our customers every week.

I must take this opportunity to thank all of my

eight staff, but in particular my two main full timers, Glen Williams and Dawn Carter. Glen, once again this year, has been fantastic in the gym and I.T area, and is a great asset to Club K in many ways. Dawn has been with us 7 months, and has fitted in really well, and done a great job on the squash side of the business. Her focus has been on coaching, and running our leagues and business house. She has done a great job, and is very well liked by our members and regulars.

I feel very positive about the next financial year, and have some exciting plans I am working on. But I won't tell you what they are now in case they don't work!

**ROB WALKER**  
Manager  
Club Kelburn





## Masters Report

I am pleased to report that Masters Squash is very healthy throughout the country and there have been a number of positive developments and encouraging progress over the last year.

Membership numbers are on the increase, now 54.6% of nationally graded players (46.3% in 1995), and we now have 5 x A1 and 41 x A2 in the Men's and 1 x A1 and 27 x A2 in the Women's sections, also 2 men and 1 woman are included in the National Ranking List.

The mens/womens ratio is now almost even with a 56% to 52% split respectively and 82% of these players are contained in the 35 to 49 age group.

These figures are particularly pleasing as they endorse the purpose of our Mission Statement -

*To encourage the retention of squash players 35 years and over and provide them with social and competitive participation in a friendly and compatible environment.*

### **NEW ZEALAND CHAMPIONSHIPS**

The 20<sup>th</sup> Annual Nationals were very efficiently hosted by the Kawarua Park over Labour Weekend and provided a very high standard of squash considering several members of the test team could not participate due to the fact that this event was held only a week after the World Championships in Melbourne.

An amazing feature of the 170 entries was that 77% were A to C grade players, 14% were D grade and only 8% were E and F grade.

It was pleasing to see four entries in the Men's 70 & over championship. Notable achievements included Jenny Webster winning her 14<sup>th</sup> national title and Carol Chard and Jill Roberts with 12 and 9 titles respectively.

The very popular Interdistrict Teams Event was once again closely contested with titleholders Canterbury defeating Auckland on a 17 to 15 game countback after each team had 5 wins each. Waikato defeated Bay of Plenty for 3<sup>rd</sup> position.

This competition is certainly increasing in playing standards and this year's teams included

90% either A or B grade players.

It was a huge disappointment that Wellington, for the first time, was not represented in this event.

Whakatane has been allocated this event for the 2002 season.

### **NATIONAL CLUB TEAMS EVENT**

Now in its third year, this event attracted eight North Island teams and was hosted by the Hamilton Squash Club.

Titleholders Taupo reigned supreme again and defeated Lugton Park 5/2 in the final Leamington beat Hamilton 4/3 for the third position. The competition was contested in two pools with cross-over ranking matches on the final day.

The weekend was thoroughly enjoyed by all participants and there is strong support from those who attended for the event to continue and for it to grow into a bigger and more widely represented tournament. Manurewa's entry this year was the first by an Auckland club.

The 2002 event has been allocated to the Taupo Club in an effort to encourage more entries from the Auckland District which so far have been disappointing.

### **TRANSTASMAN TEST SERIES**

The 14<sup>th</sup> Test Series between New Zealand and Australia was held during the week preceding the World Championships and the New Zealand Team after an overwhelming series win in 2000 but, with five of last year's team unavailable, were still confident of another good performance.

After a disappointing 9-3 loss in the 1<sup>st</sup> test in very hot conditions the team fought back for a 6-6 draw in the second test only to be beaten 22 games to 19 games. The 3<sup>rd</sup> test resulted in a 7-5 win to Australia in another closely fought encounter. Undefeated players in the 3 tests were Brennan Williams (M40), Jill Roberts (W60) and Jenny Webster (W55).



*NZ MASTERS TEAM TO AUSTRALIA OCTOBER 2001*

*L to R: Tony Naughton, Lawrence Skurr, Brennan Williams, Richard Purser, Gary Duberley, Don Preston, Michel Galloway  
Sitting: Katherine Austin, Gower Dallimore (Manager), Jenny Webster, Kaye Jackson, Jill Roberts, Sandra Egan*

The team was very disappointed at the final outcome but justifiably proud of its overall performance, yet a series loss makes sad reading. However we were pitted against the strongest team Australia has ever fielded and the outcome of the series hinged on some luck and one or two points going our way.

#### **WORLD CHAMPIONSHIPS**

The 6<sup>th</sup> World Championships were held in Melbourne in early October and provided some outstanding performances for New Zealand entrants, as detailed below

- Winners:** Richard Purser (M55)  
Jenny Webster (W55)
- Runners Up:** Trevor Colyer (M50)  
Jill Roberts (W60)
- Semi-Finalists:** Judy Cooper (W55)  
Ann Harliwick (W40)

In addition, eight more players reached the quarter finals.

#### **IN CONCLUSION**

Masters Squash is in great heart and has a great future. Our proud record justifies this and in a relatively short time has become a major player in the New Zealand and International Squash scene. Every effort needs to be made for it to remain this way.

I would like to acknowledge the work and support carried out by the Masters Committee, District Convenors, National Selectors and the National Office who have donated a large amount of time over the last year. It has been greatly appreciated.

**GOWER DALLIMORE**  
Director - Masters



## Junior/Youth Report

### **TALENTED YOUTH MAKING THE MOVE**

It is promising to see players starting to come through the junior scene in New Zealand with players such as Callum O'Brien showing up as a real force for the future. Our female youth players also continue to impress on the international scene with Shelley Kitchen and Lara Petera leading the charge. On a sadder note it was unfortunate to see Jared Conning and Louise Crome forced to sit the year out as they try to overcome injuries, and I wish them both the best for the New Year.

### **BLUEBIRD JUNIOR SERIES**

Great to see this competition was continued and supported in 2001. It provides a great platform for the squash development of all ages. I note with interest that many districts are now setting up their own "player series" which is interwoven in with the national player series and the major championship events. Active participation is certainly being encouraged and with the new coach coming on board, there will be plenty of opportunities for players to show their stuff in 2002.

### **REGIONAL DEVELOPMENT AND COACHING**

The increasing number of juniors taking up the game is very positive but it also places an additional burden on the few that have the coaching skills to carry and promote squash at the club level. Parents who are bringing their children to squash are looking not only for more coaches but better trained coaches who can provide the best for their children. The setting up of a National Coaching Panel to lead this area of the game is a very positive move and I look forward to the support this panel will bring to such an important area of the game.

### **AND THE WINNERS ARE....**

The Gifford cup once again seems to be the "property" of Auckland juniors. However the junior men's team from Wellington did win the teams event – a real credit to the Wellington boys and the work of the Wellington Academy. But the win by the junior women's team from Auckland was

particularly meritorious in view of the fact the team were struggling to provide four fit players. Hence it was a real credit to them that they not only won but did it with sufficient impact to take back the overall lead that Wellington had. Congratulations to everyone. It was a great spectacle to witness.

### **NORTH & SOUTH ISLAND CHAMPIONSHIPS**

The Bluebird series certainly added tremendous interest and incentives to the National junior competition. The Island champs were both well supported. Next year the South Island Champs will be the first of the Bluebird series events, a change from the traditional calendar. We look forward to a strong turnout in Invercargill.

### **INTERNATIONAL COMMITMENTS**

The junior women's team left for the World Junior Championships in Malaysia focused on an improved performance. Results indicated they did just that and performed beyond expectations and achieved a ranking of 7th. Congratulations to the team and manager.

### **SECONDARY SCHOOL TEAMS COMPETITION**

The report from Nelson on the school competition highlighted the friendly atmosphere and high standard of competition. Greg Stewart's report noted that the secondary schools ruling body have now moved to make eye-wear compulsory for future events. A sound move indeed and one that will continue to improve safety for all players both now and in the future.

### **SENIOR COMPETITION**

Some of our top performers in the junior programme are well ensconced in the senior programme – and probably the best thing to have happened since they seem to be flourishing in it. It is my view that top U15's (and upwards) must be encouraged to compete in as many senior tournaments as possible – and there is no where better to start than competing in their local District Opens and



AUCKLAND GRAMMAR - OPEN SQUASH TEAM AUCKLAND REGIONAL CHAMPIONS, NEW ZEALAND SECONDARY SCHOOLS SQUASH CHAMPIONS

*Back Row: Jeremy Kenealy, Michael Barlev, Aiden Kenealy*

*Front Row: Tala Elise (Coach), Robert Davidson, Bryan Dill-Russell (captain), Kieran McMillan, Doug McKenzie (Manager)*

other events in the Senior Player series. The move away from a specific U21 event should not be seen as the end of promotion for youth squash. Although the level of active participation at youth tournaments was diminishing, the contribution these players make to senior squash is quite significant and we still need to acknowledge their achievements in awarding honors specifically for their age group.

#### **SDO'S AND REFEREES**

This year, I took time to discuss some of the activities and initiatives being promoted within districts by the Squash Development Officers and without exception all were flat out in their own patch. The national objective to 'grow the game' is very dependent on the success of the SDO's and we must offer them our full support.

To play any game well the referee needs to do their job well. In squash as in all sports, referees

are still one of the most valuable officials and I thank them all for their contribution to standards of conduct and behavior in the court. Special thanks also to those who took time off work and left the comfort of home to travel and manage teams on behalf of our national and international commitments. There are numerous others deserving of our thanks and appreciation but perhaps of special value to us at this point in time is the volunteer who does everything for the love of the sport. Thank you all indeed.

#### **HANK SCOTT**

**Director - Junior/Youth Programme**





# Audit Report

## **To the readers of the financial report of New Zealand Squash (Inc).**

We have audited the financial reports as presented. The financial report provides information about the past financial performance of New Zealand Squash (Inc) and its financial position as at 30 September 2001. This information is stated in accordance with the accounting policies as set out.

## **Squash New Zealand (Inc) Responsibilities**

The Executive Council is responsible for the preparation of the financial report which fairly reflects the financial position of New Zealand Squash (Inc) as at 30 September 2001 and of the results of operations for the year ended 30 September 2001.

## **Auditor's Responsibilities**

It is our responsibility to express an independent opinion on the financial report presented by the Executive Council and report our opinion to you.

## **Basis of Opinion**

An audit includes examining, on a test basis, evidence relevant to the amounts and disclosures in the financial report. It also includes assessing:

1. the significant estimates and judgments made by the Executive Council in the preparation of the financial report, and
2. whether the accounting policies are appropriate to New Zealand Squash (Inc) circumstances, consistently applied and adequately disclosed.

We conducted our audit in accordance with New Zealand Auditing Standards except where our work was limited as explained below. We planned and performed our audit so as to obtain all the information and explanations which we considered necessary in order to provide us with sufficient evidence to obtain reasonable assurance that the financial report is free from material misstatements, whether caused by fraud or error. In forming our opinion we also evaluated the overall adequacy of the presentation of the information in the financial report.

Other than in our capacity as auditors we have no relationship with or interest in New Zealand Squash (Inc).

## **Qualified Opinion**

Control over cash sales for Club Kelburn prior to being recorded is limited. There is no system of control over such sales on which we could rely for the purpose of our audit and there is no satisfactory audit procedures that we can adopt to confirm independently that all cash sales were properly reconciled. In this respect alone we have not obtained all the information and explanation that we have required.

In our opinion, except for the adjustments that might have been found to be necessary had we been able to obtain sufficient evidence concerning cash sales at Club Kelburn, the financial report as presented

- Fairly reflects the results of operations for the year ended 30 September 2001 ; and
- In our opinion the Statement of the Financial Position fairly reflects the financial position of New Zealand Squash (Inc) as at 30 September 2001.

Our audit report was completed on 7 November 2001 and our qualified opinion is expressed as at that date.

**MCGREGOR BAILEY & CO**

**7 November, 2001**



NEW ZEALAND SQUASH (INC)

## Consolidated Statement of Financial Position

for the year ended 30 September 2001

	Note	2001 \$	2000 \$
<b>Accumulated Funds</b>			
Opening Balance as at 1 October		854,472	858,884
Surplus/(Deficit) for the Year		(130,527)	(4,412)
<b>Total Accumulated Funds</b>		<u>723,945</u>	<u>854,472</u>
<b>Represented By :</b>			
<b>Current Assets</b>			
Cash on Hand		370	310
Current Accounts		50,726	18,077
On Call Accounts		260,094	541,464
Term Deposits		273,685	325,354
Accounts Receivable		141,934	248,190
Resident Withholding Tax		109	90
Stock on Hand	1	90,452	27,126
Payments in Advance		17,000	10,117
<b>Total Current Assets</b>		<u>834,370</u>	<u>1,170,728</u>
<b>Investments</b>			
Loans to Clubs	3	20,000	20,000
<b>Total Investments</b>		<u>20,000</u>	<u>20,000</u>
<b>Non-current Assets</b>	4	206,677	202,450
<b>Total Assets</b>		<u>1,061,047</u>	<u>1,393,178</u>
<b>Current Liabilities</b>			
Accounts Payable		201,977	309,730
GST Payable		13,420	55,852
Sundry Accruals	5	433	85,433
Income in Advance	6	70,250	22,000
Current Portion - UDC Lease	7	16,088	14,669
<b>Total Current Liabilities</b>		<u>302,168</u>	<u>487,684</u>
<b>Term Liabilities</b>			
UDC - Photocopier Lease	7	34,934	51,022
<b>Total Term Liabilities</b>		<u>34,934</u>	<u>51,022</u>
<b>Total Liabilities</b>		<u>337,102</u>	<u>538,706</u>
<b>Net Assets</b>		<u>723,945</u>	<u>854,472</u>



NEW ZEALAND SQUASH (INC)

## Consolidated Statement of Financial Performance

for the year ended 30 September 2001

	Note	2001 \$	2000 \$
<b>Income</b>			
<b>Levies &amp; Subscriptions</b>			
Affiliation Levies	8	431,330	435,885
Grading Levies		19,395	14,458
Associate Memberships		10,362	7,858
<b>Total Levies &amp; Subscriptions</b>		<b>461,087</b>	<b>458,201</b>
<b>Public Sector Grants</b>			
NZSF International		30,000	165,000
ANZSEP		17,000	35,000
NZSF - Personal		17,500	15,700
NZSF - Coaching		35,000	-
NZSF - General		47,166	26,934
Hillary Commission National Funding		134,250	131,250
<b>Total Public Sector Grants</b>		<b>280,916</b>	<b>373,884</b>
<b>Other Grants</b>			
Mitchell Trust		5,000	8,001
<b>Total Other Grants</b>		<b>5,000</b>	<b>8,001</b>
<b>Sponsorships</b>		<b>41,056</b>	<b>75,073</b>
<b>Investments</b>			
Club Kelburn	9	133,384	121,489
Squash Dynamics Limited	10	3,641	(4,593)
Interest Received		23,448	21,688
<b>Total Other Income</b>		<b>160,473</b>	<b>138,584</b>
<b>Total Income</b>		<b>948,532</b>	<b>1,053,743</b>



NEW ZEALAND SQUASH (INC)

## Consolidated Statement of Financial Performance

for the year ended 30 September 2000

	Note	2001 \$	2000 \$
<b>Expenditure</b>			
<b>Management &amp; Operations</b>			
Governance		60,967	50,772
Salaries & Fees		211,667	205,492
Overheads		51,310	36,458
<b>Total Management &amp; Operations</b>		<u>323,944</u>	<u>292,722</u>
<b>Promotion &amp; Marketing</b>		83,455	103,805
<b>Regional Development</b>		117,481	209,728
<b>Coaching Education &amp; Development</b>		2,590	34,125
<b>Referees</b>		15,212	-
<b>Gradings &amp; Rankings</b>		44,195	37,836
<b>National Events</b>		15,938	15,107
<b>High Performance Programme</b>		293,946	278,604
<b>National Squash Centre Grant</b>		150,000	50,000
<b>Total Expenses</b>		1,046,761	1,021,927
Depreciation		25,026	36,228
Loss on Disposal of Assets		7,272	-
<b>Total Expenses after Depreciation</b>		<u>1,079,059</u>	<u>1,058,155</u>
<b>Net Surplus / (Deficit) for the Year</b>		<u>(130,527)</u>	<u>(4,412)</u>



NEW ZEALAND SQUASH (INC)

## Notes to the Financial Accounts

for the year ending 30 September 2001

### Statement of Responsibility

As Chairman and Chief Executive Officer of New Zealand Squash (Inc), we accept responsibility for the preparation of these financial statements. The statements have been prepared in accordance with generally accepted accounting practices. As part of the Association's financial management systems, effective controls have been implemented and maintained to provide reasonable assurance as to the integrity and reliability of financial reporting. We are satisfied that these financial statements fairly reflect the financial position and operation of the Association for the reporting period.

**DAVID BASSETT**

Chairman

**ANG BECROFT**

Chief Executive

### I - ACCOUNTING POLICIES

#### Statement of Accounting Policies

##### Differential Reporting

New Zealand Squash (Inc) is the New Zealand national sporting organisation responsible for the control, advancement and regulation of the game of squash throughout New Zealand. New Zealand Squash (Inc) is incorporated under the Incorporated Societies Act 1908.

The Association qualifies for differential reporting as it is not publicly accountable and does not qualify as "large", as defined within the Institute of Chartered Accountants of New Zealand's framework for differential reporting. The entity has taken advantage of all the differential reporting exemptions available to it.

##### Measurement Base

The accounting principles recognised as appropriate for the measurement and reporting of earnings and financial position on an historical cost basis have been followed. Accrual accounting is used to match income and expenditure.

##### Specific Accounting Policies

The following specific accounting policies which materially affect the measurement of financial performance, and of financial position have been applied:

##### Operating Leases

Operating lease payments, where the lessors effectively retain substantially all the risks and benefits of ownership of the leased items, are included in the determination of operating profit in equal installments over the term of the lease (refer Note 11).

##### Finance Leases

The Association leases certain office equipment. Finance leases, which effectively transfer to the entity substantially all the risks and benefits incidental to ownership over the lease term, are capitalised at the present value of the minimum lease payments. The lease assets and corresponding liabilities are disclosed and the leased assets are depreciated using the maximum rates allowable by the Income Tax Act 1994.

##### Stock

Stock has been valued at the lower of cost or net realisable value. Due allowance has been made for slow moving stock.

##### Goods & Services Tax

The financial statements have been prepared on a GST exclusive basis.

##### Construction Contracts

Profits on construction contracts are determined using the percentage of completion method. Profits are recognised only when the outcome can be reliably estimated.

Foreseeable losses on a contract are recognised immediately.



### Fixed Assets

All fixed assets are recorded at cost less accumulated depreciation to date. Depreciation has been provided at the maximum rates permitted by the Income Tax Act 1994.

### Investments

Investments are loans advanced to clubs for renovations and development and are stated at cost.

### Changes in Accounting Policies

There have been no changes in accounting policies. All policies have been applied on a basis consistent with those used in previous years.

## 2 - INVENTORY COMMITMENTS

No inventories are specifically and separately pledged as security for liabilities. Inventory is subject to retention of title clauses.

## 3 - INVESTMENTS

Herne Bay Ponsonby Rackets Club (Inc)	\$20,000
<i>Advancement Date</i> : 12 June 1996	
<i>Terms</i> : Original Term Five Years increased to 7 Years	
<i>Repayment Date</i> : Original Date of Repayment 12 June 2001 extended to 12 June 2003	
<i>Interest Rate</i> : 10% per annum	
<i>Security</i> : The advance is covered by an "Instrument by way of Security" dated 7 August 1996"	

## 4 - FIXED ASSET & DEPRECIATION SCHEDULE

Description	Cost	Opening Book Value	Additions / (Disposals)	Depreciation	Accumulated Depreciation	Closing Book Value
Trophies	500	500	-	-	-	500
Motor Vehicles	32,992	9,147	-	1,697	25,542	7,450
Plant, Equip & Fittings	304,016	104,353	8,655	29,058	228,721	83,950
Computer Software	9,801	2,607	-	1,251	8,445	1,356
Sports Equipment	131,095	31,926	37,541	25,990	125,159	43,477
Buildings	650,402	14,362	-	14,362	650,402	0
Leasehold Improvements	161,927	39,554	50,804	20,414	142,787	69,944
<b>Total</b>	<b>1,290,733</b>	<b>202,449</b>	<b>97,000</b>	<b>92,772</b>	<b>1,181,056</b>	<b>206,677</b>

## 5 - SUNDRY ACCRUALS

	2001	2000
High Performance Programme	-	25,000
Regional Development Programme	-	60,000
Club Kelburn Café Rental	433	433
Total Sundry Accruals	433	85,433

## 6 - INCOME IN ADVANCE

	2001	2000
Hillary Commission Grants	20,000	20,000
NZSF - Grants	50,250	-
Lion Foundation Grant	-	2,000
Total Income in Advance	70,250	22,000

## 7 - FINANCE LEASE

Finance leases are secured over the assets they relate to. Interest rates on the outstanding lease agreement is 8.9%. This rate is fixed through the life of the lease. The term of the lease is 60 months with the lease expiring 4 September 2004.

The lease is repayable as follows :

	2001	2000
Current Liability	16,088	14,669
Non - Current Liability	34,934	51,022
Total Finance Lease Obligations	51,022	65,691

## 8 - LEVIES & SUBSCRIPTIONS

Affiliation levy income for the 2001 year was calculated on an SEM rate of \$26.00 plus GST.

## 9 - CLUB KELBURN

The following is a summarised Statement of Financial Performance for Club Kelburn for the year ended 30 September 2001 :

	2001	2000
<b>Income :</b>		
Trading Profits	88,288	97,194
Court Fees	196,086	206,514
Gear Hire	12,142	11,767
Grants	29,877	-
Gym, Aerobics, Sauna & Sunbed	177,403	179,035
Restaurant Rental	5,725	6,550
Sponsorship & Promotion	2,884	4,116
Interest Received	4,741	10,519
Other Income	7,943	10,004
<b>Total Income</b>	<b>525,089</b>	<b>525,699</b>
<b>Less : Expenditure</b>		
Bank Fees	4,373	3,735
Depreciation	67,161	73,250
Insurance	8,041	8,008
Management & Sundry	227,610	232,073
Power & Utilities	32,790	29,474
Rent & Rates	34,427	33,275
Repairs & Maintenance	17,303	24,395
<b>Total Expenditure</b>	<b>391,705</b>	<b>404,210</b>
<b>Net Surplus</b>	<b>133,384</b>	<b>121,489</b>

## 10 - SQUASH DYNAMICS

The following is a summarised Statement of Financial Performance for Squash Dynamics Limited for the year ended 30 September 2001 :

	2000	2001
<b>Net Contract Income</b>	106,243	85,699
<b>Less : Expenses</b>		
Bank Charges	211	-
Depreciation	585	1,003
Insurance	3,869	2,346
Management & Contract Fees	59,760	59,479
Operational Expenses	26,280	12,147
Professional Fees	4,589	8,894
Travel & Accommodation	7,422	6,882
<b>Total Expenses</b>	<b>102,716</b>	<b>90,751</b>
<b>Net Operating Surplus / (Deficit)</b>	<b>3,527</b>	<b>(5,052)</b>
<b>Plus : Interest Income</b>	<b>114</b>	<b>459</b>
<b>Net Surplus / (Deficit)</b>	<b>3,641</b>	<b>(4,593)</b>

## 11 - CAPITAL & LEASE COMMITMENTS

### Capital Commitments

There is no capital expenditure contracted for at Balance Date

### Operating Lease Commitments

Lease commitments under non-cancelable operating leases :

	2001	2000
Current	54,267	54,267
Non-current	83,089	112,093
Total	137,356	166,360

## 12 - CONTINGENT LIABILITIES

New Zealand Squash (Inc) had no contingent liabilities as at 30 September 2001.

## Membership Returns 2001

Club	Senior Men	Senior Women	Junior Men	Junior Women	TOTAL
<b>NORTHLAND</b>					
Bream Bay	8	0	3	0	11
Dargaville	33	26	5	0	64
Doubtless Bay	23	17	5	2	47
Kaitaia	45	17	9	5	76
Kamo	38	32	9	11	90
Kerikeri	33	20	10	9	72
Manaia	17	14	12	11	54
Mangakahia	31	19	20	6	76
Maungaturoto	27	4	1	0	32
Mid Western	24	14	10	4	52
Southern (Te Kopuru)	39	20	6	3	68
Waipu	32	20	20	17	89
Warkworth	21	4	5	0	30
Wellsford	40	32	26	14	112
Whangarei	72	30	19	12	133
<b>TOTAL</b>					<b>1006</b>
<b>AUCKLAND</b>					
Auckland Univers	50	19	1	0	70
Belmont Park	44	22	32	2	100
Browns Bay	164	62	46	16	288
College Rifles	90	38	3	2	133
Devonport	45	6	1	2	54
Eden Epsom	242	98	92	26	458
Ellerslie	104	24	0	0	128
Franklin	81	29	20	10	140
Grammar	50	4	1	1	56
Henderson	230	84	48	30	392
Herne Bay	214	84	26	8	332
Howick	123	46	46	20	235
Kumeu	36	10	25	7	78
Manurewa	77	42	13	7	139
Maramarua	52	14	5	6	77
Mercer	16	9	4	0	29
North Shore	352	99	50	13	514
Panmure	156	67	23	12	258
Papakura	64	23	23	8	118
Papatoetoe	30	18	0	1	49
Red Beach	51	42	22	4	119
Remuera	182	63	76	33	354
RNZ AF	25	10	0	0	35
RNZ Navy	37	26	0	0	63
Royal Oak	131	75	23	12	241
Shepherds Park	19	15	0	0	34
Silverdale	46	20	2	1	69
Te Papapa	35	19	1	0	55
Titirangi	153	39	22	7	221
Waiuku	94	31	28	21	174
Weymouth	63	33	1	0	97
<b>TOTAL</b>					<b>5110</b>



Club	Senior Men	Senior Women	Junior Men	Junior Women	TOTAL
<b>WAIKATO</b>					
Aria	27	16	7	8	58
Cambridge	69	45	15	2	131
Frankton	64	37	1	0	102
Hamilton OB	29	15	0	4	48
Hamilton	312	105	24	21	462
Huntly	25	21	11	9	66
Leamington	37	33	7	8	85
Lugton Park	86	54	10	5	155
Matamata	57	36	21	3	117
Mercury Bay	16	17	0	0	33
Morrinsville Sports	6	1	0	0	7
Morrinsville	63	43	19	10	135
Ngaruawahia	19	9	18	15	61
Otorohanga	35	25	3	0	63
Paeroa	51	28	2	2	83
Ruakura	65	51	1	0	117
Taumarunui	52	29	17	5	103
Taupiri	22	12	0	1	35
Te Aroha	40	27	3	0	70
Te Awamutu	81	49	25	10	165
Te Kauwhata	16	13	14	3	46
Te Kuiti	17	16	0	0	33
Te Pahu	21	16	4	7	48
Te Rapa	42	31	2	1	76
Thames	60	42	11	7	120
United Matamata	34	18	3	0	55
Waihi	38	16	15	8	77
Waikato Hospital	27	14	0	0	41
Waitomo	37	12	5	3	57
Whangamata	8	14	6	3	31
<b>TOTAL</b>					<b>2680</b>

#### BAY OF PLENTY

Edgecumbe	43	25	5	4	77
Galatea	26	21	6	2	55
Geyser City	148	80	31	12	271
Katikati	49	33	24	10	116
Kawerau	19	18	13	5	55
Lakes High	48	27	7	9	91
Marist	28	26	7	4	65
Mount Maunganui	106	45	8	12	171
Putaruru	61	41	29	27	158
Reporoa	26	23	16	10	75
Rotorua Waikite	51	31	10	4	96
Taneatua	49	34	9	7	99
Taupo	74	43	30	37	184
Tauranga	143	81	38	30	283
Te Puke	87	62	35	27	211
Ti Street	3	1	0	0	4
Tokoroa	53	32	12	9	106
Waikite Valley	32	14	16	13	75
Whakatane	167	95	10	9	281
<b>TOTAL</b>					<b>2473</b>



Club	Senior Men	Senior Women	Junior Men	Junior Women	TOTAL
<b>HAWKES BAY/GISBORNE</b>					
Gisborne HSOB	30	29	9	9	77
Gisborne		No Return			
Hastings	43	23	7	1	74
Havelock North	88	26	17	5	136
Hawkes Bay LT	75	31	6	1	113
Hawkes Bay	142	64	12	5	223
Takapau	17	12	2	2	33
Waerenga-a-hika	47	37	40	25	149
Waikare	4	10	1	0	15
Waipukurau	25	15	5	6	51
<b>TOTAL</b>					<b>871</b>
<b>CENTRAL</b>					
Ashhurst Pohangina	33	21	4	4	62
Dannevirke	46	26	32	11	115
Eltham	38	22	0	0	60
Feilding	47	32	10	9	98
Foxton	13	15	6	3	37
Hawera	80	66	4	11	161
Inglewood	54	37	12	7	110
Kawarua Park	135	56	24	13	228
Levin	40	25	17	9	91
Massey University	1	0	0	0	1
Ohakea	1	0	0	0	0
Ohakune	32	28	34	22	116
Okato	144	117	13	14	288
Opunake	19	20	4	1	44
Squash Palmerston North	152	65	63	39	319
Patea	24	14	5	5	48
Puketoi	26	20	6	0	52
Rangitikei	60	36	20	15	131
Stratford	28	24	10	0	62
Taihape	19	20	3	9	51
Tararua	45	38	11	7	101
Turangi	19	11	1	1	32
Waitara	66	39	16	6	127
Wanganui	135	62	15	10	222
Wanganui TCOB	50	36	3	1	90
<b>TOTAL</b>					<b>2646</b>

Club	Senior Men	Senior Women	Junior Men	Junior Women	TOTAL
<b>WELLINGTON</b>					
Celtic	26	20	2	2	50
Collegians	123	86	42	15	266
Fraser Park	53	34	4	6	97
Island Bay	78	56	36	15	185
Kapiti	71	44	38	19	172
Khandallah	92	48	30	9	179
Mana	98	61	27	22	208
Marlborough College	32	29	9	2	72
Marlborough	65	27	16	3	111
Martinborough	20	16	18	11	65
Masterton	124	75	54	27	280
Mitchell Park	214	51	28	8	301
Motueka	32	24	4	2	62
Nelson	189	81	23	13	306
Northern	36	24	0	0	60
Otaki	15	6	0	0	21
Red Star	55	21	2	2	80
Takaka	27	19	0	0	46
Tawa	109	68	61	14	252
The Thorndon Club	109	29	4	3	145
Squash @ Upper Hutt	99	41	43	27	210
Waikanae	15	14	5	7	41
Waimea T & C	68	36	11	8	123
Wainuiomata	60	40	16	10	126
Woodbourne					
<b>TOTAL</b>					<b>3458</b>

Club	Senior Men	Senior Women	Junior Men	Junior Women	TOTAL
<b>CANTERBURY</b>					
Amberley	18	11	8	0	37
Burnside	105	61	57	19	242
Cashmere	34	13	0	0	47
Christchurch Football	123	58	16	9	206
Christchurch HSOB	51	28	0	8	87
Christchurch	150	44	4	0	198
City Club	26	0	0	0	26
Ellesmere	22	5	0	0	27
Hokitika	44	26	2	0	72
Hoon Hay	54	38	24	9	125
Kaiapoi	29	32	30	11	102
Kaikoura	32	16	6	5	59
Lincoln	20	26	6	2	54
Linwood	57	35	4	0	96
Lyttelton	12	0	0	0	12
Malvern	35	16	21	4	76
Mount Pleasant	52	18	10	10	90
Oxford	17	16	2	0	35
Rangiora	53	24	22	8	107
Riccarton	48	30	0	0	78
Richmond Wkmens	67	39	19	7	132
St Andrews	70	33	12	5	120
Sumner	43	25	0	0	68
Westport	42	31	3	2	78
<b>TOTAL</b>					<b>2174</b>
<b>MIDLANDS</b>					
Ashburton	116	39	51	11	217
Excelsior		No Return			
Kurow	23	16	2	1	42
Mackenzie	28	16	2	0	46
Oamaru	53	27	8	2	90
Timaru OB		No Return			
Timaru	91	31	16	7	145
Waimate		No Return			
<b>TOTAL</b>					<b>540</b>

Club	Senior Men	Senior Women	Junior Men	Junior Women	TOTAL
<b>OTAGO</b>					
Alexandra	46	43	16	9	114
Clutha	28	16	30	12	86
Cromwell	36	19	3	3	61
Fernhill	20	0	0	0	20
Logan Park	69	41	4	3	117
Maniototo	15	18	0	3	36
North End	41	19	0	2	62
Omakau	27	14	0	1	42
Otago	76	54	21	2	153
Otago University	80	29	8	6	123
Palmerston	4	6	0	0	10
Pirates	63	22	11	1	97
Queenstown	66	39	2	0	107
Roxburgh & Districts	12	12	14	8	46
Southern	32	25	10	7	74
Sunnyvale	37	3	1	1	42
Taieri	65	48	12	5	130
Toko	25	20	1	0	46
Wanaka	33	20	2	1	56
<b>TOTAL</b>					<b>1422</b>
<b>SOUTHLAND</b>					
Balfour	11	16	5	2	34
Central Southland	44	35	35	15	129
Clinton Community	53	46	14	5	118
Dipton	27	20	7	6	60
Fiordland	28	24	5	3	60
Gore	21	15	7	5	48
Gore Town & Country	8	5	0	0	13
Gorge Rd		No Return			
Heriot	20	15	1	1	37
Lumsden	12	3	0	0	15
Makarewa	42	11	7	3	63
Mossburn	12	17	0	0	29
Nightcaps	30	16	28	14	88
Otautau	76	39	36	18	169
Riverton (New)	10	9	6	1	26
Riversdale	24	22	10	2	58
Squash City	142	59	33	11	245
Tapanui & Districts	27	20	1	2	50
Waiau	13	18	2	1	34
Waikaia	19	10	0	0	29
Waikaka	14	22	2	2	40
Wyndham	13	14	1	3	31
Squash Southland	0	0	148	35	183
<b>TOTAL</b>					<b>1559</b>

Squash New Zealand wishes to acknowledge the following sponsors:

