

**ANNUAL**

**REPORT**

**1998**



Squash New Zealand  
**ANNUAL REPORT**  
**1998**

<b>Contents</b>	<b>Page #</b>
Contents	1
Squash New Zealand Officials	2
President's Review	4
Chief Executive's Report	6
Club of the Year	9
Dame Susan	10
World President's Report	12
Masters	14
Refereeing	16
Junior-Youth Programme	17
Club Kelburn	19
Gradings & Statistics	20
SFRITO in 1998	21
National Events	22
1998 Awards	32
Jade Wilson	33
Annual Accounts	35
Notes to the Accounts	38
Audit Report	44

**Squash New Zealand**  
**P O Box 21 781 - Henderson - Auckland**  
Tel: 64-9 836 2217- Fax: 64-9-836 0309  
Email: [squashnz@squashnz.co.nz](mailto:squashnz@squashnz.co.nz)  
Website: [www.nzsquash.co.nz](http://www.nzsquash.co.nz)

# **SQUASH NEW ZEALAND**

## **OFFICIALS 1997-1998**

### **PATRON:**

The Hon. Sir David Beattie

### **EXECUTIVE COUNCIL:**

Neven Barbour [Chairman], Dave Bassett, Gerard De Courcy  
Jan McAra, Jim O'Grady, Debra Rodgerson

### **PROGRAMME DIRECTORS:**

**Doubles:** Butch Gifford  
**Gradings & Statistics:** Steve Scott  
**Junior/Youth:** Hank Scott  
**Masters:** Gower Dallimore  
**National Events:** Alan Simpson  
**Refereeing:** Joss Urbahn

### **HIGH PERFORMANCE BOARD:**

Neven Barbour, Robyn Brownlee, Dame Susan Devoy, Susie Simcock,  
[David Knowles, Paul Wright, ex officio]

### **SELECTORS:**

#### **Junior & Senior**

Wendy Browne, Nigel Lloyd, Jenny Norton, Ross Titchmarsh, Paul Wright

**Masters:** Gower Dallimore, Ray Southey, Sandra Tinkler

### **NATIONAL STATISTICIANS:**

**Women:** Vivienne Brumby

**Men:** Peter Singer

### **PLAYERS REPS:**

Jenny Bell, David Friery

### **NATIONAL OFFICE:**

**Chief Executive:** David Knowles

**Administration Manager:** Vivienne Brumby

**National Coach:** Paul Wright

**Project Manager:** Francis Scordino

**Contract Accountant:** Lyn Hamon

### **HON. SOLICITOR:**

Michael Sumpter

### **AUDITOR:**

McGregor, Bailey & Co.



Chairman's Review

## **Neven Barbour**

Squash New Zealand  
Executive Council

Leadership is about setting an example that other people will want to follow.

The Executive Council of Squash New Zealand has confronted a raft of difficulties over the last two years. It has had to understand the changing character of the sport and leisure sector before devising and implementing a new strategy to secure the future of the game in New Zealand. This work has involved getting the income and expenditure of the national association under control and making key decisions about where (and where not) to invest the savings.

I'm pleased with the financial consolidation that has taken place during the last year and the surplus of \$206,000 is evidence that the sacrifices made by squash people in every sector of the game have made a difference. The profitability of Club Kelburn, Squash New Zealand's own property, has been invaluable and the platform now exists to re-launch squash as a sport for the millenium.

But it's been about more than money. As a leadership organisation, Squash New Zealand – in its new colours – has had to break free of the past and win back the confidence and goodwill of its members. I acknowledge immediately that this process is never finished but we have made progress: there is a growing buoyancy out there in the districts and clubs. The policy of open communication has helped repair the relationships between the National Association and its member organisations. The website and the *SquashPLUS* magazine have been effective new communication channels.

Rebuilding an organisation is hard work. It's not something journalists want to write about because much of it is "below the line" activity, but there have been significant gains. The surplus represents conservative financial management, but the new logo and livery (thanks to Dave Bassett) repositions Squash New Zealand as a progressive organisation ready to meet the market. I'm pleased, too, when I see \$200,000 in the 1998-99 budget committed to Regional Development. This money, matched dollar-for-dollar by the Districts, represents a major joint-venture partnership and the emerging network of professional Squash Development Officers is a human resource available to help clubs at a local level where problems have still to be overcome.

However, what squash lacks at the moment is a showcase for the sport. There is no "Eden Park" for our game, no nationally acknowledged theatre for squash where our best players (and those from around the world) can be on show, where the imagery is that of a modern, exciting sport, and where there is something special for players, coaches, spectators, sponsors and the media.

Having said that, there have been good results at elite level. Leilani Joyce and Philippa Beams put squash back in the media spotlight with their gold medal at the World Doubles Championship in Hong Kong, and Glen Wilson and Sarah Cook won a bronze medal at the Commonwealth Games in Kuala Lumpur.

At an international level, Susie Simcock has continued to make an outstanding contribution to World Squash. Re-elected unopposed as President of World Squash Federation, she is popular and respected by all the squash nations – that was clear at this year’s Annual General Meeting – and it is Susie’s personal drive which is spearheading the campaign to get squash into the Olympic Games.

In June, however, it was Susan Devoy who made the headlines when she was honoured – at just 34 years of age – as Dame Commander of the New Zealand Order of Merit. It was an outstanding mark of respect, unparalleled in the squash history of this country, but one that was popular with New Zealanders everywhere. The front page of the *New Zealand Herald* said it all: “Dame Susan – Queen of Squash” and the award lifted the spirits of squash people enormously.

Not long afterwards, tragically, the squash family was shocked by the death of Jade Wilson. A gifted player and an exceptional individual, Jade gave us all wonderful memories of a life that was all too short. As a Junior World Champion, Jade underlined for everyone just how special she was a player and Squash New Zealand laments her passing.

Away from the headlines, though, it’s been a year of re-building the foundations of how the game is presented. The example of set by Squash New Zealand in preparing for change invites Districts and Clubs to do the same thing and I’ve been pleased this year to see several Districts re-defining their roles and writing new strategic plans which connect with the national strategic plan, *A Good Tomorrow*. At club level, I have been impressed with the leadership of the Ashburton SRC where Trevor Johnston and his team have confronted and conquered the challenges facing squash. I couldn’t wish for a better example self-help and intelligent management but there are other success stories at Whakatane, Waikite, Wanganui, Otautau and beyond.

I believe, too, that squash has prospered under the direction of David Knowles. In his first full year as Chief Executive he delivered an excellent end-of-year result and his open approach to people in all sectors of the game has been very well received. Vivienne Brumby has carried an exceptional workload and the office has now retrieved much of “the knowledge” of previous years.

While there has been good work carried out at a national level, the destiny of squash still lies in the hands of the clubs. They deliver squash to those who play the game: the club’s front door is the critical threshold where the product meets the customer. If the game is to flourish again, the example set by Squash New Zealand (in acknowledging new leisure trends and investing to grow the game) must convince club administrators to re-examine the way they offer squash in their own communities.

The theme at this year's Annual General Meeting is "Competing in a New Environment". It defines the essential change which all sports face – what was popular and successful in 1978 may no longer excite the imagination of a discerning sport and leisure public. Squash has to ready itself to compete in this new environment and first of all it must accept the need for change.

And if I'm allowed an afterthought, I believe it will be the quality of District leadership which will now help or hinder that process.



**Bronze Medallists, Commonwealth Games, Kuala Lumpur**  
Sarah Cook and Glen Wilson



Report from

## **David Knowles**

Chief Executive  
Squash New Zealand

At an operational level, the 1997-98 year was a productive period of consolidation after the upheavals of the previous year.

### ***Financial Management***

Squash New Zealand completed the year with a healthy surplus of \$206,000. The turnaround was achieved by (a) a continuing policy of conservative management and (b) the further investment by the Executive Council in Club Kelburn which has generated greater profitability, enabling Rob Walker to prove again that there is a market for squash and leisure products. The surplus, though, should not disguise the fact that members of staff at the National Office have worked throughout 1997-98 without adequate back-up and, while the austerity programme has been a necessary phase of the reconstruction, it is not a sustainable option in the longer term.

### ***Staffing***

The National Office has operated on a minimum level of staffing. Paul Wright, Vivienne Brumby and Francis Scordino have coped with the pressures of trying to be “all things to all people” and despite the difficulties have, in their own ways, achieved commendable levels of service to the wider squash community. The proposed appointment of a Manager, High Performance should relieve some of the workload borne by all three members of staff.

In addition to the permanent staff, Lyn Hamon (Finance), Charmian Hayes (Grading List), Steve Burgoyne (Website) and Marisa Rakich (Magazine) have been independent contractors to Squash New Zealand during the year.

### ***Squash Development***

The most important initiative of the 1997-98 year has been the implementation of the strategy to “grow the game.” Increased playing numbers offer the best protection for squash clubs and with financial assistance from Squash New Zealand, Kaye Jackson (Auckland), Mark Devoy (Waikato), Graeme Randolph (Central Districts), Steve Dunbar (Wellington) and Vaughan Utteridge (Southland) were appointed as fulltime Squash Development Officers by their respective Districts.

The dollar-for-dollar subsidy of the SDO positions by the Districts underlines the shared commitment which now exists to “regional development,” the first strategic choice set out in *A Good Tomorrow*. Northland is currently advertising an SDO position and Canterbury and Otago have agreed in principle to make appointments in the new year.



### ***Programme Directors***

Squash New Zealand continues to devolve areas of work to an experienced group of volunteer Programme Directors. In 1997-98 Gower Dallimore, supported by an Advisory Group of Sylvia Wesley, Barry Gardiner and Ray Foster, steered the Masters programme. Joss Urbahn looked after the best interests of Referees, ensuring they derived benefits from the SFRITO funding. Alan Simpson supervised National Events, including the launch of the Grand Prix Series, and Steve Scott masterminded the important Grading & Statistics portfolio. As in previous years, Hank Scott monitored the Junior Youth programme.

### ***Communication & Marketing***

There have been three editions of the SquashPLUS magazine. While it has become a popular magazine, it has also generated income for squash clubs. The first cheque from AMP delivered on the promise made a year ago and produced money for the Henderson, Te Rapa, Feilding and Christchurch clubs. Other clubs can also expect "commission" on purchases by their members of AMP products and services.

The Squash New Zealand website ([www.squashnz.co.nz](http://www.squashnz.co.nz)) has grown in stages and plans are underway to make the Grading List available on the internet in 1998-99. Traffic to the site will increase dramatically as a result.

A new logo and name, thanks to the enthusiasm of Executive Councillor Dave Bassett, have given Squash New Zealand a new look.

### ***National Events***

The Grand Prix Series, while it lacked a sponsor, was a successful innovation. It provided a showcase for domestic squash and though some players complained publicly about the prizemoney, the commercial reality is that neither squash as a sport, nor our top players can currently command the sponsorship everyone would like to see in the game.

The other National Events attracted strong entries in 1997-98, the exception being the New Zealand Doubles Championships. The Graded Teams Finals and Junior National Age Group Championships were very well supported.

### ***High Performance***

There have been excellent performances in 1997-98. Leilani Joyce and Philippa Beams put squash back on the map winning the gold medal at the inaugural World Doubles Championships in Hong Kong, and in Kuala Lumpur Sarah Cook and Glen Wilson won New Zealand's first-ever Commonwealth Games bronze medal for squash. Leilani Joyce's rise continued with a career-best world ranking of 6<sup>th</sup> in November 1998. Though it's sometimes overlooked, our top referees have been active internationally with Chas Evans, Peter Highsted, Gavin Whyte and Sandra Tinkler all officiating overseas at different times during the year.

Paul Wright has worked well under difficult circumstances and made a point of visiting clubs which might never normally see the National Coach and where his "*Paul-Wright-on-the-Night*" has been a popular exhibition. Coming in the wake of the New Zealand Sports Foundation review, the proposed appointment of a Manager: High Performance will in future provide greater support and direction to the Academy programme.

**Thank you**

I would like to thank some people in particular: Rob Walker not only for his contribution to the bottom line in dollar terms but also for his example in marketing Squash; Dave Bassett for his energetic commitment to changing the Squash New Zealand brand; and the other members of the Executive Council who have steered my work this year. In particular I want to acknowledge the work of Chairman, Neven Barbour who, as a volunteer, has worked every day this year for the good of the game.

All in all, it has been a productive year. Susan Devoy became Dame Susan Devoy, an honour which registers the enormous respect of New Zealanders for what Susan has achieved on and off the court. Tragically, it is also the year when squash lost the remarkable Jade Wilson and the redoubtable John Wesney. Despite the difficulties and setbacks of recent times, there are now clear signs that the game is fighting back and that there is more and better to come.



Ashburton Squash Club President Trevor Johnston and Immediate Past President Barb MacGregor toast the club, named New Zealand Squash Club of the Year

## CLUB OF THE YEAR



## FAX MESSAGE

Squash New Zealand

PO Box 21-781  
Henderson, Auckland

Tel: 09 836 2217

Fax: 09 836 0309

Email: [squashnz@squashnz.co.nz](mailto:squashnz@squashnz.co.nz)

Web Site: [www.squashnz.co.nz](http://www.squashnz.co.nz)

TO Greg Billings & Murray Deaker Newstalk ZB  
FROM David Knowles  
RE **ASHBURTON: SQUASH CLUB OF THE YEAR**  
DATE 14 October 1998  
PAGES three

Thanks for your phone message. Please find following a press release about the Ashburton Squash Club winning **The Lion Foundation "Club of the Year"** award. It bullet points some of the club's achievements plus a couple of quotes from yours truly.

The reason I think there's a story in this is that President Trevor Johnston has found a way to manage a club by "repackaging" the work to be done and recruiting the people to do it. He hasn't had to pay salaries or hire professionals! He's defined what the club members want, written job descriptions, set targets and budgets, and then found the people to make "their bit of it" happen. Most clubs can't get volunteers but this guy has got at least *twenty* of them co-ordinating different bits of the club's business.

**And there's the trick: he's made the work of volunteers easier, more productive and more satisfying so they will want to do it again!**

While systems are straight from business (plans, goals, targets etc) he's kept it very simple and I believe that he, himself, is the key to the club's success. He's too modest to say so but Deaker might drag it out of him.

Other squash clubs are now learning from what the Ashburton Squash Club has done in 1998 (and so could other sports clubs) and I'm keen to for Trevor and the club to get national recognition for what they have achieved. I hope Murray can talk to him "on air" this weekend.

If you need anything else by way of background, please ring out.

As a footnote – an important footnote - for the last two years **The Lion Foundation** has generously given \$2,000 to sponsor the award (the money goes directly to the club) and it's been a great way for Squash New Zealand to promote "best practice" to other clubs. Let's face it: sports clubs everywhere are struggling in a tough environment so I'm convinced the success of the Ashburton Squash Club is a genuine "good news" story.

Regards



## ***DAME SUSAN***

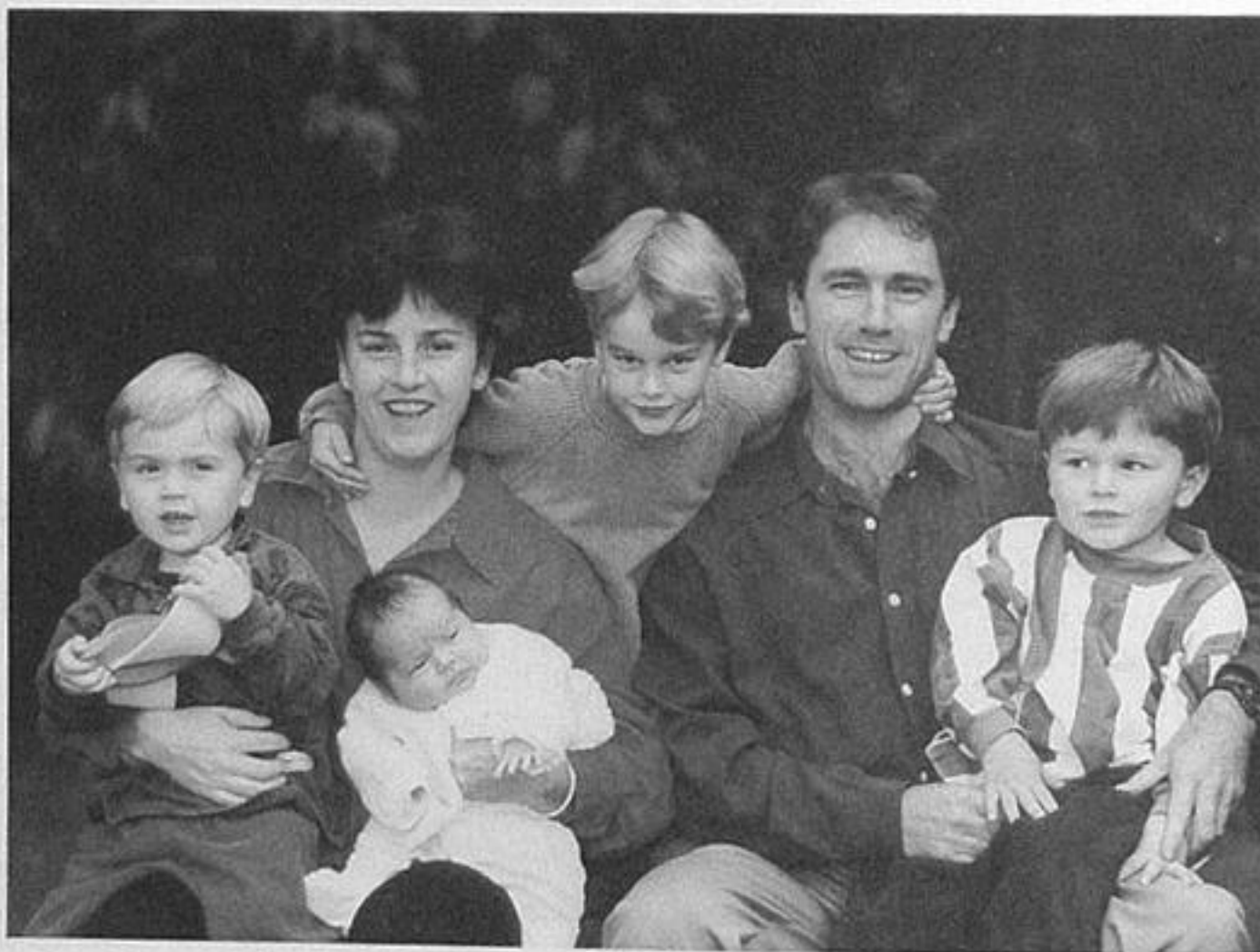
Susan Devoy is a squash icon and she has always been held in special regard by her squash public. However, she has also made a deep impression on New Zealanders generally.

As a result she was awarded the MBE in 1986 and then in 1992 was awarded the CBE.

Now in 1998 Susan has been “knighted” and invested as Dame Commander of the New Zealand Order of Merit. She is Dame Susan Devoy.

The award is the highest mark of respect New Zealand can offer. It recognises her outstanding career as a squash champion, her remarkable “length-of-the-country” walk for Muscular Dystrophy, and, most recently her leadership of the Halberg Trust. It confers, too, a special status on a popular New Zealander who speaks plainly and who has never tired of being active in the community and schools of this country.

### *Dame Susan – Queen of Squash*



Dame Susan and her husband John Oakley, with Joshua, baby Jamie, Julian and Alexander



Tournament Director, NZ National Age Groups, Hamilton – Mark Devoy showing what an easy job it was!!!



**Winner National Women's E Grade Teams – Hawkes Bay**  
Paul Coe (Coach/Manager), Denise Corkery, Jude Craven, Jan Smale,  
Karen Kempton, Pauline Conayne Heather Lewis

## **WORLD SQUASH**

This past year has been tremendously busy in World Squash. Our most important objective continues to focus on the growth of our sport worldwide and happily there are some positive signs indicating that some real progress is being made.

Highlights during 1998 have included...

- A very successful inaugural World Doubles Championships in Hong Kong (complete with a gold medal for New Zealand).
- The tragic and shocking news from Pakistan of the assassination of our much respected WSF Vice President Hassan Musa.
- Strong growth of squash in many countries including first time entries in the World Junior Mens Championship in Princeton from Venezuela, El Salvador, Colombia and Zimbabwe. The Individual event attracted 168 entries from 37 countries and a record 30 nations competed in the Teams event.
- Popular WSF Referees and Coach & Development Conferences were held in Malaysia and Hong Kong.
- 27 countries entering the Commonwealth Games where Squash was a first time participant sport. It was wonderful to see many of the lesser developed squash nations (e.g. Lesotho, Sri Lanka, St Lucia, Dominica, Guyana, Botswana, Trinidad & Tobago, Bahamas, PNG & Barbados & Bermuda) competing at the Games.
- Membership of the WSF has increased to 115 member nations with the inclusion of Guatemala and Venezuela. Communication lines have been established with China, Turkey and Armenia to assist the formation of Squash Associations in those countries.
- Testing of the Two Judge system of refereeing continues. Used throughout the World event in Princeton it was generally preferred to the traditional Referee and Marker system.
- WSF has been working closely with Dunlop to create and test a new range of balls designed to provide a new integrated range which will be suitable for players of all abilities. These balls will be available next year.
- A great deal of effort continues toward having Squash included on the programme of the Olympic Games raising the profile of Squash and expanding our network of people with influence. Mike Corby (WSF Director of Olympic affairs) and I attended the ASOIF & ARISF meetings in Sydney where I was elected Vice President of the Association of Recognised International Federations (ARISF) those 28 sports that are IOC recognised but not on the Olympic programme. Meetings with the 2004 Olympic Organising committee in Athens continues. Attendance to the Annual General Assembly of International Sporting Federation (GAISF) meeting in Monaco next week is another forum for lobbying for the inclusion of Squash in the Olympics.

- The Commonwealth Games provided a great opportunity to showcase Squash. The fabulous state-of-the-art facility built for the games was visited by a constant stream of VIPs. Most significant was the visit by IOC President Juan Antonio Samaranch. He was impressed and instructed the IOC Technical & Television advisors (they were in Lausanne at the time!) to visit the venue, spending considerable time inspecting the one-way viewing, moveable walls, electronic tin and other hi-tec features. Further meetings with the IOC are scheduled with the expectation of knowing whether any new sports will be accepted onto the 2000 Olympic programme by the end of this year.
- WSF Elections for President and three Vice Presidents will be held at the AGM in Stuttgart in November. Anne Smith (Canada), Mike Corby (England), Jahangir Khan (Pakistan), Vijay Gajjar (South Africa), Kayode Roberts (Nigeria) & Andre Nanche (USA) are the candidates standing for Vice Presidents.
- And finally a thought... New Zealanders have been in leadership roles in World Squash since the very beginnings of the formation of a world body. This can only happen if a suitable person attends Annual WSF meetings on a regular basis. I suggest we shouldn't let slip this proud tradition of continuity and leadership end!

**Susie Simcock**  
**President**  
**World Squash Federation**



WSF Emeritus President YAM Tunku Imran who was a major influence in Squash being included on the Commonwealth Games programme in Malaysia

**Squash New Zealand wishes to acknowledge the following sponsors:**



**Dunlop Slazenger**  
**Australasia**

## **MASTERS**

I am pleased to report that Masters Squash is very healthy throughout the country and there have been a number of positive developments and encouraging progress over the last year.

The District Championships are now firmly established. Most districts are now conducting interclub competitions and the corporate sector seems to be showing interest in the highly successful national championships.

The Masters Advisory Group (comprising Sylvia Wesney, Barry Gardiner and Ray Foster) has produced a strategic plan to be embraced by all players involved in Masters Squash. The vision document will plan their path securely into the future to look at what needs to be changed and to identify how the change process can be initiated.

Some ideas incorporated in this plan include:

- (a) Creating a higher profile for the National, North and South Island and District Championships.
- (b) Making the World Team Championships a priority for the Masters programme.
- (c) Continuing the Trans-Tasman Test Series whenever possible.
- (d) Establishing a National Club Teams Championship in 1999, and
- (e) Encouraging the development of Masters Squash in the Oceania region.

The Trans-Tasman Test Series had to be cancelled for the second successive year due to the fact that no suitable date could be arranged. The next series is scheduled for New Zealand in 2000.

At the recent World Masters Games in Portland, Kay Glennie won the W50 title and teamed up with runner-up Kay Jackson to win the bronze medal in the doubles. Lawrence Skurr and Morrie Peters also won bronze in their respective age groups.

It was with great sadness that we received the news of the sudden passing of John Wesney, one of our finest administrators and competitors. John was widely known in Masters Squash as a founding member and played a vital role in its development over the past sixteen seasons. John will be remembered, amongst his other achievements in squash, for his role as Tournament Director of the hugely successful National Championships at Nelson in 1996. Notwithstanding all his past service to the National and Masters scenes, he was always willing to accept any role which he was asked to fulfil, and as "elder statesman" his mature advice coupled with his warm personality and good humour made him a great companion around the Masters scene.

John was one of life's true gentlemen and our sympathy is extended to Sylvia and her family.



In conclusion, I would like to acknowledge the work carried out by my Advisory Committee, and all district convenors who have donated a large amount of time over the last year. It has been greatly appreciated.

Gower Dallimore  
Programme Director  
Masters Squash

### **NEW ZEALAND MASTERS CHAMPIONSHIPS**

Wanganui Squash Club – 24-27 October 1997

Sponsored by Lion Foundation

Tournament Director Alan Simpson

250 entries were received for age groups 35-39 years up to 70 plus for men.

<b>Results</b>	<b>Male</b>	<b>Female</b>
<b>35 - 39</b>	Scott Harrison (Auckland)	Donna Wilson (Wellington)
Runner Up	Paul Viggers (Hawkes Bay)	Jill Torbet (Bay of Plenty)
<b>40 - 44</b>	Barrie Mathews (Canterbury)	Carol Chard (Central Dist)
Runner Up	Steve McCarroll (Canterbury)	Freda Walker (Canterbury)
<b>45 - 49</b>	Laurence Skurr (Canterbury)	Carol Lamb (Bay of Plenty)
Runner Up	Mark Lawrence (Waikato)	Francy Stephenson Wgtn)
<b>50 - 54</b>	Ron Marshall (Canterbury)	Kay Jackson (Auckland)
Runner Up	Graeme Kennan (Central))	Kay Glennie (Hawkes Bay)
<b>55 - 59</b>	Richard Purser (Auckland)	Jenny Webster (Auckland)
Runner Up	Graeme Johnson (Wellington)	Jill Roberts (Wellington)
<b>60 - 64</b>	Eddie Condor (Auckland)	Judy Allen (Auckland)
Runner Up	Barry Gardiner (Canterbury)	Noleen Turnbull (Waikato)
<b>65 - 69</b>	Maurie Peters (Bay of Plenty)	not Played
<b>70+</b>	Ken Turnbull (Waikato)	

### **NEW ZEALAND MASTERS INTER DISTRICT TEAMS EVENT**

Wanganui Squash Club – 28-30 October 1997

Sponsored by Lion Foundation

The Masters Inter-District Teams Event followed the individual championship and results were as follows:

<b>Results</b>	<b>District</b>
<b>1st</b>	Canterbury
<b>2nd</b>	Auckland
<b>3rd</b>	Wellington
<b>4th</b>	Central
<b>5th</b>	Hawkes Bay/Gisborne
<b>6th</b>	Waikato
<b>7th</b>	Bay of Plenty

## **MASTERS**

I am pleased to report that Masters Squash is very healthy throughout the country and there have been a number of positive developments and encouraging progress over the last year.

The District Championships are now firmly established. Most districts are now conducting interclub competitions and the corporate sector seems to be showing interest in the highly successful national championships.

The Masters Advisory Group (comprising Sylvia Wesley, Barry Gardiner and Ray Foster) has produced a strategic plan to be embraced by all players involved in Masters Squash. The vision document will plan their path securely into the future to look at what needs to be changed and to identify how the change process can be initiated.

Some ideas incorporated in this plan include:

- (a) Creating a higher profile for the National, North and South Island and District Championships.
- (b) Making the World Team Championships a priority for the Masters programme.
- (c) Continuing the Trans-Tasman Test Series whenever possible.
- (d) Establishing a National Club Teams Championship in 1999, and
- (e) Encouraging the development of Masters Squash in the Oceania region.

The Trans-Tasman Test Series had to be cancelled for the second successive year due to the fact that no suitable date could be arranged. The next series is scheduled for New Zealand in 2000.

At the recent World Masters Games in Portland, Kay Glennie won the W50 title and teamed up with runner-up Kay Jackson to win the bronze medal in the doubles. Lawrence Skurr and Morrie Peters also won bronze in their respective age groups.

It was with great sadness that we received the news of the sudden passing of John Wesley, one of our finest administrators and competitors. John was widely known in Masters Squash as a founding member and played a vital role in its development over the past sixteen seasons. John will be remembered, amongst his other achievements in squash, for his role as Tournament Director of the hugely successful National Championships at Nelson in 1996. Notwithstanding all his past service to the National and Masters scenes, he was always willing to accept any role which he was asked to fulfil, and as "elder statesman" his mature advice coupled with his warm personality and good humour made him a great companion around the Masters scene.

John was one of life's true gentlemen and our sympathy is extended to Sylvia and her family.

In conclusion, I would like to acknowledge the work carried out by my Advisory Committee, and all district convenors who have donated a large amount of time over the last year. It has been greatly appreciated.

Gower Dallimore  
Programme Director  
Masters Squash

### **NEW ZEALAND MASTERS CHAMPIONSHIPS**

Wanganui Squash Club – 24-27 October 1997

Sponsored by Lion Foundation

Tournament Director Alan Simpson

250 entries were received for age groups 35-39 years up to 70 plus for men.

<b>Results</b>	<b>Male</b>	<b>Female</b>
<b>35 - 39</b>	Scott Harrison (Auckland)	Donna Wilson (Wellington)
Runner Up	Paul Viggers (Hawkes Bay)	Jill Torbet (Bay of Plenty)
<b>40 - 44</b>	Barrie Mathews (Canterbury)	Carol Chard (Central Dist)
Runner Up	Steve McCarroll (Canterbury)	Freda Walker (Canterbury)
<b>45 - 49</b>	Laurence Skurr (Canterbury)	Carol Lamb (Bay of Plenty)
Runner Up	Mark Lawrence (Waikato)	Francy Stephenson Wgtn)
<b>50 - 54</b>	Ron Marshall (Canterbury)	Kay Jackson (Auckland)
Runner Up	Graeme Kennan (Central))	Kay Glennie (Hawkes Bay)
<b>55 - 59</b>	Richard Purser (Auckland)	Jenny Webster (Auckland)
Runner Up	Graeme Johnson (Wellington)	Jill Roberts (Wellington)
<b>60 - 64</b>	Eddie Condor (Auckland)	Judy Allen (Auckland)
Runner Up	Barry Gardiner (Canterbury)	Noleen Turnbull (Waikato)
<b>65 - 69</b>	Maurie Peters (Bay of Plenty)	not Played
<b>70+</b>	Ken Turnbull (Waikato)	

### **NEW ZEALAND MASTERS INTER DISTRICT TEAMS EVENT**

Wanganui Squash Club – 28-30 October 1997

Sponsored by Lion Foundation

The Masters Inter-District Teams Event followed the individual championship and results were as follows:

<b>Results</b>	<b>District</b>
<b>1st</b>	Canterbury
<b>2nd</b>	Auckland
<b>3rd</b>	Wellington
<b>4th</b>	Central
<b>5th</b>	Hawkes Bay/Gisborne
<b>6th</b>	Waikato
<b>7th</b>	Bay of Plenty

## **REFEREEING 1998**

Referees numbers are slowly growing. With three SFRITO courses held this year 52 people were given some grounding in the basics and several have gone on to complete their District Referees badge. Many gained credits towards the New Zealand Qualifications Award, this appears to be the way of the future.

Chas Evans and I attended a Referees School at the Men's World Championships in Kuala Lumpur last November and brought back lots of information. Chas refereed at the Individuals and Teams Event. Chas and Peter Highsted attended the Commonwealth Games as Referees and Gavin Whyte went to the Cathay Pacific Hong Kong Men's Open in late August. These three are highly regarded overseas and they continue to keep New Zealand's name to the fore.

Two workshops have been held this year, one at the Northland Open with seven attending and one at the Central Open with 17 attending. These have been for District and National Referees and more are planned for next year.

National Events – Thanks to those referees who have made themselves available to referee at the various National events this year. It is hoped that we can increase the numbers of referees at the various national tournaments in 1999.

A growing concern is the abuse of our referees by players who think they know the rules. The Wellington Open Interclub used a red and yellow card this year and we will be looking at trialling a similar system next season at an Open tournament.

Gavin Siegel from Wellington qualified as a National Referee Grade two this year.

Thanks to the various District Convenors who have promoted refereeing this year, particularly Kaye Jackson and Sandra Tinkler.

My thanks to Francis Scordino and Vivienne Brumby at the National Office for their continuing help and support and thanks to all the referees who have contributed their services.

**Joss Urbahn**  
**Programme Director**  
**Referees**

### **Referees**

**World:** Chas Evans, Peter Highsted; **International:** Gavin Whyte; **National: Grade 1:** Nigel Lloyd, Pauline Boyle, Gary Hutchison, Barrie Mathews, Michael Allred, Nichol Taylor; **Grade 2:** Maihi Tana, Mathew Tana, Dave Conza, Kaye Jackson, Doug Flint, Peter Robinson, Neven Barbour, Denise Watson, Mark Devoy, Carol Chard, Brian Chard, Richard Coxon, Kevin Housiaux, Sandra Tinkler, Dru Reid, Judy Harrison, Ray Foster, Steve Scott, Paul Sneyd, Wayne Munro, Tim Cook, Kay Gilray, Naeomi Gunn, Mike Irving, Russell McQuarters, Wayne Smith, Freda Walker, Fred Williams, Barry McLachlan, Gavin Siegel.

Squash New Zealand appreciates the contribution of these volunteer referees who are so important in competitive squash.

## ***NATIONAL JUNIOR-YOUTH REPORT 1998***

The junior national development programme initiated by Paul Wright for elite players has become an important cornerstone for junior development across all age levels. At this point in time, we are consolidating the development programme and look forward to districts structuring their programmes so that their top players will get the opportunity to be invited to participate in the National Squads. We are also looking to introduce the U11 Age group into regional and later perhaps into the national development squad.

### ***National/Regional Coaching Programme***

I can report that these camps are not only helping the players but also the coaches so they can become better coaches. The long term future of squash as a sport will continue to improve with the increasing interest in Junior Squash, the success of juniors and the success of our coaches.

I would also add that Districts and clubs in particular should be making every effort to encourage and promote training for their coaches, especially now that the training is free through SFRITO – and will contribute to a nationally recognised certificate. Our junior programme relies on good well-meaning people having the right skills to teach children the game of squash. I see that many are keen but few are getting the right information to get them on track.

### ***U21 development programmes & support***

In the main, this group continues to remain unchallenged from any opportunities that we can offer at this point in time. The very few at the top are fortunate in that there is assistance from the High Performance Board – but outside of that, we have nothing to offer players who are continuing in the game. It is unfortunate but inevitable that the limited resources for the junior programme has to be directed at those with much of their future still ahead of them.

This years U21 event was held in Christchurch and successfully run by the Football club. Shelley Kitchen and George Crosby were the clear winners and definitely a clear hurdle or two ahead of the rest. Despite putting his studies ahead of everything else, George is still doing enough to keep his top placing. These players deserve the help they can get and it's good our HP Board have their best interests in mind.

### ***North & South Island Junior Championships***

Both of these events went off very well and I'm pleased to say that the juniors and the host clubs involved came away with a lot of positive outcomes for both. The attitude of the Tournament committees I came into contact with was quite refreshing. They actually took on the job so they could encourage and promote junior development as well as help their own club. In both situations, we encountered a very professional approach to the running of the events. There is still some concern with the level of billets that the host club has to find. However, that is not as heavy as it used to be and the lower level is really helpful in taking the stress of the host club.

A major problem we are looking to tidy up at the moment concerns the awards and the format in which we present these awards. Suggestions put forward are being evaluated at the moment and hopefully we can start the new season with new guidelines and upgraded awards in place for the final year of the nineteen hundreds.

### **National Age Group & Teams**

Despite the large numbers now attending this event, everything went well in Hamilton with only a few minor glitches. Waikato, despite not winning the Gifford cup was definitely the stand out District with its two teams runner up in both junior men and women's event. Having both teams at that level is a real achievement for any district and like Auckland (winner of the Gifford cup), we also congratulate Waikato for the success of its junior programme.

My own view of our overall standard is that the top junior women's squad has dropped back slightly to be even pegging with the junior men's squad. But we have a much younger squad in both the men and women's age group and the best from their progress and efforts is still to come. Both squads need all the help we can offer and all the overseas experience we can assist them with. I also believe that parents will assist with any costly programme should it come down to that.

Our revised guideline for clubs hosting junior events should deal with all the technical issues and provide firm directions for clubs to follow. The review of trophies and related matters currently in progress should also result in a better award system in place for next season.

### **Secondary Schools Squash**

I was invited onto the committee of this organisation for the 98 season and found an interesting combination of people and situations. The organisation is doing the best it can to promote squash in schools and furthermore is happy to do it without any financial help from Squash New Zealand. Under current management, they should go a long way towards involving more High School students and encouraging new schools to participate in the national tournament. One interesting aspect of this event is that the top players and those aspiring to the top are all members of our development squads. In that respect we already have a very close relationship with the Secondary Schools Squash fraternity.

**Hank Scott**

**Director Junior-Youth Squash**



New Zealand Junior Men's Team – World Championships, Princeton 1998  
Paul Wright (Coach), Phil Andersson, Will Evans, Jared Conning  
Cam Collins, Mark Devoy (Manager)

## **CLUB KELBURN**

1998 has been a fantastic year for those involved with Club Kelburn. The financial return to Squash New Zealand is now extraordinarily high for a small business, not only as a real asset financially, and as a flag bearer for the future.

While court fee revenue from our eleven courts is still the main income earner, and will continue to be, our growth has continued in the other areas of our business. Our gym, with the addition of another gym room (previously the main part of the café) has continued to flourish. At its peak this year we were approaching 1100 members.

Our pro shop business has grown despite a flat market, with sales and profit growth of around 40%. We have achieved this by more aggressive marketing, an increased range of merchandise, and greater floor space given to this area of our business. Squash is no different to the other sports (like golf, hockey and tennis) in that the business is there for the specialist shops to "own" provided the business is well managed.

Our latest area of new business is in tanning, with the addition of a stand-up, state-of-the-art tanning machine, and associated retail products. While we have only made this machine for most of September 98, the results so far are extremely encouraging, and look most likely to aid in our continued growth for the next financial year. This combined with a couple of other initiatives for the next financial year, will continue to develop our position in the Wellington market as an exciting, changing all-purpose leisure club, with a squash "backbone".

My thanks most go firstly to my staff. Mat Williams the gym manager, has done a great job in growing with the business over the last year. Nathan Sneyd, well known as a player in the squash scene, took over from Steve Dunbar in April and is fitting in well and learning the business. Steve Scott continued to be our "Club Committee of One", and helps us at a moment's notice. It is an important mix of great systems, passion, and a happy team.

Thanks also to Neven Barbour, Dave Bassett and Dave Knowles for their support. I have appreciated the good sense of the Executive Council in realising the fact that re-investment into any business is a cornerstone to its ongoing success.

**Rob Walker**  
Manager  
Club Kelburn



Rob Walker, Manager, Club Kelburn

## **GRADINGS & STATISTICS**

The Grading System contains just over 19,000 players and forms part of the National Club Member Register, which also includes a further 7,000 leisure/non-competitive club members.

The past season has seen the continuation of the changes put in place in 1995, which were intended to gradually move to a more even spread of players across the B to F grades.

### **Total Players by Grades (Men & Women combined)**

	Nov. 94		Nov. 95	Nov. 96	Nov. 97	September 98	
A1	20	.1%	24	25	29	26	.1%
A2	118	.6%	131	148	163	199	1.0%
B	877	4.5%	1779	2053	2276	2339	12.2%
C	1448	8.1%	3829	3765	3719	3618	18.8%
D	3234	16.7%	4989	4766	4396	4204	21.9%
E	6242	32.3%	62782	6247	5863	5759	30.0%
F	7297	37.7%	2677	2956	3054	3054	16.0%
	<b>19,346</b>		<b>19,711</b>	<b>19,960</b>	<b>19,500</b>	<b>19,212</b>	

Current player numbers across all grades show that the changes have had the desired effect. The previous "bottom end bulge" with 70% of players in E & F grades, has been substantially reduced and only 46% of players are now in E & F grades.

Also, as was intended, there has been a continued steady increase in B grade numbers and this has had a positive effect in the number of entries for B and C grade tournaments along with increased entries in the B and C grades of the national graded teams event, both at district and national levels.

While the elite status of the A1 has been maintained, there has been a marked increase in the A2 grade as a result of the introduction of automatic progression from B1 to A2, in accordance with the decision of the 1997 AGM. The C, D and E grade numbers have all fallen slightly in comparison to 1997 and it is these grades that have accounted for the fall in total graded player numbers between November 1997 and September 1998.

Current policy is to maintain the even spread of "club" players across the range of E to B2 grades and further, that the "average club player" should be in the C2/D1 grades and not the E/F grades as was the case prior to 1995.

The Grading System continues to be the backbone of competitive squash in New Zealand. The successful operation of the system is due to the considerable input of time and effort by the Club and District statisticians and thanks must be extended to them for their work which benefits individual players and the sport of squash as a whole.

**Steve Scott**  
**Programme Director**  
**Gradings & Statistics**



## ***SFRITO in 1998***

**SFRITO**



SPORT, FITNESS AND RECREATION  
INDUSTRY TRAINING ORGANISATION

In 1998 Squash New Zealand entered into a working partnership with the Sport, Fitness, Recreation Industry Training Organisation (SFRITO). The objective of the partnership is to develop new training programmes that will better educate and inform our referees, coaches, development officers and event managers.

The aim of SFRITO is to set quality standards for the sports industry and for sports organisations, such as Squash New Zealand, to meet those standards.

As trainees work through the new courses, they receive a sport specific qualification (e.g Level 1 Squash) and credits towards a National Certificate in Sport. As they complete each stage of a sport specific qualification, the credits accumulate until a certificate is achieved. It is envisaged that over time, trainees will accumulate enough credits to gain diplomas and degrees in sport.

In 1998 we have seen the development of two new courses aimed at beginner coaches and district referees. Over 180 people will have attended these courses by the end of the year.

A bonus arising from the relationship with SFRITO has been the ability to fully fund the training courses. This has ensured that the courses are free, with accommodation, lunches and shirts provided. More importantly, we have been able to use the best coach and referee educators from around the country to tutor the new courses. Overall, the integration into the new system has been successful. We have held coaching courses in Auckland, Wellington, Dunedin, Invercargill and Hamilton as well as refereeing courses in Auckland, Palmerston North and Wellington.

Earlier in the year we experienced a number of teething problems in launching the new programme. However, with the assistance of Sport Training and Assessment Ltd we have overcome all difficulties and are now delivering new improved courses.

For the future, it is envisaged that all Squash New Zealand courses will become integrated into the new SFRITO system. Already for the new year, we have planned courses for Level 1 coaches, national referees and development officers on top of the level 0 coaching and district refereeing courses which are already established.

There is, however, now some doubt about the SFRITO funding for 1999, the result of policy changes in Wellington, which are beyond our control.

**Francis Scordino**  
Project Manager

## **NATIONAL EVENTS**

### ***The National Coaches View***

This season set a new standard for squash, not only in New Zealand but for all Commonwealth Countries, when it was represented for the very first time in the Games. Squash was certainly on display in Kuala Lumpur with all but a few of the World's top players present it turned out to be a great event at what must be one of the best venues in the World today.

With the New Zealand Olympic Committee setting very tough criteria for entry, New Zealand only had one representative (Leilani Joyce) in the Individual event. Leilani reached the quarter finals where she fought valiantly but lost to Sue Wright (no relation) of England 3/2 and although if asked she would have been less than satisfied with this result she did, however, fulfil the set criteria by finishing in the last 8. Leilani is a very fast attacking player and once she learns to retrieve and defend when necessary she will make the next move upwards in the World Rankings into the top 5.

The remainder of our efforts were concentrated on the Doubles where there were mixed fortunes. Sarah Cook and Glen Wilson combined well and came away with our only medal, a bronze, in the mixed but were close to a silver losing 2/0 to the eventual Gold medalists, Horner and Parke of England, whom they had previously beaten in the Pools.

Joyce and Beams had to battle through the toughest Pool. (Being No. 1 seeds, you would have thought that their path would have been easier). They lost to a very on form South African pair of Nitch and Grainger leaving them second in the pool where they were then matched against Robin Cooper and Rachel Grinham of Australia who just edged them out in a very tight 3 sets. A disappointing result for all from our World Doubles Champions. Both Mens pairs failed to get in the last eight but Glen Wilson and Wayne Werder played extremely well to push eventual silver medalists Rodney Eyles and Byron Davis all the way in one of the best matches of the event.

#### ***Trans Tasman Test Series, Brisbane, May***

The other International events played this season were the Trans Tasman Test Series for the Junior Men played in Australia followed by the World Junior Championships in USA. The team of Phil Andersson, Cam Collins, Jared Conning and Will Evans, achieved a rare win against the Aussies on a points count back in the second Test. Although they lost the series 2/1, they showed a great deal of progress and commitment in pulling off an exciting win against our arch rivals.

#### ***Junior Men's World Championships, Princeton USA, August***

The same side found the going very tough at the World Champs in the USA. It must be said that the depth of Junior talent across the world today is very solid. There are now no easy wins; our men played well and generally gave their best but lacked the much needed overseas experience when small points make the difference.

### ***Grand Prix Series***

This year has seen the introduction of the Grand Prix Series which although not yet perfect gave the top competitive players in New Zealand the chance to focus their efforts on a set series of events. It was with some disappointment that I witnessed arguments between Tournament Organisers and a few elite players over the prize fund; obviously we would all wish that squash attracted similar sponsorship to other more high profile sports but the reality is that the market place dictates the present levels and despite efforts by organisers, Districts and Squash New Zealand, the sport is attracting far less than all of us would wish. However, in my opinion, New Zealand has by far the best domestic tournament in the world today and should be appreciated and looked after. Players are not obliged to enter if the prize fund does not suit but if they enter then they should accept the conditions and help to promote the sport nationally.

### ***Major Junior Events***

On the Junior Tournament scene, I can only thank all Juniors, Parents and Districts for supporting the three major events this season being the North Island Champs in Tauranga, the South Island Champs in Timaru and the National Champs in Hamilton. It was a tremendous commitment by all of you. The National Squad had a full programme and while not yet perfect has generally been well supported by those high achievers who have taken up the invitation to attend.

### ***Regional Coaching Programme***

I thank the Regional Coaches, Mark Devoy, Tony Dye, Graeme Randolph, Barrie Matthews and Vaughan Utteridge for their hard work this season. Despite a variety of difficulties within their Regions, they have taken a great deal of time to ensure that the Regional Squads are worth attending. All have used the opportunity to introduce many other coaches to hands-on coaching within their regions, benefitting all concerned and helping to spread the word faster. The districts within each Region need to help the Regional Coaches to make squash a success by not scheduling events that clash with the advertised dates of Regional Squads. This dilutes the strength of both the squads and the event so if we can all pull together then the squash nation will win.

### ***High Performance Board***

The High Performance Advisory Panel of Dame Susan Devoy, Susie Simcock, Neven Barbour, Robyn Brownlee, David Knowles and myself are currently carrying out a review of the High Performance Programme which I am confident will benefit a number of promising players a great deal.

### ***Rising Stars***

I make no apologies to those players not included in the SquashPLUS article on the Rising Stars of Squash New Zealand. I was asked to choose four only and have done so after much deliberation. I only hope now that those mentioned take on the task and prove me to be accurate but if any others come forward to prove me wrong then I shall still be satisfied. Shelley Kitchen has made the first move and must be congratulated on becoming the Most Improved Woman Player of the Year passing both Fiona Dean and Angie Toal to be selected for the fourth place in the New Zealand Womens Team due (at the time of writing) to represent us at the World Championships in Germany in November.

Chrissie Tana, at 15, wins the U19 National title; Jared Conning at 16 players at number 2 for New Zealand at the World Junior Championships with the possibility of playing the next one in two years time and comfortably took the U17 National title in Hamilton; George Crosby ended the season rather disappointingly losing a couple of matches that he should have won, but I am sure he knows that he now needs to make a decision to concentrate on squash rather than share the time with rugby. To those not included but who feel they should have been, I encourage you to talk with your rackets at major events next season and I shall certainly look forward to seeing the results.

### ***Selectors***

A group of people who tend to get little recognition but have made an enormous contribution this season are the Selectors. Wendy Browne has become very well versed with all Junior form and has been largely responsible for the production of the three Ranking Lists this season. If you take into account the U21, U19, U17, U15, U13 Boys and Girls multiplied by three then she has actually produced 30 Ranking Lists! Jenny Norton and Nigel Lloyd have largely produced the two Senior lists and Ross Titchmarsh has worked extremely hard helping to co-ordinate all of these. Much time has been spent by the selectors at major events watching match after match and making some very critical selections when asked. The phone lines around the country are certainly kept busy right throughout the season and I thank you all for your tremendous enthusiasm and support.

### ***Looking Ahead***

Whilst the season is at a close, the next one is only just around the corner so if you are serious about your game don't put away your racket and shoes but make some ground by training through the summer. Make squash a year round sport, enjoy what you do – it makes the hard work seem easier!

**Paul Wright**  
**National Coach**



Hanna McKenzie, left, and sister Charlotte practise their squash skills at the Invercargill Squash Club

### **NORTH ISLAND CHAMPIONSHIPS**

Sponsored by Lion Foundation  
Manurewa Squash Club, Auckland  
28 June - 1 July 1998

Tournament Director Leanne Harris & Karen Cairney

A total of 132 entries were received for the North Island Championships held at the Manurewa Club in Auckland. Sponsorship was provided by the Lion Foundation and members at the Manurewa Club were able to watch top-class squash being played at their own club.

<b>Results</b>	<b>Male</b>	<b>Female</b>
<b>Winner</b>	Ian Higgins (Browns Bay)	Leilani Joyce (Remuera)
<b>Runner Up</b>	Glen Wilson (Wellington)	Sarah Cook (Christchurch)

### **SOUTH ISLAND CHAMPIONSHIPS**

Ashburton Squash Club  
13-15 June 1997

<b>Results</b>	<b>Male</b>	<b>Female</b>
<b>Winner</b>	Ian Higgins (Browns Bay)	Leilani Joyce (Remuera)
<b>Runner Up</b>	Daniel Sharplin (Midlands)	Sarah Cook (Christchurch)



**Winner National Women's D Grade Teams - Gisborne**  
Matire Kupenga-Wanoa, Mo Osbourne (Coach/Manager), Mere Paenga  
Gina Bradford, Tracey Wanoa, Absent: Del Williams

## **COUSINS SHIELD & MITCHELL CUP COMPETITION**

Henderson Squash Club

18-20 July 1997

This event was hosted for the first time by the Henderson Club. A total of 13 mens teams competed for the Cousins Shield and 10 womens teams for the Mitchell Cup. The standard of play was very high which made the event most enjoyable for both the spectators and competitors.

<b>Results</b>	<b>Male</b>	<b>Female</b>
<b>Winner</b>	Browns Bay Squash Club	Herne Bay/Ponsonby Rackets Club
<b>Runner Up</b>	Mitchell Park Squash Club	Remuera Squash Club

## **NATIONAL GRADED TEAMS ELIMINATION'S**

B Grade - F Grade

31 July - 2 August 1998

The district eliminations for the National Graded Teams Competition took place over the weekend of 31 July - 2 August 1998. Team participation increased by 6% from 408 to 432 teams showing the popularity of this event. The highest team participation was equally shared by C, D and E grades all with 102 entries.

## **NEW ZEALAND NATIONAL CHAMPIONSHIPS**

Henderson Squash Club

14-17 September 1997

Sponsored by Waitakere Licensing Trust

Tournament Director Merv Torrie

The event was played with the open section attracting two 64 set draws and total competitors reaching almost 200.

The players' meeting [which was not well attended] focussed on two main points - the first being dissatisfaction over the automatic promotion into A grade by B1 players who in the opinion of the players did not merit such a grading.

After discussion the meeting recommended that the manual adjustment to this level by the National Statisticians should be re-instated. The second topic discussed in depth was what penalties should be placed on players who enter open draws and withdraw close to the tournament start date because of a better offer elsewhere, or for other "flimsy" excuses.

The players in general were happy with squash in New Zealand.

Results	Male	Female
Winner	Paul Steel (Whakatane)	Leilani Joyce (Remuera)
Runner Up	Daniel Sharplin (Midlands)	Sarah Cook (Christchurch)

**1998 National Champions**



Paul Steel



Leilani Joyce

**NEW ZEALAND INTER DISTRICT TEAMS EVENT**

Henderson Squash Club

18-20 September 1997

Tournament Director Merve Torrie

The Inter District Teams Event was played immediately following the Nationals at Henderson. All districts were represented except Hawkes Bay/Gisborne.

Results	Male	Female
Winner	Auckland	Auckland
Runner Up	Wellington	Waikato



**Winner National Men's B Grade Teams - Geyser City**  
 Grant Utteridge, Paul Bedford, Wayne Reid, Andrew Taylor  
 Brendan Morrison, Scott Devoy, Wayne Shepherd

## NATIONAL GRADED TEAMS CHAMPIONSHIP FINALS

B Grade – Hawkes Bay Squash Club  
 C Grade - Oamaru Squash Club  
 D Grade - Nelson Tennis & Squash Club  
 E Grade - Whangarei Squash & Tennis Club  
 F Grade - Taumaranui Squash Club  
 16-19 September 1998

All clubs reported successful tournaments and stressed the popularity of the graded teams events – statements which are supported by increases in the number of teams participating in the district eliminations.

The public and media profile for these events was not high at national level but the host clubs and participating teams secured extensive coverage at a local level.

Results	Male	Female
B Grade	Geyser City Squash Club	Christchurch Football Squash Club
C Grade	Wanganui Squash Club	Ellerslie Squash Club
D Grade	Gisborne Squash Club	Gisborne Squash Club
E Grade	Remuera Squash Club	Hawkes Bay Squash Club
F Grade	Geyser City Squash Club	Mt Maunganui Squash Club



**Winner National Women's B Grade Teams – Christchurch Football**  
 Mary Turnbull, Ann Harliwich, Rose Gardiner, Sarena Gardiner  
 Sally Moorfield, Freda Walker (Manager), Donna Church



## JUNIOR EVENTS

### WORLD JUNIOR BOYS CHAMPIONSHIP

Princeton — USA

27 July–9 August 1997

The team of Phil Andersson, Jared Conning, Will Evans and Cam Collins represented New Zealand at the first ever World Championships to be held in the U.S.A.

There were no easy matches and the team although finishing only midway at 15<sup>th</sup> worked extremely hard in both the preparation phase and throughout the event. Phil Andersson must be congratulated on his commitment both on and off the court and of showing his leadership skills as Captain.

### NZ JUNIOR OPEN & AGE GROUP CHAMPIONSHIP

Hamilton Squash Club

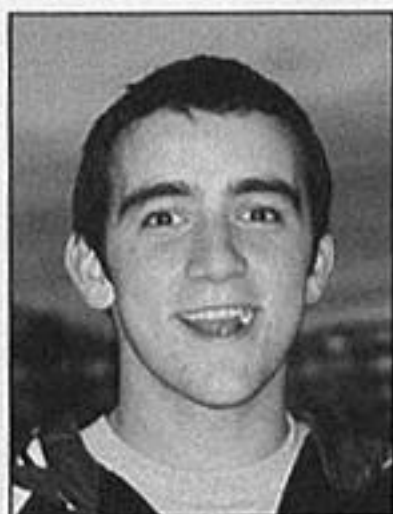
27–28 September 1997

Tournament Director, Mark Devoy

The New Zealand Junior Nationals took place at Hamilton Squash Club, with over 200 entries. It was a popular event very well run by Tournament Director, Mark Devoy

Results	Male	Female
Under 19 Open	Phil Andersson (Hamilton)	Chrissy Tana (Tokoroa)
Under 17	Jared Conning (Titirangi)	Farley Nant (Tauranga)
Under 15	Shaun Sansom (Kawaroa Pk)	Kylie Lindsay (Matamata)
Under 13	Campbell Grayson (Titirangi)	Amy Allison (Waipu)
Under 11	Ryan Peters (Hamilton)	Catherine McLeod (North Shore)

### 1998 National Junior Champions



Phil Andersson



Chrissy Tana

## NEW ZEALAND JUNIOR INTER DISTRICT TEAMS EVENT

Hamilton Squash Club  
29-30 September  
Tournament Director Mark Devoy

The event took place over three days of play with all districts represented except Hawkes Bay/Gisborne and Midlands in the girls' competition.

Results	Male	Female
Winner	Auckland	Bay of Plenty
Runner Up	Waikato	Waikato

## NORTH ISLAND JUNIOR OPEN & AGE GROUP CHAMPIONSHIPS

Tauranga Squash Club  
28-31 March 1997  
Tournament Director Russell Nant

The North Island Junior Open & Age Group Championships took place at Tauranga Squash Club.

Results	Male	Female
Under 19 Open	Phil Anderson (Waikato)	Jenny Gearing (Northland)
Under 17	Greg Small (Waikato)	Chrissy Tana (Tokoroa)
Under 15	Terry Shaw (Bay of Plenty)	Kylie Lindsay (Tauranga)
Under 13	Hayden Manson (Southern)	Rachel McLeod (Auckland)

## SOUTH ISLAND JUNIOR OPEN & AGE GROUPS CHAMPIONSHIPS

Timaru Squash Club  
3-5 July 1998  
Sponsored by Richard Pearce Family Tavern  
Tournament Director Linda Kenny

130 entries were received to the South Island Juniors with a number of North Island juniors attending. The courts of Timaru Old Boys were also used due to the number of round robins which were run to eliminate byes. This seemed to go down well and the players and parents were pleased to play squash rather than miss out on matches.

Following the event a camp for the U19/17, and U17/15 squads was held.

Results	Male	Female
Under 19 Open	Cam Collins (Waikato)	Jenny Englebretsen (Wellington)
Under 17	Greg Small (Waikato)	Chrissy Tana (Bay of Plenty)
Under 15	Shaun Samson (Central)	Tamara Mamana (Bay of Plenty)

**NEW ZEALAND UNDER 21 CHAMPIONSHIPS**  
**Christchurch Football Squash Club**  
**24-26 April 1998**

An excellent U21 entry this year travelled to Christchurch Football Club with all but a few of the top U21 players present. One casualty was Women's title-holder Louise Crome who had to withdraw due to illness. This opened up the space for a new Women's champion in the guise of Shelley Kitchen who is now playing squash fulltime.

The Men's Open saw George Crosby pick up his first title in an excellent match against Nathan Sneyd.

Christchurch Football President Don Robertson and Tournament Organiser Wayne Wood must be thanked for making the tournament a success.

<b>Results</b>	<b>Male</b>	<b>Female</b>
<b>Singles</b>	George Crosby (Chch)	Shelley Kitchen (Herne Bay/Pons)
<b>Runner Up</b>	Nathan Sneyd (Wellington)	Hayley King (Herne Bay/Pons)



**Winner Junior Boys Inter District Teams Event – Auckland**  
 Will Evans, Jared Conning, Callum Cairney, James Vincent,  
 Simon De Witt, Gary Wood (Manager/Coach)

## 1998 AWARDS

Award	Winner
Personality of the Year	Chas Evans
Club of the Year	Ashburton Squash Club
Most Improved Junior Players: Female	Catherine McLeod (North Shore)
Male	Campbell Grayson (Titirangi)
Most Improved Senior Players: Female	Shelley Kitchen (Herne Bay/Ponsonby)
Male	Daniel Sharplin (Midlands)
Mackwell Trophy Best Junior Player	Phil Andersson (Hamilton)
Derek Cooke Memorial Trophy for Refereeing	Sandra Tinkler
Squash Players of the Year (Winners of Grand Prix Series)	Leilani Joyce Glen Wilson



Chas Evans with Bronze Medalists Glen Wilson and Sarah Cook  
Commonwealth Games, Kuala Lumpur

## **JADE WILSON**

This year New Zealand reeled with shock when news broke that one of our brightest young squash talents, Jade Wilson, had taken her own life. The extremely talented 21-year-old had a lot going for her – she was a witty, attractive young woman who had a natural flair for squash.

Her mother, Stephanie Wilson recalls that Jade was “absolute magic” to watch on the court. “She really looked like she belonged there. She had the ability to think on court and change her game, she was very determined and never gave up.”

Jade’s parents, Stephanie and Bruce, knew their daughter was going to be something exceptional from a young age. Bruce recalls a conversation with Stephanie after Jade had scored a goal single-handedly in her first game of soccer at the tender age of five.

“Stephanie said to me, well, Jade is going to represent us, herself, represent New Zealand at something – and she did. She had her ups and downs and had a feisty personality as we all know. Jade had many other talents as anyone who met her would realise...she was bright, creative, she was zany...she just loved people...she was larger than life.”

Family friend Noel Barkley, who knew Jade for five years, aptly describes her as having an “intoxicating personality” that touched everyone who met her.

Jade didn’t hit her first squash ball until she was 11. However, as her friends would say, it was typical of her, that by the age of 15 she had won the New Zealand under 13 and under 15 titles and the Australian under-15 title. In spectacular fashion 1995 proved to be Jade’s year. She won the Scottish Junior Open, the British Junior Open and then the World Junior Open in Sydney, where she faced up to arch-rival and defending champion Rachel Grinham of Australia in the final.

She was out to avenge her semi-final loss to the Australian two years earlier in Malaysia. Her spectacular, gritty performance ensured a straight-set victory, 9/2, 9/4, 9/7. Bruce Wilson says he’ll never forget Jade reassuring him before the final with the words: “Don’t worry dad, I’m just going to do it.”

After such amazing success no-one could have foreseen that shortly before 11pm on May 14, 1998, Jade would take her own life.

Jade was only about a week away from coming home. She had been living in Australia for the past two years but she was planning to join the New Zealand squash squad to train for the Commonwealth Games in Kuala Lumpur.

Barrie Matthews, who coached Wilson to world junior success, says Jade was an exceptional person who loved the game of squash. "She was a highly intelligent person who had this extra sort of factor that other people didn't. She had a vision of the game." World Squash president Susie Simcock says Jade's loss was incredibly tragic. "She was such a fun, bubbly person who was exceptionally talented." However, Matthews says contrary to what people might think he found Jade really easy to deal with as a coach because she was so open and honest. "She had such high expectations for herself. She was always trying to play the perfect game."

Rob Walker, who coached Jade when she was 13, says at tournaments he remembers Stephanie "biting her nails to the bone hoping that the day would go smoothly, that there wouldn't be one of the 'Jade Wilson' explosions – that rackets wouldn't grow wings and fly, and that the water bottle wouldn't pass the speed of sound down the corridor. But that was how Jade was, 100 percent in or 100 percent out. She wasn't a person of half measures. She was bright, funny, sensitive and talented. She was precocious and she was unique."

Dame Susan Devoy recalls a kid of about 13 who used to write to her and tell her she was going to beat her. "When I met her, she was about 14 and I thought she had a lot of spunk. It's quite neat to see a young kid being so ambitious. "She had plenty of talent and get up and go. She gave a lot of life to the sport."

New Zealand Squash chairman Neven Barbour says Jade was an independent, stubborn person who had a great sense of humour. "Even when you got really cross with Jade she always came up with something to make you smile. To the people who knew Jade she will never be forgotten," Barbour says.

She is sorely missed throughout the New Zealand squash community and far beyond.

**Kelly McAra**  
**Journalism Student**  
**Christchurch**



Jade Wilson

**CONSOLIDATED STATEMENT OF FINANCIAL POSITION**  
as at 30th September 1998  
**NEW ZEALAND SQUASH (INC)**

**CONSOLIDATED**

	Notes	1998	1997
<b>Opening Balance as at 1 October</b>		598,800	672,268
Surplus/(Deficit) for the Year		206,340	(72,607)
Prior Year Adjustments		(1,716)	(861)
<b>Total Accumulated Funds</b>		<b>803,424</b>	<b>598,800</b>
<i>Represented by:</i>			
<b>CURRENT ASSETS</b>			
Current Accounts - Westpac Trust		52,513	82,953
On Call Accounts - Westpac Trust		739,764	187,888
Wage Account - Westpac Trust		10,578	5,571
Term Deposit Account - ANZ		5,973	5,149
Accounts Receivable		204,316	84,324
Stock on Hand	1	31,884	26,474
Payments in Advance	7a	29,488	12,576
Cash on Hand (Club Kelburn)		350	310
<b>Total Current Assets</b>		<b>1,074,866</b>	<b>405,245</b>
<b>INVESTMENTS</b>			
Loans to Clubs	6	40,000	45,000
<b>Total Investments</b>		<b>40,000</b>	<b>45,000</b>
<b>FIXED ASSETS</b>			
	1 & 17		
Cost		1,328,904	1,356,463
Less Accumulated Depreciation		(1,047,975)	(995,630)
<b>Total Fixed Assets</b>		<b>280,929</b>	<b>360,833</b>
<b>TOTAL ASSETS</b>		<b>1,395,795</b>	<b>811,078</b>
<b>CURRENT LIABILITIES</b>			
Mastercard Accounts - Westpac Trust		99	150
GST Accruals		21,979	28,459
Accounts Payable		340,660	81,357
PAYE Clearing Account		5,502	7,096
Sundry Accruals	7c	62,683	6,350
Income in Advance	7b	160,730	86,370
Squash Wellington	5	718	-
<b>Total Current Liabilities</b>		<b>592,371</b>	<b>209,782</b>
<b>TERM LIABILITIES</b>			
Motor Trade Finance	4	-	2,496
<b>Total Term Liabilities</b>		<b>-</b>	<b>2,496</b>
<b>TOTAL LIABILITIES</b>		<b>592,371</b>	<b>212,278</b>
<b>NET ASSETS</b>		<b>803,424</b>	<b>598,800</b>

**STATEMENT OF FINANCIAL PERFORMANCE**  
for the year ended 30 September 1998  
**NEW ZEALAND SQUASH (INC)**

	Notes	1998	1997
<b>INCOME</b>			
<b>Levies &amp; Subscriptions</b>			
Affiliation Levies	8	435,344	471,153
Grading Levies	8	21,130	23,799
Associate Memberships	8	6,515	10,740
<b>Total Levies &amp; Subscriptions</b>		<b>462,989</b>	<b>505,692</b>
<b>Grants</b>			
<b>Squash Institute/HPP</b>			
- NZSF Academy/Sport 2000		154,800	112,700
- Hillary Commission -ANZSEP		5,640	5,250
- NZSF - Personal		19,250	15,500
- NZSF - General		80,825	69,430
<b>Total Institute/HPP</b>		<b>260,515</b>	<b>202,880</b>
<b>Other Grants</b>			
- Hillary Commission National Funding		130,000	114,000
- Hillary Commission Women's Pilot		4,000	2,000
- Mitchell Trust		5,307	7,640
- Lion Foundation		6,481	-
- Squash Plus/Magazine		9,049	-
- SFRITO	9	95,222	-
<b>Total Other Grants</b>		<b>250,059</b>	<b>123,640</b>
<b>Sponsorships &amp; Endorsements</b>			
National Events		-	11,000
Other		42,374	24,778
<b>Total Sponsorships &amp; Endorsements</b>		<b>42,374</b>	<b>35,778</b>
<b>Member/Gradings Database</b>			
Club Kelburn	10	130,089	73,129
Programme Recoveries & Discounts		1,438	1,848
Sundry Investments		23,838	12,566
<b>TOTAL INCOME FOR THE YEAR</b>		<b>1,171,705</b>	<b>956,043</b>



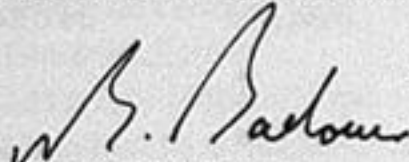
**STATEMENT OF FINANCIAL PERFORMANCE**  
for the year ended 30 September 1998  
**NEW ZEALAND SQUASH (INC)**

	Notes	1998	1997
<b>EXPENDITURE</b>			
<b>Management &amp; Operations</b>			
Salaries, Contracts & Overheads		236,582	247,987
Meetings & Others		30,000	64,545
Abnormal Items	16	43,705	29,309
<b>Total Management &amp; Operations</b>		<b>310,287</b>	<b>341,841</b>
<b>Others</b>			
Sponsorships & Grants to Districts	11	146,124	1,000
Marketing & Publicity		34,715	13,108
Club 2000		-	127,053
Member Database & Communications		3,325	1,055
International - Membership & Meetings		8,697	12,390
National Events		13,263	75,726
Junior/Youth		7,311	11,166
Masters Squash		2,420	5,648
Refereeing		6,747	6,090
Gradings & Rankings		43,259	46,419
Education & Development		21,366	65,849
SFRITO		94,881	-
High Performance Programme		256,259	296,146
<b>Total Others</b>		<b>638,367</b>	<b>661,650</b>
<b>Total Expenses</b>		<b>948,654</b>	<b>1,003,491</b>
Depreciation		16,711	25,159
<b>Total Expenses (after Depreciation)</b>		<b>965,365</b>	<b>1,028,650</b>
<b>NET SURPLUS/(DEFICIT) FOR THE YEAR</b>		<b>206,340</b>	<b>(72,607)</b>

**NOTES TO THE FINANCIAL ACCOUNTS**  
for the year ending 30 September 1998

**Statement of Responsibility**

As Chairman and Chief Executive Officer of New Zealand Squash (Inc), we accept responsibility for the preparation of these financial statements. The statements have been prepared in accordance with generally accepted accounting practices. As part of the Association's financial management systems, effective controls have been implemented and maintained to provide reasonable assurance as to the integrity and reliability of financial reporting. We are satisfied that these financial statements fairly reflect the financial position and operation of the Association for the reporting period.

  
**NEVEN BARBOUR**  
Chairman

  
**DAVID KNOWLES**  
Chief Executive

**1 - ACCOUNTING POLICIES**

---

**Statement of Accounting Policies**

**Differential Reporting**

New Zealand Squash (Inc) is the New Zealand national sporting organisation responsible for the control, advancement and regulation of the game of squash throughout New Zealand. New Zealand Squash (Inc) is incorporated under the Incorporated Societies Act 1908.

The Association qualifies for differential reporting as it is not publicly accountable and does not qualify as "large", as defined within the Institute of Chartered Accountants of New Zealand's framework for differential reporting. The entity has taken advantage of all the differential reporting exemptions available to it.

**Measurement Base**

The accounting principles recognised as appropriate for the measurement and reporting of earnings and financial position on an historical cost basis have been followed. Accrual accounting is used to match income and expenditure.

**Specific Accounting Policies**

The following specific accounting policies which materially affect the measurement of financial performance, and of financial position have been applied:

**Operating Leases**

Operating lease payments, where the lessors effectively retain substantially all the risks and benefits of ownership of the leased items, are included in the determination of operating profit in equal installments over the term of the lease (refer Note 3).

### Finance Leases

The Association leases certain office equipment. Finance leases, which effectively transfer to the entity substantially all the risks and benefits incidental to ownership over the lease term, are capitalised at the present value of the minimum lease payments. The lease assets and corresponding liabilities are disclosed and the leased assets are depreciated using the maximum rates permitted by the Income Tax Act 1994 (refer Note 4).

### Stock

Stock has been valued at the lower of cost or net realisable value. Due allowance has been made for slow moving stock.

### Goods & Services Tax

The financial statements have been prepared on a GST exclusive basis.

### Fixed Assets

All fixed assets are recorded at cost less accumulated depreciation to date. Depreciation has been provided at the maximum rates permitted by the Income Tax Act 1994.

### Investments

Investments are loans advanced to clubs for renovations and development and are stated at cost.

### Changes in Accounting Policies

There have been no changes in accounting policies. All policies have been applied on a basis consistent with those used in previous years.

### 2 - INVENTORY COMMITMENTS

---

No inventories are specifically and separately pledged as security for liabilities. Inventory is subject to retention of title clauses.

### 3 - CAPITAL & LEASE COMMITMENTS

---

		1998	1997
<b>Capital Commitments</b>			
There is no capital expenditure contracted for at Balance Date			
<b>Operating Lease Commitments</b> (Under a non-cancellable operating lease)			
<b>Current</b>	NZ Squash	40,317	40,485
	Club Kelburn	25,000	25,000
<b>Non-current</b>	NZ Squash	66,684	45,892
	Club Kelburn	145,833	170,833

**National Office - Level 1/1 Trading Place, Henderson**

The current lease is for a term of two years, commencing on 22 September 1998 with a two year right of renewal. The rent for the premises is \$23,415 per annum plus GST.

**Equipment**

**Photocopier - U-Bix Business Machines**

The Ose Photocopier is leased under a rental and service agreement. The period of the agreement is for five years commencing 17 July 1996. Monthly payments are \$1,311.17 plus GST. Ownership of the machine is retained by U-Bix.

**Facsimile - Blue Star Finance Limited**

The facsimile is leased from Blue Star for a period of three years commencing 19 June 1996. Monthly payments are \$146.00 plus GST. Ownership of the machine remains vested with Blue Star Finance Limited.

**Club Kelburn - Leasehold Land - Salamanca Road, Kelburn, Wellington**

The ground lease is for a term of 10 years commencing 1 August 1995 and expiring on 31 July 2005. The rent for the ground lease is \$25,000 per annum plus GST.

**4 - FINANCE LEASES**

---

As at balance date New Zealand Squash had no outstanding finance leases.

**5 - SQUASH WELLINGTON - \$718**

---

Funds held in trust for Wellington Squash Association. Deposit for perspex micro-court.

**6 - INVESTMENTS - \$40,000**

---

**Christchurch Squash Club (Inc) - \$20,000**

Advancement Date (new terms):	13 September 1995
Terms:	Five years, interest only in year one
Repayment Date:	13 August 2000
Interest Rate:	9% per annum, reviewable annually
Security:	The advance is secured by a mortgage over the property at 182 Chester St East, Christchurch

**Herne Bay Ponsonby Rackets Club (Inc) - \$20,000**

Advancement Date:	12 June 1996
Term:	Five years
Repayment Date:	12 June 2001
Interest Rate:	10% per annum, reviewable annually
Principal Repayments:	Five equal installments of \$5,000
Security:	The advance is covered by an "Instrument by way of security" dated 7 August 1996

## **7 - ACCRUALS & PROVISIONS**

---

**a. Payments in Advance - \$29,488**

Womens World Champs - Germany	20,270
Club Kelburn - AMP Insurance	7,510
Club Kelburn - One months rental	1,708
	<b>29,488</b>

**b. Income in Advance - \$160,730**

Hillary Commission Funding	20,000
N Z Sports Foundation - International Travel & Coaching	63,730
N Z Sports Foundation - Travel & Training Grants	18,000
SFRITO	59,000
	<b>160,730</b>

**c. Sundry Accruals - \$62,683**

Squash Development Grants to Districts	40,000
Professional Development – Squash Development Officers	17,000
Club Kelburn - One months rental from Café operations	433
Club Kelburn - Provision for increased rental (14 months)	5,250
	<b>62,683</b>

## **8 - LEVIES & SUBSCRIPTIONS - \$462,989**

---

The following is an analysis of the 1998 Affiliation Levies:

- a. Affiliation levy income for 1998 was calculated on an SEM rate of \$26 plus GST
- b. The breakout of affiliation levies and subscriptions is as follows:

Affiliation Levies	435,344
Grading Levies	21,130
Associate Memberships	6,515
	<b>462,989</b>

## **9 – SFRITO**

---

Contract for service to train coaches and referees on a national basis. Funding is received for a calendar year, the portion to be expended in 1999 has been allocated to income received in advance.

## **10 - CLUB KELBURN SURPLUS - \$130,089**

---

The following is a summarised Statement of Financial Performance for Club Kelburn for the year ended 30 September 1997:

	1998	1997
<b>Income:</b>		
Trading Profits	94,891	74,078
Court Fees	226,326	230,781
Gear Hire	10,222	10,408

Gym, Aerobics, Sauna & Sunbed	159,686	102,903
Restaurant Rental	5,200	5,200
Sponsorship & Promotion	8,228	7,755
Interest Received	8,989	2,416
Other Income	4,033	3,730
<b>Total Income</b>	<b>517,575</b>	<b>437,271</b>
<i>less</i>		
<b>Expenditure:</b>		
Insurance	7,616	9,062
Bank Fees & Interest	3,629	1,300
Power & utilities	28,971	31,451
Rent & Rates	24,935	24,755
Repairs & Maintenance	11,682	13,704
Depreciation	83,521	77,663
Management & Sundry	227,132	206,207
<b>Total Expenditure:</b>	<b>387,486</b>	<b>364,142</b>
<b>Net Surplus</b>	<b>130,089</b>	<b>73,129</b>

#### **11 - GRANTS TO DISTRICTS - \$146,124**

---

Development grants paid to districts under signed contracts. Funds provided for in 1998 but not paid out, have been carried forward to 1999.

#### **12 - OFFICE LEASE, RATES AND POWER**

---

The cost for these overheads is shared between Management & Operations, SFRITO/Education & Development, and High Performance Programmes.

#### **13 - PHOTOCOPIER LEASE - \$15,470**

---

This cost is shared between Management & Operations, Gradings, SFRITO/Education & Development, National Events and High Performance Programmes.

#### **14 - INSURANCE AND ACC LEVIES - \$7,865**

---

This figure includes ACC levies for all wages and salaries accounted for in the 1998 financial year.

#### **15 - FRINGE BENEFIT TAX - \$4,328**

---

FBT is paid on the motor vehicle provided to the National Coach together with family medical insurance paid by NZS as part of the employment contract.

#### **16 - ABNORMAL ITEMS - \$43,705**

---

Fixed assets scrapped or written off in 1998 (perspex court & accessories)	41,905
Loss on sale of fixed assets (sale of Nissan Pulsar & accessories)	1,800
	<b>43,705</b>

## 17 - FIXED ASSET & DEPRECIATION SCHEDULE (Consolidated)

---

The following is a consolidated listing of fixed assets and depreciation for NZ Squash and Club Kelburn for the year ended 30 September 1998.

Asset Description	Cost	Opening Book Value	Additions Disposals	Value pre Depn	Depn	Accum Depn	Closing Book Value
Trophies	500	500	0	500	0	0	500
Motor Vehicles	44,174	24,989	(7,752)	17,237	3,315	30,252	13,922
Plant, Equip & Fittings	207,940	69,983	13,283	83,266	16,240	140,914	67,026
Computer Software	1,000	0	1,000	1,000	160	160	840
Sports Equipment	109,085	24,073	46,331	70,404	21,889	60,570	48,515
Perspex Court	158,175	46,561	(41,905)	4,656	4,656	158,175	0
Buildings	650,402	111,922	0	111,922	32,520	571,000	79,402
Leasehold Improvements	157,628	82,805	9,371	92,176	21,452	86,904	70,724
<b>Total</b>	<b>1,328,904</b>	<b>360,833</b>	<b>20,328</b>	<b>381,161</b>	<b>100,232</b>	<b>1,047,975</b>	<b>280,929</b>

## 18 - CHANGE OF TRADING NAME

---

During September 1998 the trading name of New Zealand Squash (Inc) was changed to Squash New Zealand. The association's name, as registered with the Company's Office, and under the Incorporated Societies Act 1908, however, remains New Zealand Squash (Inc).

## 19 - YEAR 2000 COMPLIANCY

---

N Z Squash has assessed its requirements to ensure all hardware and software systems are Y2K compliant. To this end, the Association has budgeted to spend \$15,000 (excluding GST) early in the new year to ensure the accounting systems will comply and a further \$5,000 - \$10,000 to upgrade the remaining systems by the end of the 1999 financial year.

## 20 - ADDITIONAL DISCLOSURES

---

N Z Squash (Inc) has been advised that a personal grievance claim has been lodged with the disputes tribunal. At the time of finalisation of the financial statements, New Zealand Squash Management had not been advised of the details or the amount of the claim. The claim was scheduled to be heard by the Tribunal in 1998. However, as the claimant did not appear on the day of the hearing, the case has been re-scheduled for February 1999.

## AUDIT REPORT

To the readers of the financial report of New Zealand Squash (Inc).

We have audited the financial reports as presented. The financial report provides information about the past financial performance of New Zealand Squash (Inc) and its financial position as at 30 September 1998. This information is stated in accordance with the accounting policies as set out.

### Squash New Zealand (Inc) Responsibilities

The Executive Council is responsible for the preparation of the financial report which fairly reflects the financial position of the Association as at 30 September 1998 and of the results of operations for the year ended 30 September 1998.

### Auditor's Responsibilities

It is our responsibility to express an independent opinion on the financial report presented by the Executive Council and report our opinion to you.

### Basis of Opinion

An audit includes examining, on a test basis, evidence relevant to the amounts and disclosures in the financial report. It also includes assessing:

1. the significant estimates and judgments made by the Executive Council in the preparation of the financial report, and
2. whether the accounting policies are appropriate to the Association's circumstances, consistently applied and adequately disclosed.

We conducted our audit in accordance with generally accepted auditing standards in New Zealand except where our work was limited as explained below. We planned and performed our audit so as to obtain all the information and explanations which we considered necessary in order to provide us with sufficient evidence to give reasonable assurance that the financial report is free from material misstatements, whether caused by fraud or error. In forming our opinion we also evaluated the overall adequacy of the presentation of the information in the financial report.

Other than in our capacity as auditors we have no relationship with or interest in the Association.

### Qualified Opinion

Control over cash sales for Club Kelburn prior to being recorded is limited. There was no system of control over such sales on which we could rely for the purpose of our audit and there were no satisfactory audit procedures that we could adopt to confirm independently that all cash sales were properly reconciled. In this respect alone we have not obtained all the information and explanation that we have required.

In our opinion, except for the adjustments that might have been found necessary had we been able to obtain sufficient evidence concerning cash sales, the financial report of Club Kelburn fairly reflects the results of the operations for the year ended 30 September 1998.

In our opinion the financial report fairly reflects the financial position of New Zealand Squash (Inc) as at 30 September 1998. Our audit report was completed on 9 November 1998 and our qualified opinion is expressed as at that date.

*McGregor Bailey & Co*

9 November 1998





